



## UK Office

### Everest Biotech Ltd

Cherwell Innovation Centre  
77 Heyford Park  
Upper Heyford  
Oxfordshire  
OX25 5HD  
UK

Enquiries:

[info@everestbiotech.com](mailto:info@everestbiotech.com)

Sales:

[sales@everestbiotech.com](mailto:sales@everestbiotech.com)

Tech support:

[support@everestbiotech.com](mailto:support@everestbiotech.com)

Tel: +44 (0)1869 238326

Fax: +44 (0)1869 238327

## US Office

### Everest Biotech c/o Abcore

405 Maple Street, Suite A106  
Ramona,  
CA 92065  
USA

Inquiries:

[info@everestbiotech.com](mailto:info@everestbiotech.com)

Sales:

[usasales@everestbiotech.com](mailto:usasales@everestbiotech.com)

Tech support:

[support@everestbiotech.com](mailto:support@everestbiotech.com)

Tel: 888-320-4628 (toll-free)

Fax: 888-841-9041

[www.everestbiotech.com](http://www.everestbiotech.com)

**Research Use Only. Not for  
diagnostic or therapeutic use.**

## EB05510 - Goat Anti-Thioredoxin Reductase 1 Antibody

Size: 100µg specific antibody in 200µl



### Target Protein

**Principal Names:** TXNRD1, thioredoxin reductase 1, TR1, TXNR, GRIM-12, MGC9145, TR, TRXR1, KM-102-derived reductase-like factor, oxidoreductase, thioredoxin reductase GRIM-12

**Official Symbol:** TXNRD1

**Accession Number(s):** NP\_003321.2; NP\_877393.1; NP\_877419.1; NP\_877420.1; NP\_001087240.1

**Human GeneID(s):** [7296](#)

**Important Comments:** This antibody is expected to recognise reported isoform 1 (NP\_003321.2), isoform 2 (NP\_877393.1; NP\_877419.1; NP\_877420.1) and isoform 3 (NP\_001087240.1)

### Immunogen

Peptide with sequence TKRSGASILQAGC, from the C Terminus of the protein sequence according to NP\_003321.2; NP\_877393.1; NP\_877419.1; NP\_877420.1; NP\_001087240.1.

Please note the [peptide](#) is available for sale.

### Purification and Storage

Purified from goat serum by ammonium sulphate precipitation followed by antigen affinity chromatography using the immunizing peptide.

Supplied at 0.5 mg/ml in Tris saline, 0.02% sodium azide, pH7.3 with 0.5% bovine serum albumin.

Aliquot and store at -20°C. Minimize freezing and thawing.

### Applications Tested

**Peptide ELISA:** antibody detection limit dilution 1:32000.

**Western blot:** Approx 60kDa band observed in Human Placenta lysates (predicted MW of 57kDa according to NP\_003321). Recommended for use at 0.1-1µg/ml.

**IHC:** Paraffin embedded Human Testis and Spleen. Recommended concentration: 2.5µg/ml.

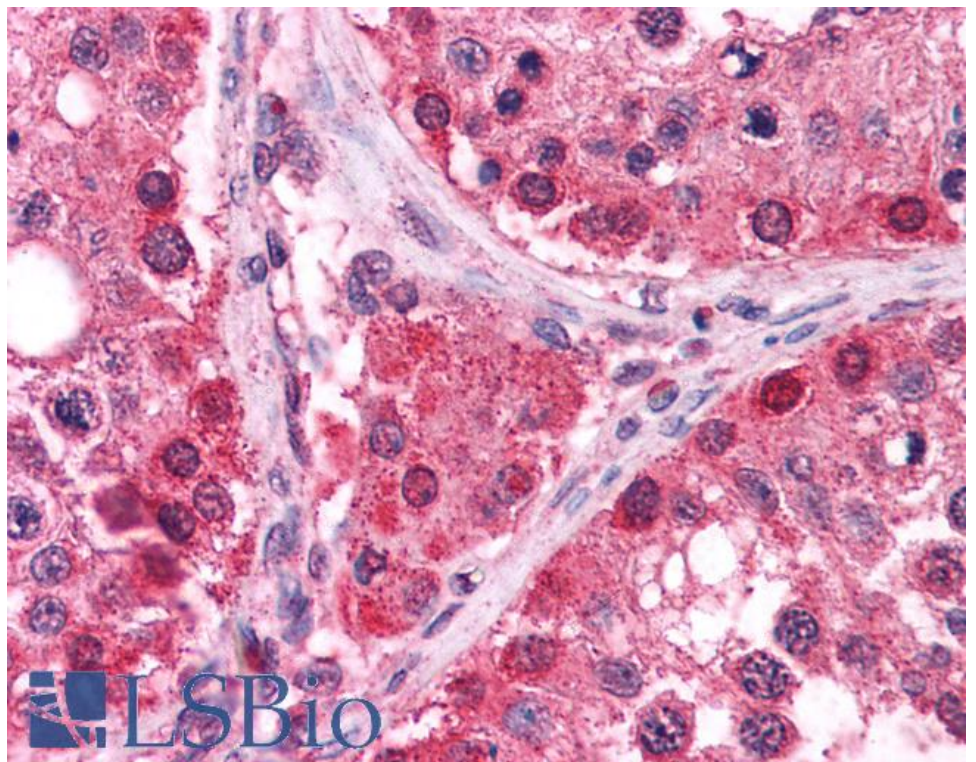
### Species Reactivity

**Tested:** Human

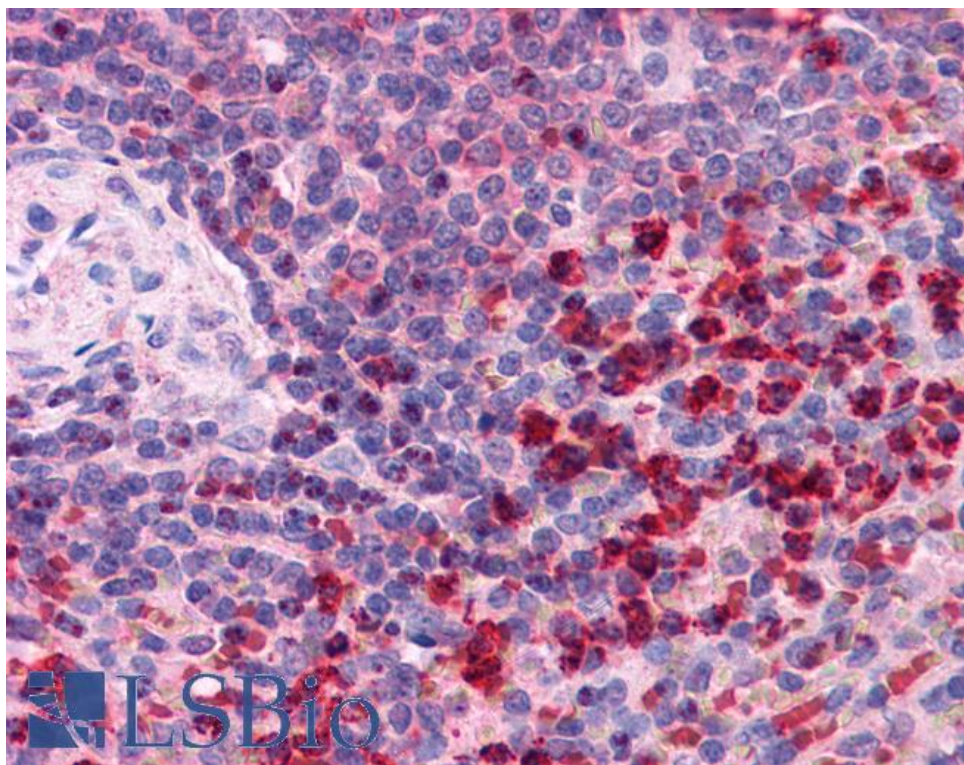
**Expected from sequence similarity:** Human



EB05510 staining (0.1 $\mu$ g/ml) of Human Placenta lysate (RIPA buffer, 35 $\mu$ g total protein per lane). Primary incubated for 1 hour. Detected by chemiluminescence.



EB05510 (2.5 $\mu$ g/ml) staining of paraffin embedded Human Testis. Steamed antigen retrieval with citrate buffer pH 6, AP-staining.



EB05510 (2.5µg/ml) staining of paraffin embedded Human Spleen. Steamed antigen retrieval with citrate buffer pH 6, AP-staining.