



International Office

Everest Biotech Ltd

Vector Laboratories, Inc.
6737 Mowry Ave
Newark, CA 94560
United States

Customer Service:

customerservice@vectorlabs.com

Technical Service:

technical@vectorlabs.com

Tel: +1 (800) 227-6666

www.everestbiotech.com

**Research Use Only. Not for
diagnostic or therapeutic use.**

EB11889 - Goat Anti-THNSL2 (aa192-204) Antibody

Size: 100µg specific antibody in 200µl



Target Protein

Principal Names:

Official Symbol: THNSL2

Accession Number(s): NP_060741.3; NP_001231605.1; NP_001231607.1

Human GeneID(s): [55258](#)

Important Comments: This antibody is expected to recognize all reported isoforms (NP_060741.3; NP_001231605.1; NP_001231607.1).

Immunogen

Peptide with sequence C-EGNSDELDEPIKT, from the internal region of the protein sequence according to NP_060741.3; NP_001231605.1; NP_001231607.1.

Please note the [peptide](#) is available for sale.

Purification and Storage

Purified from goat serum by ammonium sulphate precipitation followed by antigen affinity chromatography using the immunizing peptide.

Supplied at 0.5 mg/ml in Tris saline, 0.02% sodium azide, pH7.3 with 0.5% bovine serum albumin.

Aliquot and store at -20°C. Minimize freezing and thawing.

Applications Tested

Peptide ELISA: antibody detection limit dilution 1:128000.

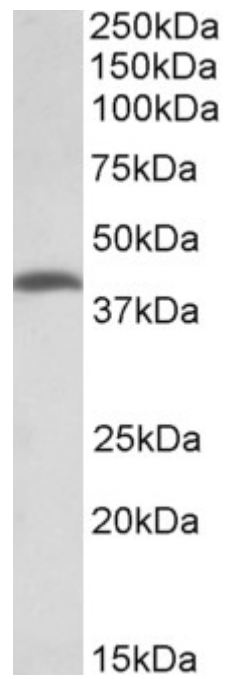
Western blot: Approx 40kDa band observed in Human Colorectal cancer lysates (calculated MW of 45.0kDa according to NP_001231605.1). Recommended concentration: 1-3µg/ml. Primary incubation was 1 hour.

IHC: Paraffin embedded Human Skeletal Muscle. Recommended concentration: 5µg/ml.

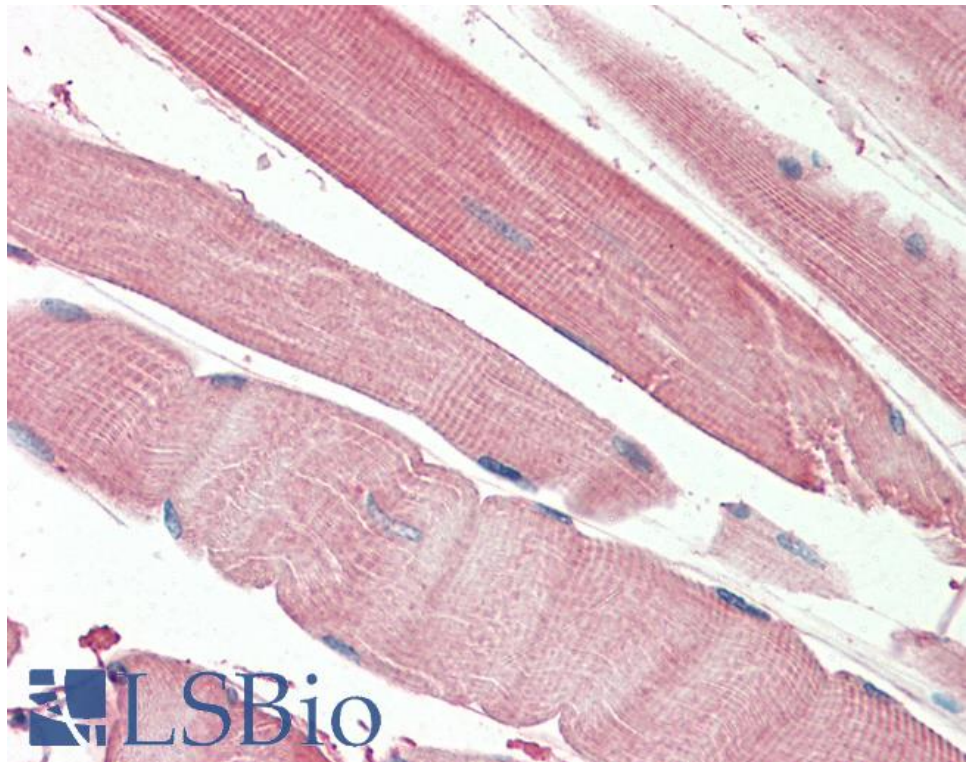
Species Reactivity

Tested: Human

Expected from sequence similarity: Human, Cow



EB11889 (2 μ g/ml) staining of Human Colorectal Cancer lysate (35 μ g protein in RIPA buffer). Detected by chemiluminescence.



EB11889 (5 μ g/ml) staining of paraffin embedded Human Skeletal Muscle. Steamed antigen retrieval with citrate buffer pH 6, AP-staining.