

## UK Office

### Everest Biotech Ltd

Cherwell Innovation Centre  
77 Heyford Park  
Upper Heyford  
Oxfordshire  
OX25 5HD  
UK

Enquiries:

[info@everestbiotech.com](mailto:info@everestbiotech.com)

Sales:

[sales@everestbiotech.com](mailto:sales@everestbiotech.com)

Tech support:

[support@everestbiotech.com](mailto:support@everestbiotech.com)

Tel: +44 (0)1869 238326

[www.everestbiotech.com](http://www.everestbiotech.com)

**Research Use Only. Not for  
diagnostic or therapeutic use.**

## EB07965 - Goat Anti-THRA Antibody

Size: 100µg specific antibody in 200µl



### Target Protein

**Principal Names:** THRA, thyroid hormone receptor, alpha (erythroblastic leukemia viral (v-erb-a) oncogene homolog, avian), AR7, EAR7, ERB-T-1, ERBA, ERBA1, MGC000261, MGC43240, NR1A1, THRA1, THRA2, c-ERBA-1, ERBA-related 7, avian erythroblastic leukemia viral (v-erb-a) oncogene homolog, thyroid hormone receptor, alpha, triiodothyronine receptor

**Official Symbol:** THRA

**Accession Number(s):** NP\_955366.1; NP\_003241.2

**Human GeneID(s):** [7067](#)

**Non-Human GeneID(s):** 21833 (mouse), 81812 (rat)

**Important Comments:** This antibody is expected to recognize both reported isoforms (NP\_955366.1; NP\_003241.2). This antibody is not expected to cross-react to THRB.

### Immunogen

Peptide with sequence C-KEEMIRSLQGRP, from the internal region of the protein sequence according to NP\_955366.1; NP\_003241.2.

Please note the [peptide](#) is available for sale.

### Purification and Storage

Purified from goat serum by ammonium sulphate precipitation followed by antigen affinity chromatography using the immunizing peptide.

Supplied at 0.5 mg/ml in Tris saline, 0.02% sodium azide, pH7.3 with 0.5% bovine serum albumin.

Aliquot and store at -20°C. Minimize freezing and thawing.

### Applications Tested

**Peptide ELISA:** antibody detection limit dilution 1:32000.

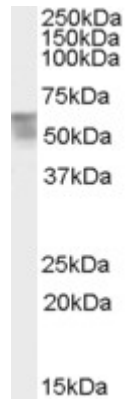
**Western blot:** Approx 60+50kDa bands observed in Human Bone Marrow lysates (calculated MW of 54.8kDa according to NP\_003241.2 and of 46.8kDa according to NP\_955366.1). Recommended concentration: 0.5-1µg/ml. Primary incubation was 1 hour.

**IHC:** Paraffin embedded Human Tonsil and Breast. Recommended concentration: 3.75µg/ml.

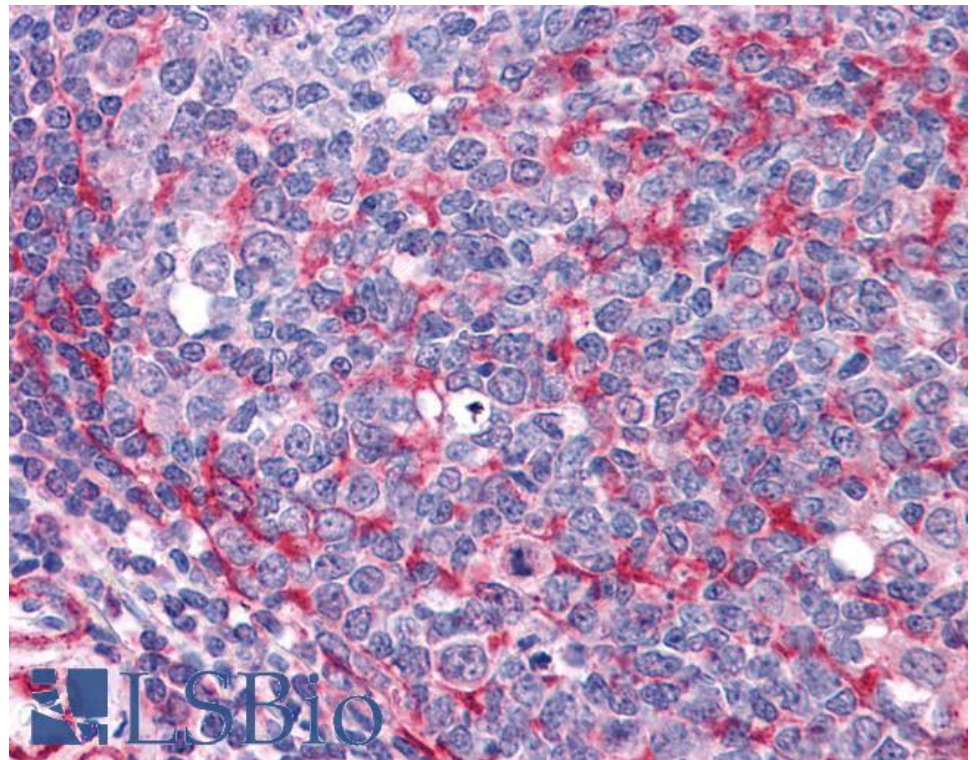
### Species Reactivity

**Tested:** Human

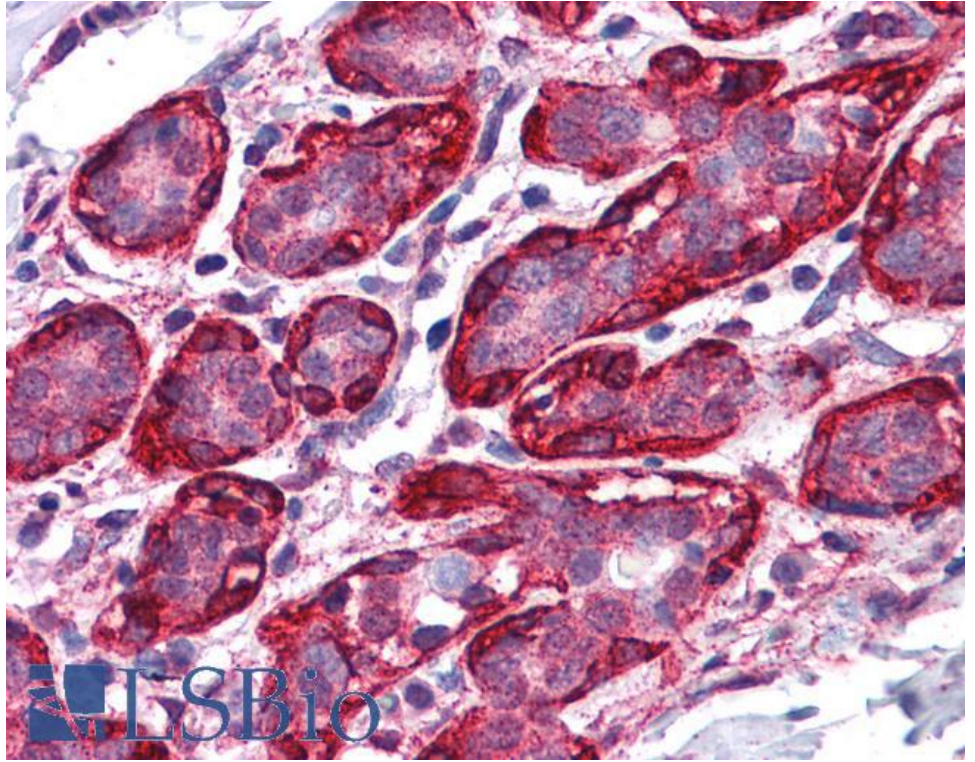
**Expected from sequence similarity:** Human, Mouse, Rat, Dog, Pig, Cow



EB07965 (0.5 $\mu$ g/ml) staining of Human Bone Marrow lysate (35 $\mu$ g protein in RIPA buffer). Detected by chemiluminescence.



EB07965 (3.75 $\mu$ g/ml) staining of paraffin embedded Human Tonsil. Steamed antigen retrieval with citrate buffer pH 6, AP-staining.



EB07965 (3.75µg/ml) staining of paraffin embedded Human Breast. Steamed antigen retrieval with citrate buffer pH 6, AP-staining.