

## UK Office

### Everest Biotech Ltd

Cherwell Innovation Centre  
77 Heyford Park  
Upper Heyford  
Oxfordshire  
OX25 5HD  
UK

Enquiries:

[info@everestbiotech.com](mailto:info@everestbiotech.com)

Sales:

[sales@everestbiotech.com](mailto:sales@everestbiotech.com)

Tech support:

[support@everestbiotech.com](mailto:support@everestbiotech.com)

Tel: +44 (0)1869 238326

[www.everestbiotech.com](http://www.everestbiotech.com)

**Research Use Only. Not for  
diagnostic or therapeutic use.**

## EB08015 - Goat Anti-THRAP4 / MED24 Antibody

Size: 100µg specific antibody in 200µl



### Target Protein

**Principal Names:** THRAP4, MED24, thyroid hormone receptor associated protein 4, ARC100, DRIP100, KIAA0130, MGC8748, TRAP100, activator-recruited cofactor 100 kDa component, mediator of RNA polymerase II transcription, subunit 24 homolog, thyroid hormone receptor-associate

**Official Symbol:** MED24

**Accession Number(s):** NP\_055630.2; NP\_001072986.1

**Human GeneID(s):** [9862](#)

**Non-Human GeneID(s):** 23989 (mouse), 619436 (rat)

**Important Comments:** This antibody is expected to recognise both reported isoforms (NP\_055630.2 and NP\_001072986.1).

### Immunogen

Peptide with sequence C-HKGQASTRQKKRHRED, from the internal region of the protein sequence according to NP\_055630.2; NP\_001072986.1.

Please note the [peptide](#) is available for sale.

### Purification and Storage

Purified from goat serum by ammonium sulphate precipitation followed by antigen affinity chromatography using the immunizing peptide.

Supplied at 0.5 mg/ml in Tris saline, 0.02% sodium azide, pH7.3 with 0.5% bovine serum albumin.

Aliquot and store at -20°C. Minimize freezing and thawing.

### Applications Tested

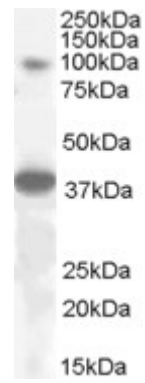
**Peptide ELISA:** antibody detection limit dilution 1:32000.

**Western blot:** Approx 100kDa band observed in Human Heart and Skeletal Muscle lysates (calculated MW of 102kDa according to NP\_001072986.1 and 110kDa according to NP\_055630.2). Recommended concentration: 0.05-0.1µg/ml. An additional band of unknown identity was also consistently observed at 38kDa. This band was successfully blocked by incubation with the immunising peptide. We would appreciate any feedback from people in the field - have any such results been reported with other antibodies/lysates? Have any further splice variants/modified forms been reported?

### Species Reactivity

**Tested:** Human

**Expected from sequence similarity:** Human, Mouse, Rat, Dog



EB08015 (0.05µg/ml) staining of Human Heart lysate (35µg protein in RIPA buffer). Primary incubation was 1 hour. Detected by chemiluminescence.