



## UK Office

### Everest Biotech Ltd

Cherwell Innovation Centre  
77 Heyford Park  
Upper Heyford  
Oxfordshire  
OX25 5HD  
UK

Enquiries:

[info@everestbiotech.com](mailto:info@everestbiotech.com)

Sales:

[sales@everestbiotech.com](mailto:sales@everestbiotech.com)

Tech support:

[support@everestbiotech.com](mailto:support@everestbiotech.com)

Tel: +44 (0)1869 238326

Fax: +44 (0)1869 238327

## US Office

### Everest Biotech c/o Abcore

405 Maple Street, Suite A106  
Ramona,  
CA 92065  
USA

Inquiries:

[info@everestbiotech.com](mailto:info@everestbiotech.com)

Sales:

[usasales@everestbiotech.com](mailto:usasales@everestbiotech.com)

Tech support:

[support@everestbiotech.com](mailto:support@everestbiotech.com)

Tel: 888-320-4628 (toll-free)

Fax: 888-841-9041

[www.everestbiotech.com](http://www.everestbiotech.com)

**Research Use Only. Not for  
diagnostic or therapeutic use.**

## EB07966 - Goat Anti-Thrb (zebrafish) Antibody

Size: 100µg specific antibody in 200µl



### Target Protein

**Principal Names:** thrb, thyroid hormone receptor beta, NR1A2, TR-beta, TR[b]1, fj24f03, trb, wu:fj24f03

**Official Symbol:** thrb

**Accession Number(s):** NP\_571415.1

**Important Comments:** This antibody is not expected to cross-react to Thra.

### Immunogen

Peptide with sequence C-DIGSAPIVNAPEGNKVD, from the internal region of the protein sequence according to NP\_571415.1.

Please note the [peptide](#) is available for sale.

### Purification and Storage

Purified from goat serum by ammonium sulphate precipitation followed by antigen affinity chromatography using the immunizing peptide.

Supplied at 0.5 mg/ml in Tris saline, 0.02% sodium azide, pH7.3 with 0.5% bovine serum albumin.

Aliquot and store at -20°C. Minimize freezing and thawing.

### Applications Tested

**Peptide ELISA:** antibody detection limit dilution 1:32000.

**Western blot:** Approx 50kDa band observed in Zebrafish adult Heart lysates (calculated MW of 44.3kDa according to NP\_571415.1). Recommended concentration: 2-5µg/ml.

### Species Reactivity

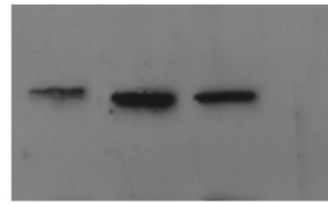
**Tested:** Zebrafish

**Expected from sequence similarity:** Zebrafish

## Adult hearts samples

50 kd

37 kd



EB07966 (2.5µg/ml) staining of Zebrafish adult Heart lysate (35µg protein in RIPA buffer). Primary incubation was 1 hour. Detected by chemiluminescence.