



UK Office

Everest Biotech Ltd

Cherwell Innovation Centre
77 Heyford Park
Upper Heyford
Oxfordshire
OX25 5HD
UK

Enquiries:

info@everestbiotech.com

Sales:

sales@everestbiotech.com

Tech support:

support@everestbiotech.com

Tel: +44 (0)1869 238326

www.everestbiotech.com

**Research Use Only. Not for
diagnostic or therapeutic use.**

EB09793 - Goat Anti-TIAL1 & TIA Antibody

Size: 100µg specific antibody in 200µl



Target Protein

Principal Names: MGC33401, OTTHUMP00000020602, OTTHUMP00000020605, TCBP, T-cluster binding protein, TIA1 cytotoxic granule-associated RNA binding protein-like 1, TIA1 cytotoxic granule-associated RNA-binding p, TIA-1 related protein, TIA-1-related nucleolysin, TIAR, TIAL1

Official Symbol: TIAL1

Accession Number(s): NP_003243.1; NP_001029097.1

Human GeneID(s): [7073](#) , [7072](#)

Non-Human GeneID(s): 21843 (mouse)

Important Comments: This antibody is expected to recognize both isoforms (NP_003243.1; NP_001029097.1).

Immunogen

Peptide with sequence C-SPEITTEDIKSAFAP, from the internal region of the protein sequence according to NP_003243.1; NP_001029097.1.

Please note the [peptide](#) is available for sale.

Purification and Storage

Purified from goat serum by ammonium sulphate precipitation followed by antigen affinity chromatography using the immunizing peptide.

Supplied at 0.5 mg/ml in Tris saline, 0.02% sodium azide, pH7.3 with 0.5% bovine serum albumin.

Aliquot and store at -20°C. Minimize freezing and thawing.

Applications Tested

Peptide ELISA: antibody detection limit dilution 1:64000.

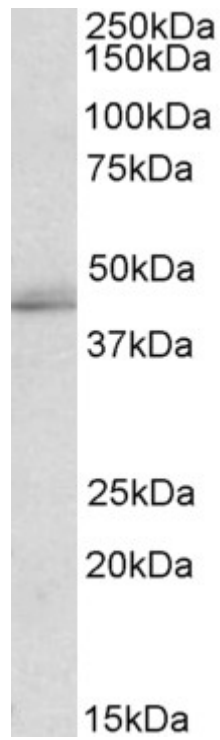
Western blot: Approx 45kDa band observed in lysates of cell line K562 (calculated MW of 43.4kDa according to NP_001029097.1). Recommended concentration: 1-3µg/ml.

IHC: In paraffin embedded Human Skin shows staining of select keratinocytes. Recommended concentration, 3-5µg/ml.

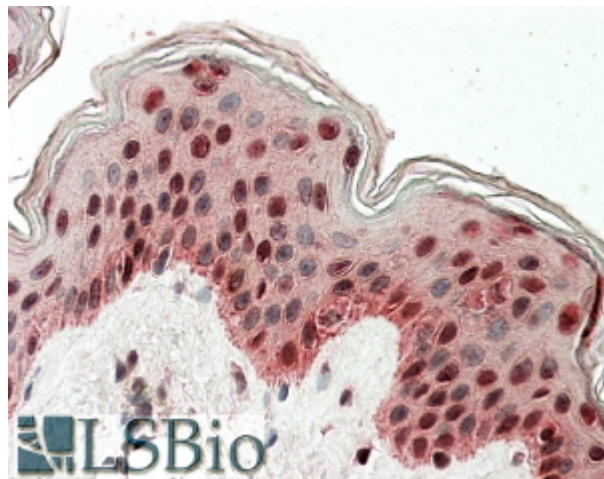
Species Reactivity

Tested: Human

Expected from sequence similarity: Human, Mouse, Dog, Cow



EB09793 (2 μ g/ml) staining of K562 lysate (35 μ g protein in RIPA buffer). Primary incubation was 1 hour. Detected by chemiluminescence.



EB09793 (3.8 μ g/ml) staining of paraffin embedded Human Skin. Steamed antigen retrieval with citrate buffer pH 6, AP-staining.