



## International Office

### Everest Biotech Ltd

Vector Laboratories, Inc.  
6737 Mowry Ave  
Newark, CA 94560  
United States

Customer Service:

[customerservice@vectorlabs.com](mailto:customerservice@vectorlabs.com)

Technical Service:

[technical@vectorlabs.com](mailto:technical@vectorlabs.com)

Tel: +1 (800) 227-6666

[www.everestbiotech.com](http://www.everestbiotech.com)

**Research Use Only. Not for  
diagnostic or therapeutic use.**

## EB06182 - Goat Anti-TIAM1 Antibody

Size: 100µg specific antibody in 200µl



### Target Protein

**Principal Names:** TIAM1, T-cell lymphoma invasion and metastasis 1, human  
T-lymphoma invasion and metastasis inducing TIAM1 protein

**Official Symbol:** TIAM1

**Accession Number(s):** NP\_003244; NP\_001340613.1; NP\_001340614.1;  
NP\_001340615.1; NP\_001340616.1

**Human GeneID(s):** [7074](#)

**Non-Human GeneID(s):** 21844 (mouse)

### Immunogen

Peptide with sequence C-EDFAPSRKLNTEI, from the C Terminus of the protein  
sequence according to NP\_003244; NP\_001340613.1; NP\_001340614.1;  
NP\_001340615.1; NP\_001340616.1.

Please note the [peptide](#) is available for sale.

### Purification and Storage

Purified from goat serum by ammonium sulphate precipitation followed by antigen affinity  
chromatography using the immunizing peptide.

Supplied at 0.5 mg/ml in Tris saline, 0.02% sodium azide, pH7.3 with 0.5% bovine serum  
albumin.

Aliquot and store at -20°C. Minimize freezing and thawing.

### Applications Tested

**Peptide ELISA:** antibody detection limit dilution 1:128000.

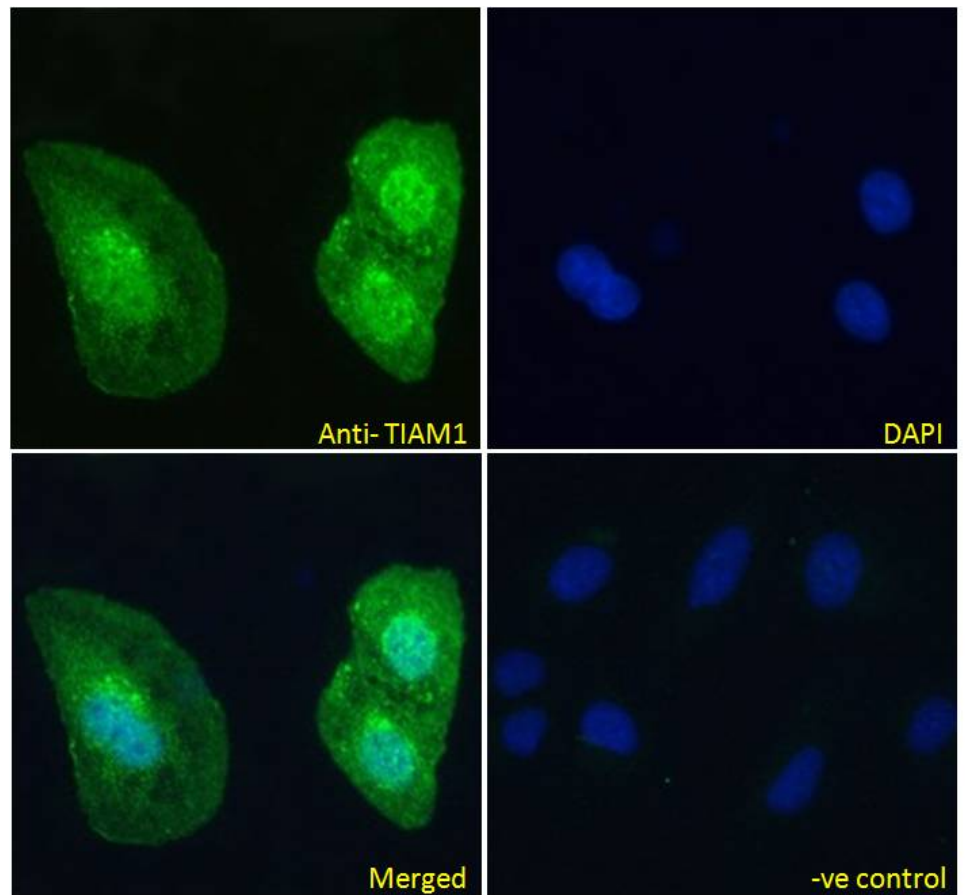
**Immunofluorescence:** Strong expression of the protein seen in the cytoplasm and nuclei  
of U2OS cells. Recommended concentration: 10µg/ml.

**Flow Cytometry:** Flow cytometric analysis of Jurkat cells. Recommended concentration:  
10ug/ml.

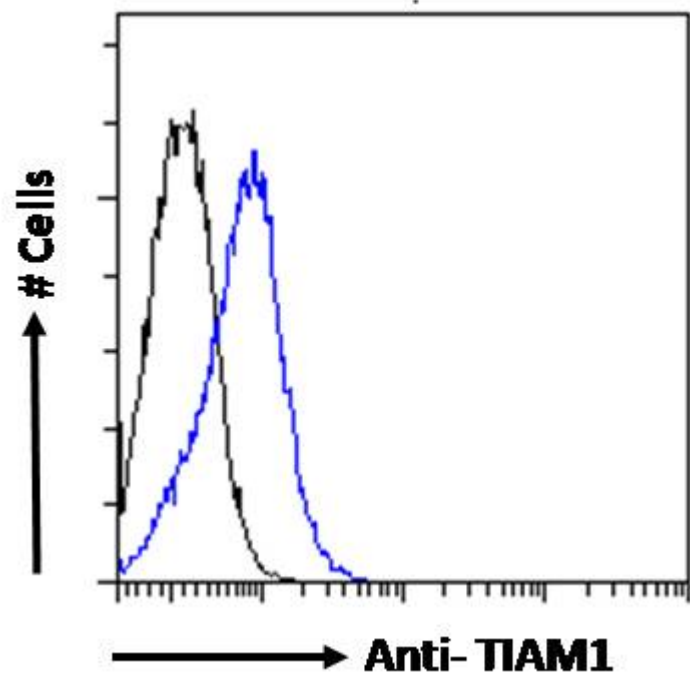
### Species Reactivity

**Tested:** Human

**Expected from sequence similarity:** Human



EB06182 Immunofluorescence analysis of paraformaldehyde fixed U2OS cells, permeabilized with 0.15% Triton. Primary incubation 1hr (10ug/ml) followed by Alexa Fluor 488 secondary antibody (4ug/ml), showing nuclear and cytoplasmic staining. The nuclear stain is DAPI (blue). Negative control: Unimmunized goat IgG (10ug/ml) followed by Alexa Fluor 488 secondary antibody (4ug/ml).



EB06182 Flow cytometric analysis of paraformaldehyde fixed Jurkat cells (blue line), permeabilized with 0.5% Triton. Primary incubation 1hr (10ug/ml) followed by Alexa Fluor 488 secondary antibody (0.4ug/ml). IgG control: Unimmunized goat IgG (black line) followed by Alexa Fluor 488 secondary antibody.