



## EB07113 - Goat Anti-TIM3 / HAVCR2 Antibody

Size: 100µg specific antibody in 200µl



### UK Office

**Everest Biotech Ltd**  
Cherwell Innovation Centre  
77 Heyford Park  
Upper Heyford  
Oxfordshire  
OX25 5HD  
UK

Enquiries:

[info@everestbiotech.com](mailto:info@everestbiotech.com)

Sales:

[sales@everestbiotech.com](mailto:sales@everestbiotech.com)

Tech support:

[support@everestbiotech.com](mailto:support@everestbiotech.com)

Tel: +44 (0)1869 238326

Fax: +44 (0)1869 238327

### US Office

**Everest Biotech c/o Abcore**  
405 Maple Street, Suite A106  
Ramona,  
CA 92065  
USA

Inquiries:

[info@everestbiotech.com](mailto:info@everestbiotech.com)

Sales:

[usasales@everestbiotech.com](mailto:usasales@everestbiotech.com)

Tech support:

[support@everestbiotech.com](mailto:support@everestbiotech.com)

Tel: 888-320-4628 (toll-free)

Fax: 888-841-9041

[www.everestbiotech.com](http://www.everestbiotech.com)

**Research Use Only. Not for  
diagnostic or therapeutic use.**

### Target Protein

**Principal Names:** HAVCR2, TIM3, hepatitis A virus cellular receptor 2, FLJ14428, KIM-3, TIMD3, Tim-3, T cell immunoglobulin mucin 3, T cell immunoglobulin mucin-3, kidney injury molecule-3

**Official Symbol:** HAVCR2

**Accession Number(s):** NP\_116171.3

**Human GeneID(s):** [84868](#)

### Immunogen

Peptide with sequence C-KWYSHSKEKIQN, from the internal region of the protein sequence according to NP\_116171.3.

Please note the [peptide](#) is available for sale.

### Purification and Storage

Purified from goat serum by ammonium sulphate precipitation followed by antigen affinity chromatography using the immunizing peptide.

Supplied at 0.5 mg/ml in Tris saline, 0.02% sodium azide, pH7.3 with 0.5% bovine serum albumin.

Aliquot and store at -20°C. Minimize freezing and thawing.

### Applications Tested

**Peptide ELISA:** antibody detection limit dilution 1:32000.

**Western blot:** Approx 38kDa band observed in lysates of cell lines Jurkat and MOLT-4 and in Human Tonsil lysates (calculated MW of 33.4kDa according to NP\_116171.3).

Recommended concentration: 1-3µg/ml. Primary incubation 1 hour at room temperature.

**Negative Control:** A431 (squamous carcinoma) cell lysate.

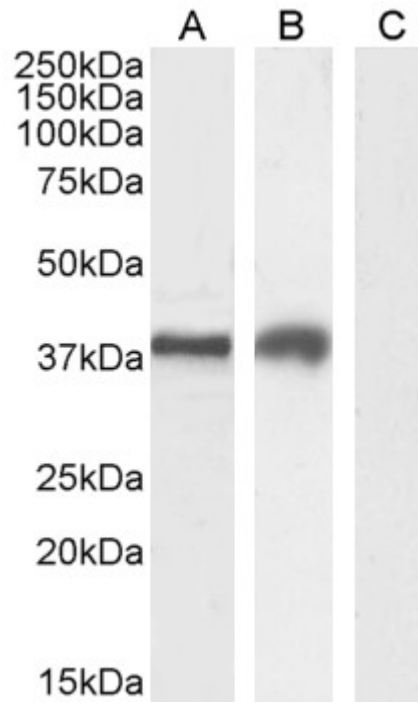
**Immunofluorescence:** Strong expression of the protein seen in the cytoplasm/membranes and nuclei of HepG2 cells. Recommended concentration: 10µg/ml.

**Flow Cytometry:** Flow cytometric analysis of HepG2 cells. Recommended concentration: 10ug/ml.

### Species Reactivity

**Tested:** Human

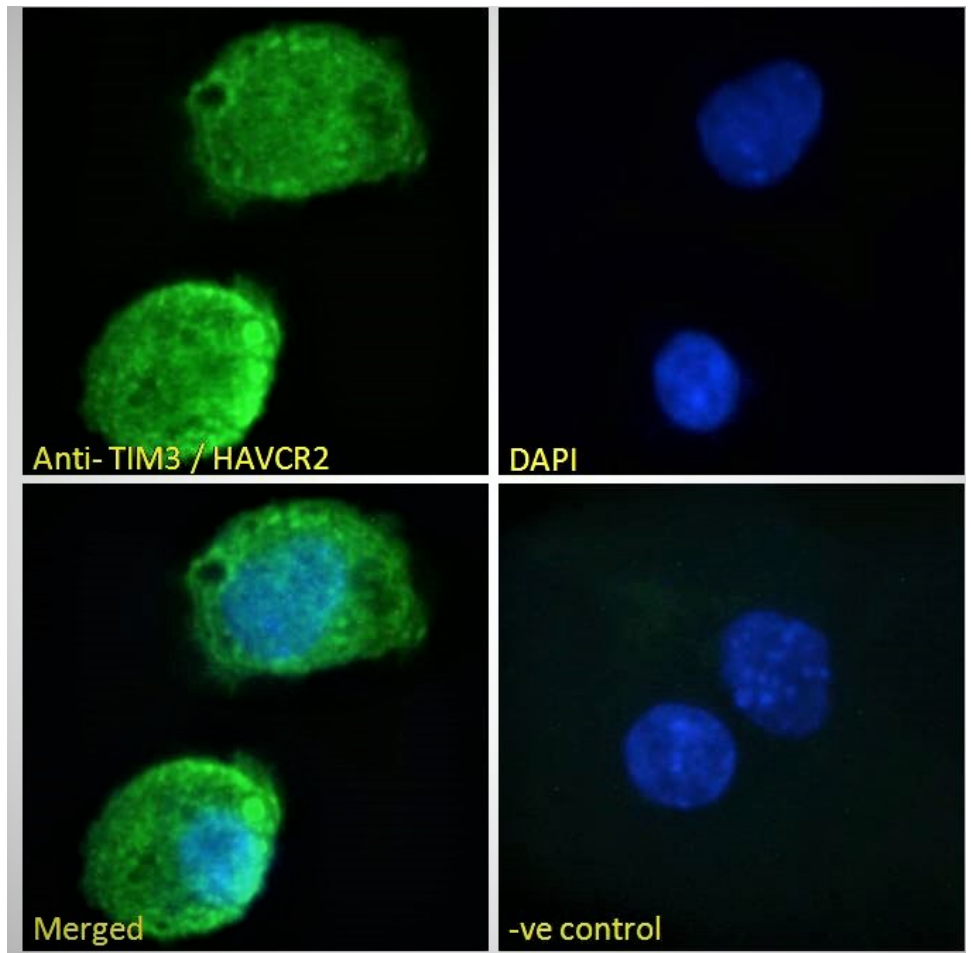
**Expected from sequence similarity:** Human, Dog



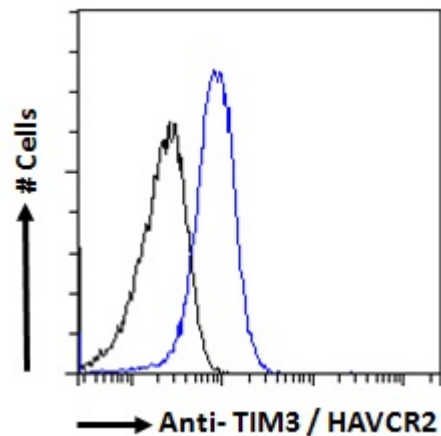
EB07113 (2 $\mu$ g/ml) staining of Jurkat (A), MOLT4 (B) and negative control A431 (C) cell lysate (35 $\mu$ g protein in RIPA buffer). Detected by chemiluminescence.



EB07113 (1 $\mu$ g/ml) staining of Human Tonsil lysate (35 $\mu$ g protein in RIPA buffer). Detected by chemiluminescence.



EB07113 Immunofluorescence analysis of paraformaldehyde fixed HepG2 cells, permeabilized with 0.15% Triton. Primary incubation 1hr (10ug/ml) followed by Alexa Fluor 488 secondary antibody (2ug/ml), showing membrane/cytoplasmic and nuclear staining. The nuclear stain is DAPI (blue). Negative control: Unimmunized goat IgG (10ug/ml) followed by Alexa Fluor 488 secondary antibody (2ug/ml).



EB07113 Flow cytometric analysis of paraformaldehyde fixed HepG2 cells (blue line), permeabilized with 0.5% Triton. Primary incubation 1hr (10ug/ml) followed by Alexa Fluor 488 secondary antibody (1ug/ml). IgG control: Unimmunized goat IgG (black line) followed by Alexa Fluor 488 secondary antibody.