

International Office

Everest Biotech Ltd

Vector Laboratories, Inc.
6737 Mowry Ave
Newark, CA 94560
United States

Customer Service:

customerservice@vectorlabs.com

Technical Service:

technical@vectorlabs.com

Tel: +1 (800) 227-6666

www.everestbiotech.com

**Research Use Only. Not for
diagnostic or therapeutic use.**

EB06513 - Goat Anti-TIM50 Antibody

Size: 100µg specific antibody in 200µl



Target Protein

Principal Names: TIMM50, TIM50L, translocase of inner mitochondrial membrane 50 homolog (yeast), Tim50-like protein, homolog of yeast Tim50, translocase of inner mitochondrial membrane 50 homolog (S. cerevisiae), MGC102733, TIM50

Official Symbol: TIMM50

Accession Number(s): NP_001001563.1

Human GeneID(s): [92609](#)

Important Comments: This antibody is expected to recognise an epitope corresponding to aa 396-409 of human TIM50.

Immunogen

Peptide with sequence CDVRTVLEHYALEDD, from the internal region of the protein sequence according to NP_001001563.1.

Please note the [peptide](#) is available for sale.

Purification and Storage

Purified from goat serum by ammonium sulphate precipitation followed by antigen affinity chromatography using the immunizing peptide.

Supplied at 0.5 mg/ml in Tris saline, 0.02% sodium azide, pH7.3 with 0.5% bovine serum albumin.

Aliquot and store at -20°C. Minimize freezing and thawing.

Applications Tested

Peptide ELISA: antibody detection limit dilution 1:128000.

Western blot: Approx 39kDa in Human Heart lysate (Calculated MW of 50.5kDa according to NP_001001563.1). The observed molecular weight corresponds to earlier finding in literature with different antibodies (Guo et al, J Bio Chem 2004 Jun 4;279:24813-25; PMID: 15044455). Recommended concentration: 0.5-1.5µg/ml.

Species Reactivity

Tested: Human

Expected from sequence similarity: Human, Mouse, Rat, Dog, Cow

Specific Reference

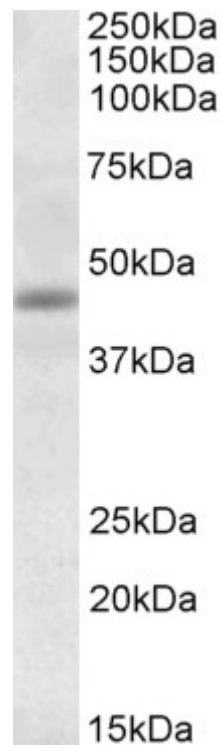
This antibody (previous batch) has been successfully used in Western blot on Dog:

Marfè G, Tafani M, Fiorito F, Pagnini U, Iovane G, De Martino L.

Involvement of FOXO transcription factors, TRAIL-FasL/Fas, and sirtuin proteins family in canine coronavirus type II-induced apoptosis.

PLoS One. 2011;6(11).

PMID: 22087287



EB06513 (1µg/ml) staining of Human Heart lysate (35µg protein in RIPA buffer). Primary incubation was 1 hour.
Detected by chemiluminescence.