



UK Office

Everest Biotech Ltd

Cherwell Innovation Centre
77 Heyford Park
Upper Heyford
Oxfordshire
OX25 5HD
UK

Enquiries:

info@everestbiotech.com

Sales:

sales@everestbiotech.com

Tech support:

support@everestbiotech.com

Tel: +44 (0)1869 238326

Fax: +44 (0)1869 238327

US Office

Everest Biotech c/o Abcore

405 Maple Street, Suite A106
Ramona,
CA 92065
USA

Inquiries:

info@everestbiotech.com

Sales:

usasales@everestbiotech.com

Tech support:

support@everestbiotech.com

Tel: 888-320-4628 (toll-free)

Fax: 888-841-9041

www.everestbiotech.com

**Research Use Only. Not for
diagnostic or therapeutic use.**

EB06513 - Goat Anti-TIM50 Antibody

Size: 100µg specific antibody in 200µl



Target Protein

Principal Names: TIMM50, TIM50L, translocase of inner mitochondrial membrane 50 homolog (yeast), Tim50-like protein, homolog of yeast Tim50, translocase of inner mitochondrial membrane 50 homolog (S. cerevisiae), MGC102733, TIM50

Official Symbol: TIMM50

Accession Number(s): NP_001001563.1

Human GeneID(s): [92609](#)

Important Comments: This antibody is expected to recognise an epitope corresponding to aa 396-409 of human TIM50.

Immunogen

Peptide with sequence CDVRTVLEHYALEDD, from the internal region of the protein sequence according to NP_001001563.1.

Please note the [peptide](#) is available for sale.

Purification and Storage

Purified from goat serum by ammonium sulphate precipitation followed by antigen affinity chromatography using the immunizing peptide.

Supplied at 0.5 mg/ml in Tris saline, 0.02% sodium azide, pH7.3 with 0.5% bovine serum albumin.

Aliquot and store at -20°C. Minimize freezing and thawing.

Applications Tested

Peptide ELISA: antibody detection limit dilution 1:128000.

Western blot: Approx 39kDa in Human Heart lysate (Calculated MW of 50.5kDa according to NP_001001563.1) . The observed molecular weight corresponds to earlier finding in literature with different antibodies (Guo et al, J Bio Chem 2004 Jun 4;279:24813-25; PMID: 15044455). Recommended concentration: 0.5-1.5µg/ml.

Species Reactivity

Tested: Human

Expected from sequence similarity: Human, Mouse, Rat, Dog, Cow

Specific Reference

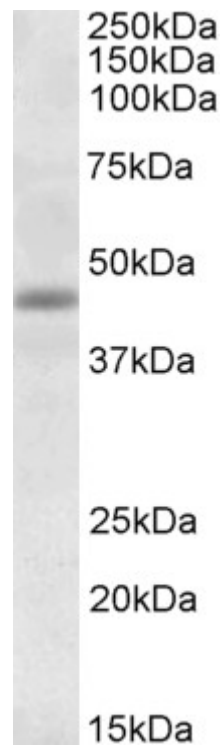
This antibody (previous batch) has been successfully used in Western blot on Dog:

Marfè G, Tafani M, Fiorito F, Pagnini U, Iovane G, De Martino L.

Involvement of FOXO transcription factors, TRAIL-FasL/Fas, and sirtuin proteins family in canine coronavirus type II-induced apoptosis.

PLoS One. 2011;6(11).

PMID: 22087287



EB06513 (1 μ g/ml) staining of Human Heart lysate (35 μ g protein in RIPA buffer). Primary incubation was 1 hour.
Detected by chemiluminescence.