



UK Office

Everest Biotech Ltd

Cherwell Innovation Centre
77 Heyford Park
Upper Heyford
Oxfordshire
OX25 5HD
UK

Enquiries:

info@everestbiotech.com

Sales:

sales@everestbiotech.com

Tech support:

support@everestbiotech.com

Tel: +44 (0)1869 238326

www.everestbiotech.com

**Research Use Only. Not for
diagnostic or therapeutic use.**

EB11201 - Goat Anti-TIMP1 (aa129-143) Antibody

Size: 100µg specific antibody in 200µl



Target Protein

Principal Names: CLGI, collagenase inhibitor, EPA, EPO, erythroid potentiating activity, erythroid-potentiating activity, fibroblast collagenase inhibitor, FLJ90373, HCl, metalloproteinase inhibitor 1, OTTHUMP00000023216, TIMP, TIMP metalloproteinase inhibitor 1, TIMP-1, tissue inhibitor of metalloproteinases 1, TIMP1

Official Symbol: TIMP1

Accession Number(s): NP_003245.1

Human GeneID(s): [7076](#)

Non-Human GeneID(s): 116510 (rat)

Immunogen

Peptide with sequence C-NSLSLAQRRGFTKTY, from the internal region of the protein sequence according to NP_003245.1.

Please note the [peptide](#) is available for sale.

Purification and Storage

Purified from goat serum by ammonium sulphate precipitation followed by antigen affinity chromatography using the immunizing peptide.

Supplied at 0.5 mg/ml in Tris saline, 0.02% sodium azide, pH7.3 with 0.5% bovine serum albumin.

Aliquot and store at -20°C. Minimize freezing and thawing.

Applications Tested

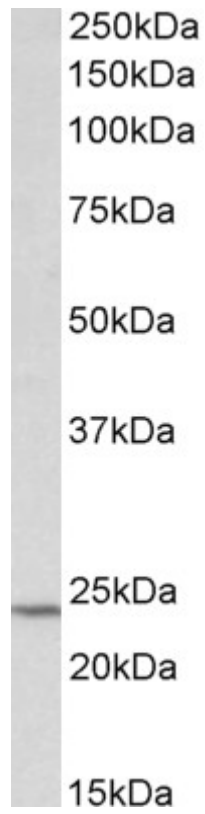
Peptide ELISA: antibody detection limit dilution 1:16000.

Western blot: Approx 24kDa band observed in Human Kidney and Liver lysates (calculated MW of 23.2kDa according to NP_003245.1). Recommended concentration: 0.1-0.3µg/ml.

Species Reactivity

Tested: Human

Expected from sequence similarity: Human, Dog,



EB11201 (0.1 μ g/ml) staining of Human Kidney lysate (35 μ g protein in RIPA buffer). Primary incubation was 1 hour. Detected by chemiluminescence.