



International Office

Everest Biotech Ltd

Vector Laboratories, Inc.
6737 Mowry Ave
Newark, CA 94560
United States

Customer Service:

customerservice@vectorlabs.com

Technical Service:

technical@vectorlabs.com

Tel: +1 (800) 227-6666

www.everestbiotech.com

**Research Use Only. Not for
diagnostic or therapeutic use.**

EB09794 - Goat Anti-TIPRL Antibody

Size: 100µg specific antibody in 200µl



Target Protein

Principal Names: CG9578-like, dJ69E11.3, MGC3794, OTTHUMP00000032581, OTTHUMP00000032582, putative MAPK activating protein, TIP, TIP41, TIP41, TOR signaling pathway regulator-like (S. cerevisiae), TIP41, TOR signalling pathway regulator-like, yeast YPR037W and worm, TIPRL

Official Symbol: TIPRL

Accession Number(s): NP_690866.1

Human GeneID(s): [261726](#)

Non-Human GeneID(s): 226591 (mouse), 360869 (rat)

Important Comments: This antibody is expected to recognize isoform 1 (NP_690866.1).

Immunogen

Peptide with sequence C-RIDPNPADSQKSTQ, from the C Terminus of the protein sequence according to NP_690866.1.

Please note the [peptide](#) is available for sale.

Purification and Storage

Purified from goat serum by ammonium sulphate precipitation followed by antigen affinity chromatography using the immunizing peptide.

Supplied at 0.5 mg/ml in Tris saline, 0.02% sodium azide, pH7.3 with 0.5% bovine serum albumin.

Aliquot and store at -20°C. Minimize freezing and thawing.

Applications Tested

Peptide ELISA: antibody detection limit dilution 1:16000.

Western blot: Approx. 30kDa band observed in lysates of cell lines Daudi, K562, HeLa, HepG2 and peripheral blood Monocytes (PBM), and approx. 32kDa in lysates of cell lines A431 and MOLT4 (calculated MW of 31.4kDa according to NP_690866.1).

Recommended concentration: 0.03-0.3µg/ml. Primary incubation 1 hour at room temperature.

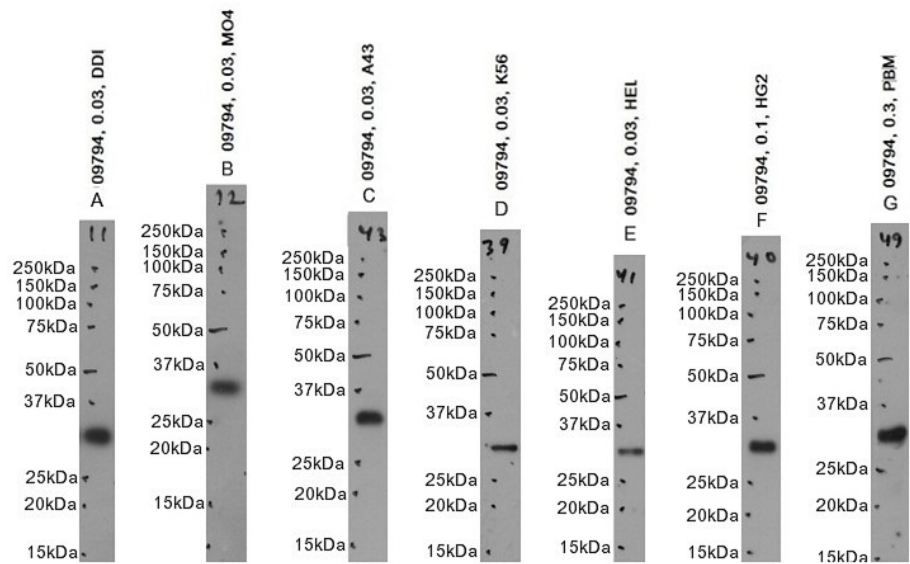
IHC: Paraffin embedded Human Breast. Recommended concentration: 3.75µg/ml.

Flow Cytometry: Flow cytometric analysis of A431 cells. Recommended concentration: 10ug/ml.

Species Reactivity

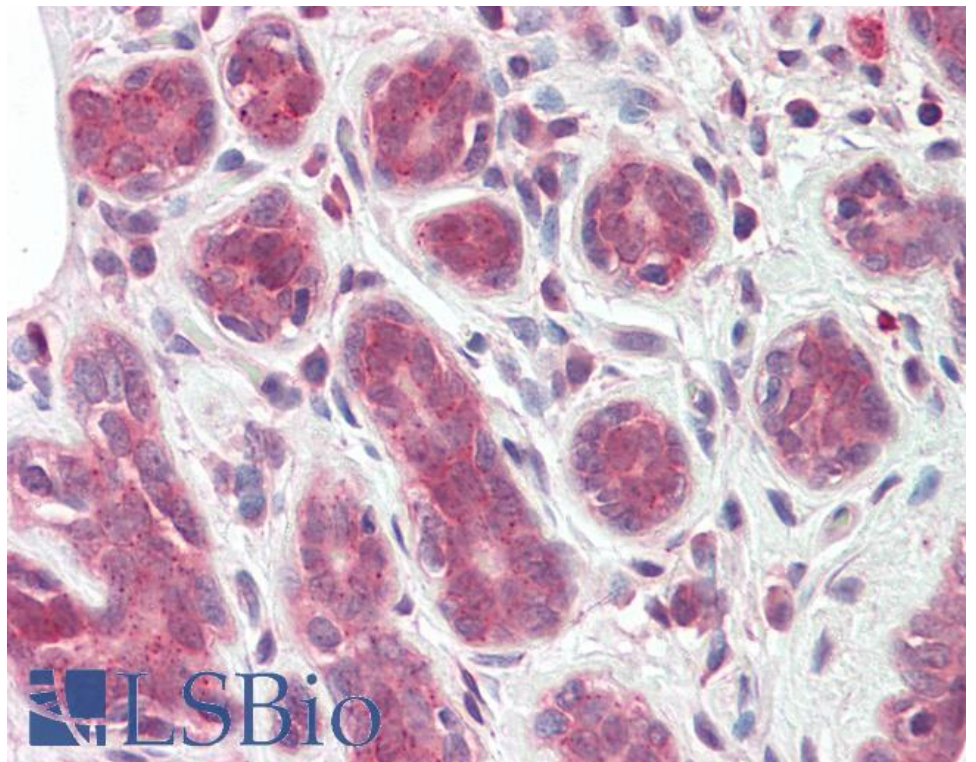
Tested: Human

Expected from sequence similarity: Human

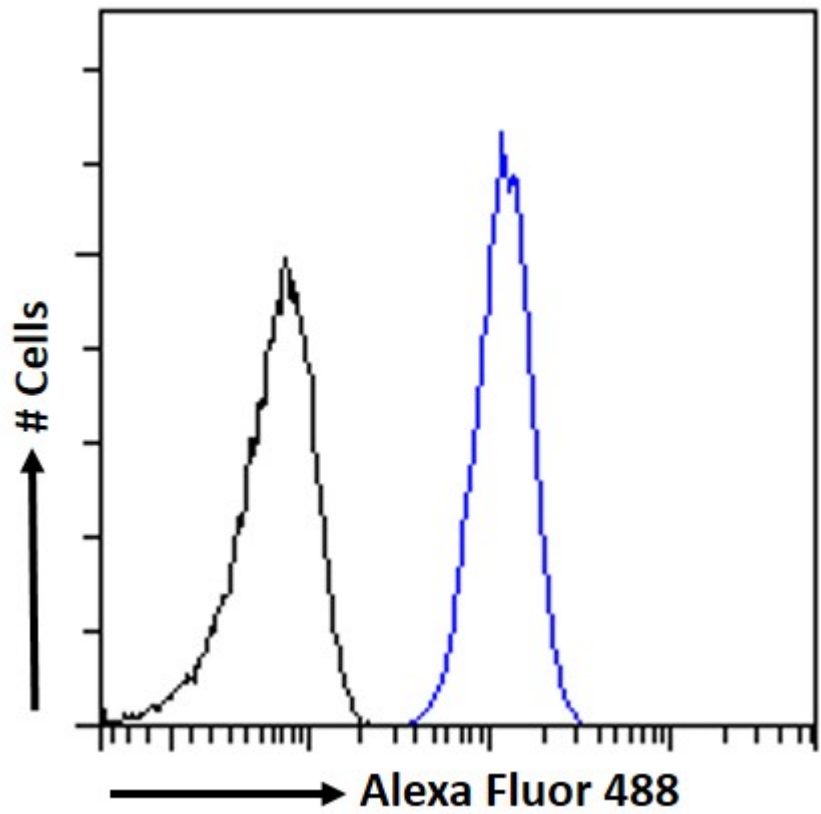


EB09794 optimised QC. Primary incubation 1 hour at room temperature.

Images A, B, C, D, E: Daudi, MOLT4, A431, K562, HeLa cell lysates at primary Ab concentration 0.03ug/ml. Image F: HepG2 cell lysate at primary Ab concentration 0.1ug/ml. Image G: PBM cell lysate at primary Ab concentration 0.3ug/ml (Loaded 35µg protein in RIPA buffer, per lane). Detected by chemiluminescence.



EB09794 (3.75µg/ml) staining of paraffin embedded Human Breast. Steamed antigen retrieval with citrate buffer pH 6, AP-staining.



EB09794 Flow cytometric analysis of paraformaldehyde fixed A431 cells (blue line), permeabilized with 0.5% Triton. Primary incubation 1hr (10ug/ml) followed by Alexa Fluor 488 secondary antibody (1ug/ml). IgG control: Unimmunized goat IgG (black line) followed by Alexa Fluor 488 secondary antibody.