



UK Office

Everest Biotech Ltd

Cherwell Innovation Centre
77 Heyford Park
Upper Heyford
Oxfordshire
OX25 5HD
UK

Enquiries:

info@everestbiotech.com

Sales:

sales@everestbiotech.com

Tech support:

support@everestbiotech.com

Tel: +44 (0)1869 238326

Fax: +44 (0)1869 238327

US Office

Everest Biotech c/o Abcore

405 Maple Street, Suite A106
Ramona,
CA 92065
USA

Inquiries:

info@everestbiotech.com

Sales:

usasales@everestbiotech.com

Tech support:

support@everestbiotech.com

Tel: 888-320-4628 (toll-free)

Fax: 888-841-9041

www.everestbiotech.com

**Research Use Only. Not for
diagnostic or therapeutic use.**

EB06974 - Goat Anti-TIRAP Antibody

Size: 100µg specific antibody in 200µl



Target Protein

Principal Names: TIRAP, toll-interleukin 1 receptor (TIR) domain containing adaptor protein, HGNC:17192, FLJ42305, Mal, wyatt, MyD88 adapter-like protein, TIR domain-containing adapter protein, Toll-interleukin 1 receptor (TIR) domain-containing adapter protein, Toll-interleukin 1 receptor domain-containing adaptor protein, adapter protein wyatt, OTTHUMP00000179130, Toll-like receptor adaptor protein

Official Symbol: TIRAP

Accession Number(s): NP_001034750.1; NP_683708.1

Human GeneID(s): [114609](#)

Important Comments: This antibody is expected to recognize both reported isoforms (NP_001034750.1 and NP_683708.1).

Immunogen

Peptide with sequence C-QTLLKKPKKRPNSPE, from the internal region of the protein sequence according to NP_001034750.1; NP_683708.1.

Please note the [peptide](#) is available for sale.

Purification and Storage

Purified from goat serum by ammonium sulphate precipitation followed by antigen affinity chromatography using the immunizing peptide.

Supplied at 0.5 mg/ml in Tris saline, 0.02% sodium azide, pH7.3 with 0.5% bovine serum albumin.

Aliquot and store at -20°C. Minimize freezing and thawing.

Applications Tested

Peptide ELISA: antibody detection limit dilution 1:32000.

Western blot: Approx 22-23kDa band observed in lysates of cell lines A549 and K562 and in Human colorectal cancer lysates (calculated MW of 23.9kDa according to NP_001034750.11). Recommended concentration: 0.1-0.5µg/ml. Primary incubation 1 hour at room temperature.

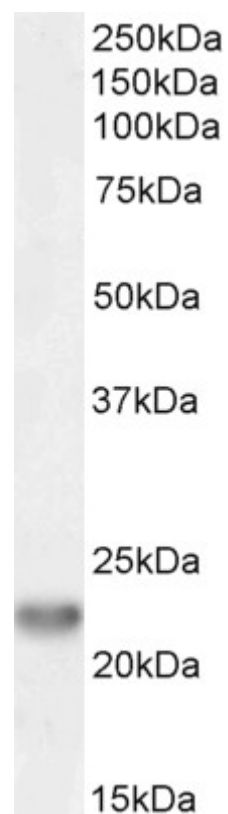
Species Reactivity

Tested: Human

Expected from sequence similarity: Human



EB06974 (0.3 μ g/ml) staining of A549 (A) and K562 (B) cell lysate (35 μ g protein in RIPA buffer). Detected by chemiluminescence.



EB06974 (0.3 μ g/ml) staining of Human colorectal cancer lysate (35 μ g protein in RIPA buffer). Detected by chemiluminescence.