



UK Office

Everest Biotech Ltd

Cherwell Innovation Centre
77 Heyford Park
Upper Heyford
Oxfordshire
OX25 5HD
UK

Enquiries:

info@everestbiotech.com

Sales:

sales@everestbiotech.com

Tech support:

support@everestbiotech.com

Tel: +44 (0)1869 238326

Fax: +44 (0)1869 238327

US Office

Everest Biotech c/o Abcore

405 Maple Street, Suite A106
Ramona,
CA 92065
USA

Inquiries:

info@everestbiotech.com

Sales:

usasales@everestbiotech.com

Tech support:

support@everestbiotech.com

Tel: 888-320-4628 (toll-free)

Fax: 888-841-9041

www.everestbiotech.com

**Research Use Only. Not for
diagnostic or therapeutic use.**

EB05048 - Goat Anti-Tissue Factor Pathway Inhibitor Antibody

Size: 100µg specific antibody in 200µl



Target Protein

Principal Names: tissue factor pathway inhibitor (lipoprotein-associated coagulation inhibitor), TFPI, EPI, LACI, TFI, TFPI1, OTTHUMP00000163472, OTTHUMP00000205431, anti-convertin, extrinsic pathway inhibitor, lipoprotein-associated coagulation inhibitor, tissue factor pathway inhibitor

Official Symbol: TFPI

Accession Number(s): NP_006278.1

Human GeneID(s): [7035](#)

Important Comments: This antibody is expected to recognize isoform a (NP_006278.1) only.

Immunogen

Peptide with sequence C-VKIAYEEIFVKNM, from the C Terminus of the protein sequence according to NP_006278.1.

Please note the [peptide](#) is available for sale.

Purification and Storage

Purified from goat serum by ammonium sulphate precipitation followed by antigen affinity chromatography using the immunizing peptide.

Supplied at 0.5 mg/ml in Tris saline, 0.02% sodium azide, pH7.3 with 0.5% bovine serum albumin.

Aliquot and store at -20°C. Minimize freezing and thawing.

Applications Tested

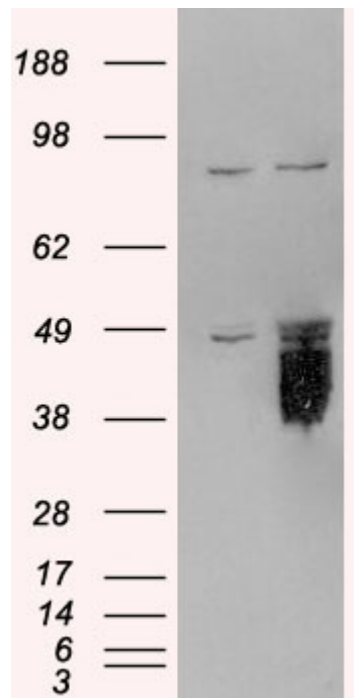
Peptide ELISA: antibody detection limit dilution 1:64000.

Western blot: Approx 50kDa band observed in lysates of cell lines HepG2 and HeLa (calculated MW of 35.0kDa according to NP_006278.1). In transfected HEK293 transiently expressing TFPI bands of approx. 38kDa to 45kDa are observed. These bands are not observed in the non-transfected HEK293. Recommended concentration: 0.3-1µg/ml.

Species Reactivity

Tested: Human

Expected from sequence similarity: Human



HEK293 overexpressing TFPI (RC219033) and probed with EB05048 (mock transfection in first lane), tested by Origene.



EB05048 staining (0.3µg/ml) of HeLa lysate (RIPA buffer, 35µg total protein cells per lane). Primary incubated for 1 hour. Detected by western blot using chemiluminescence.