



International Office

Everest Biotech Ltd

Vector Laboratories, Inc.
6737 Mowry Ave
Newark, CA 94560
United States

Customer Service:

customerservice@vectorlabs.com

Technical Service:

technical@vectorlabs.com

Tel: +1 (800) 227-6666

www.everestbiotech.com

**Research Use Only. Not for
diagnostic or therapeutic use.**

EB10208 - Goat Anti-TLR6 Antibody

Size: 100µg specific antibody in 200µl



Target Protein

Principal Names: CD286, OTTHUMP00000158730, toll-like receptor 6, TLR6

Official Symbol: TLR6

Accession Number(s): NP_006059.2

Human GeneID(s): [10333](#)

Immunogen

Peptide with sequence C-RGSTLLNFTLNH, from the internal region of the protein sequence according to NP_006059.2.

Please note the [peptide](#) is available for sale.

Purification and Storage

Purified from goat serum by ammonium sulphate precipitation followed by antigen affinity chromatography using the immunizing peptide.

Supplied at 0.5 mg/ml in Tris saline, 0.02% sodium azide, pH7.3 with 0.5% bovine serum albumin.

Aliquot and store at -20°C. Minimize freezing and thawing.

Applications Tested

Peptide ELISA: antibody detection limit dilution 1:1000.

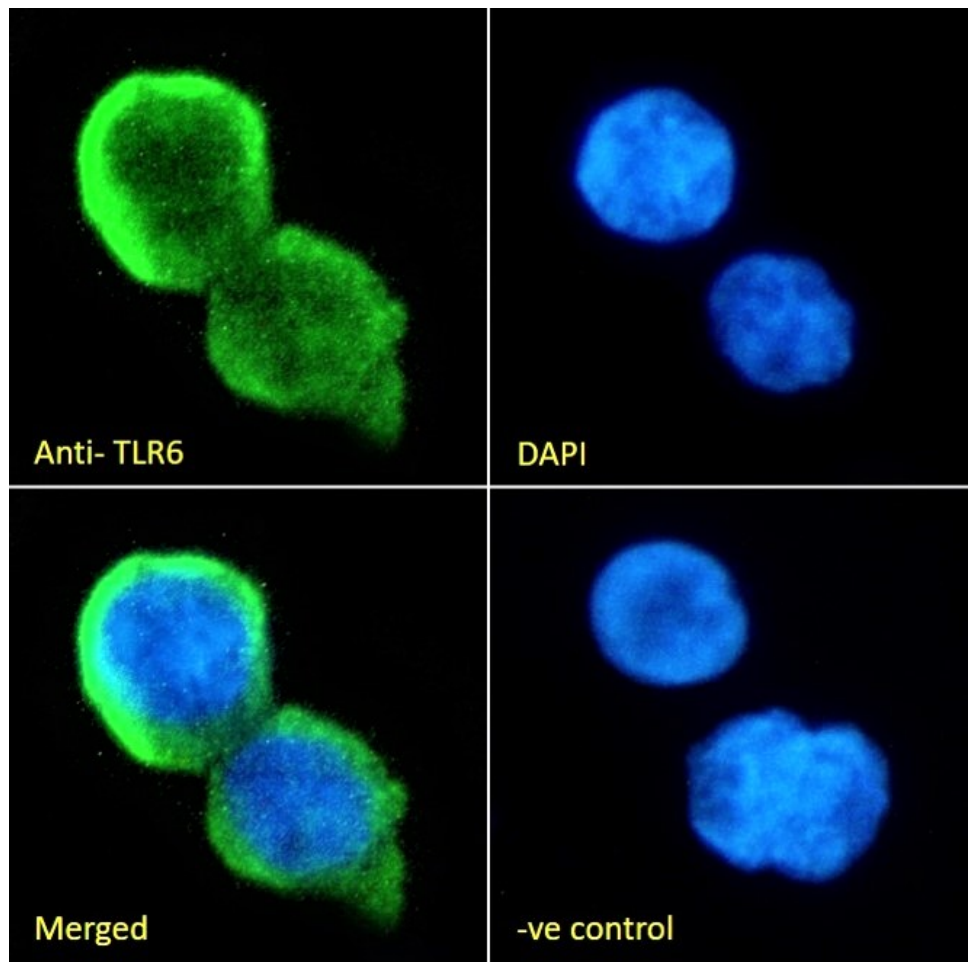
Immunofluorescence: Strong expression of the protein seen in THP-1 and A549 cells.
Recommended concentration: 10µg/ml.

Flow Cytometry: Flow cytometric analysis of THP-1 cells. Recommended concentration: 10ug/ml.

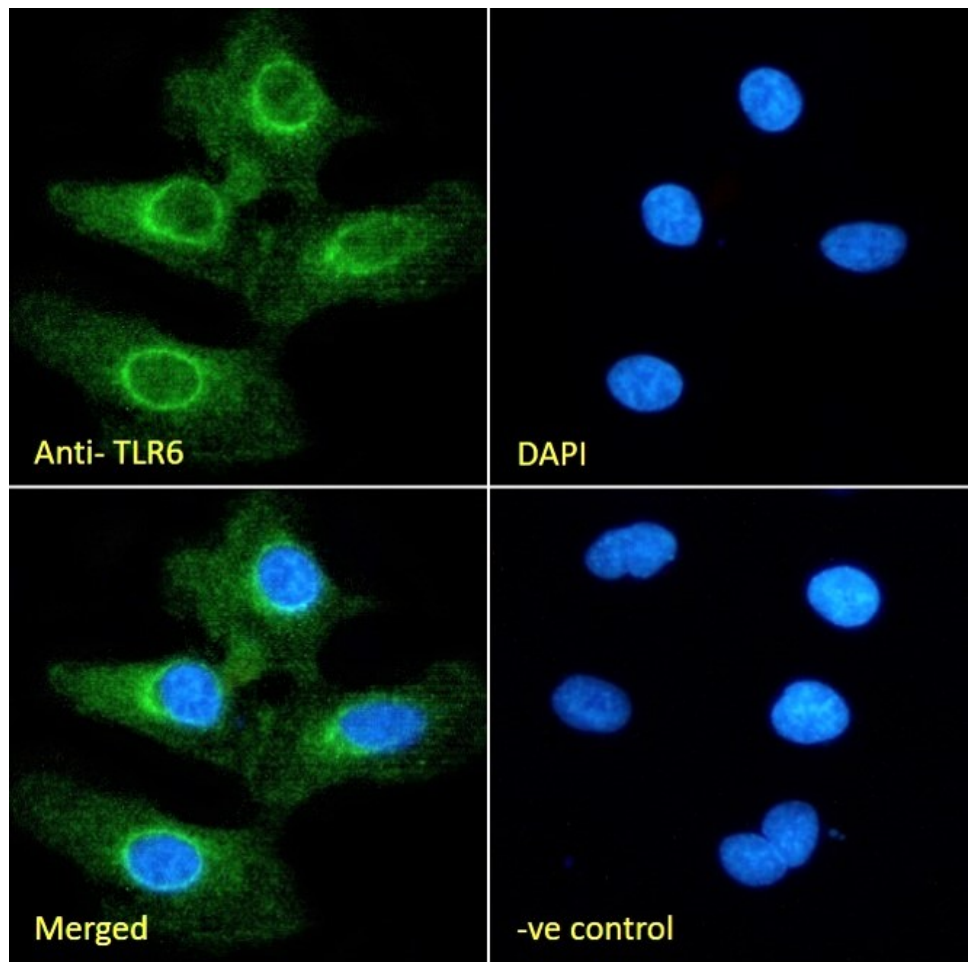
Species Reactivity

Tested: Human

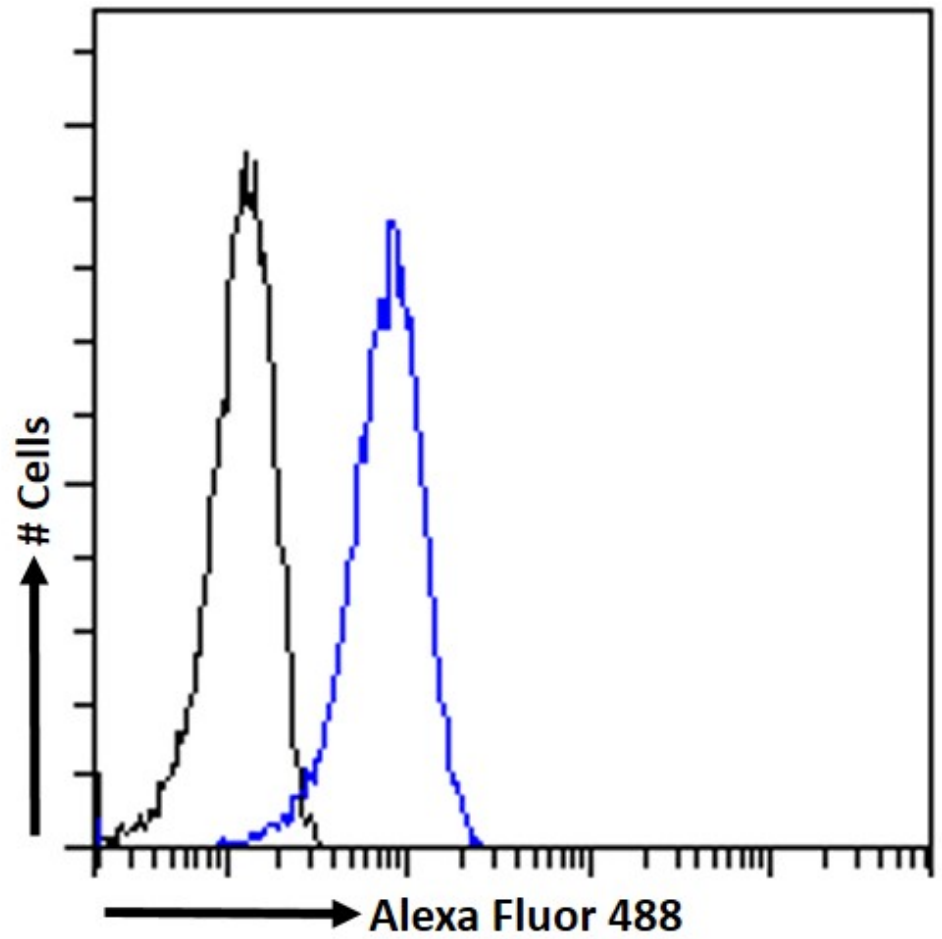
Expected from sequence similarity: Human, Cow, Pig, Sheep



EB10208 Immunofluorescence analysis of paraformaldehyde fixed THP-1 cells immobilized on Shifix™ coverslip, permeabilized with 0.15% Triton. Primary incubation 1hr (10ug/ml) followed by Alexa Fluor 488 secondary antibody (2ug/ml), showing membrane and cytoplasmic staining. The nuclear stain is DAPI (blue). Negative control: Unimmunized goat IgG (10ug/ml) followed by Alexa Fluor 488 secondary antibody (2ug/ml).



EB10208 Immunofluorescence analysis of paraformaldehyde fixed A549 cells, permeabilized with 0.15% Triton. Primary incubation 1hr (10ug/ml) followed by Alexa Fluor 488 secondary antibody (2ug/ml), showing cytoplasmic (endoplasmic reticulum) staining. The nuclear stain is DAPI (blue). Negative control: Unimmunized goat IgG (10ug/ml) followed by Alexa Fluor 488 secondary antibody (2ug/ml).



EB10208 Flow cytometric analysis of paraformaldehyde fixed THP-1 cells (blue line) permeabilized with 0.5% Triton. Primary incubation 1hr (10ug/ml) followed by Alexa Fluor 488® conjugated secondary antibody (1ug/ml).
IgG control: Unimmunized goat IgG (black line) followed by Alexa Fluor 488 secondary antibody.