



UK Office

Everest Biotech Ltd

Cherwell Innovation Centre
77 Heyford Park
Upper Heyford
Oxfordshire
OX25 5HD
UK

Enquiries:

info@everestbiotech.com

Sales:

sales@everestbiotech.com

Tech support:

support@everestbiotech.com

Tel: +44 (0)1869 238326

Fax: +44 (0)1869 238327

US Office

Everest Biotech c/o Abcore

405 Maple Street, Suite A106
Ramona,
CA 92065
USA

Inquiries:

info@everestbiotech.com

Sales:

usasales@everestbiotech.com

Tech support:

support@everestbiotech.com

Tel: 888-320-4628 (toll-free)

Fax: 888-841-9041

www.everestbiotech.com

**Research Use Only. Not for
diagnostic or therapeutic use.**

EB11397 - Goat Anti-TNFRSF1A / TNFR1 Antibody

Size: 100µg specific antibody in 200µl



Target Protein

Principal Names: CD120a, FPF, MGC19588, p55, p55-R, p60, TBP1, TNFAR, TNF-R, TNFR1, TNF-R1, TNFR55, TNF-R55, TNFR60, TNFR-I, TNF-R-I, tumor necrosis factor binding protein 1, tumor necrosis factor receptor 1A isoform beta, tumor necrosis factor receptor superfamily member 1A, tumor necrosis factor receptor superfamily, member 1A, tumor necrosis factor receptor type 1, tumor necrosis factor-alpha receptor, TNFRSF1A

Official Symbol: TNFRSF1A

Accession Number(s): NP_001056.1

Human GenelD(s): [7132](#)

Non-Human GenelD(s): 25625 (rat)

Immunogen

Peptide with sequence C-SDHEIDRLELQNGR, from the internal region of the protein sequence according to NP_001056.1.

Please note the [peptide](#) is available for sale.

Purification and Storage

Purified from goat serum by ammonium sulphate precipitation followed by antigen affinity chromatography using the immunizing peptide.

Supplied at 0.5 mg/ml in Tris saline, 0.02% sodium azide, pH7.3 with 0.5% bovine serum albumin.

Aliquot and store at -20°C. Minimize freezing and thawing.

Applications Tested

Peptide ELISA: antibody detection limit dilution 1:32000.

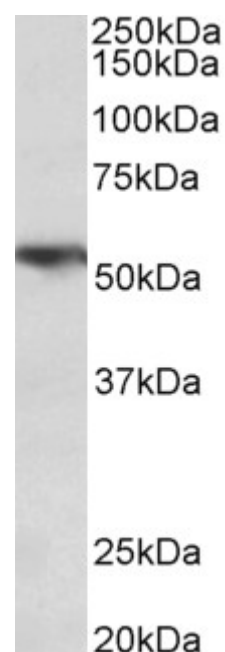
Western blot: Approx 52kDa band observed in Human Lung lysates and in lysates of cell lines A549, HepG2 and K562 (calculated MW of 50.5kDa according to NP_001056.1).

Recommended concentration: 0.3-1µg/ml.

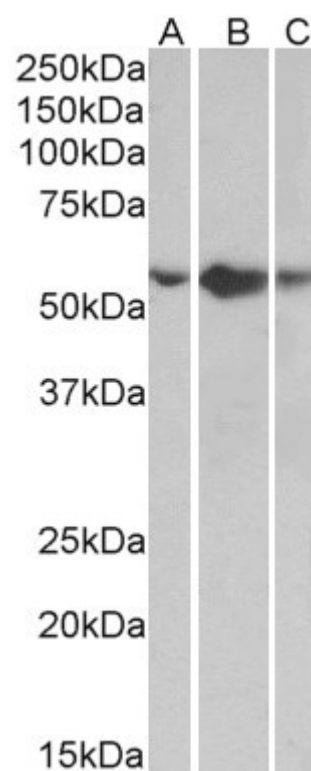
Species Reactivity

Tested: Human

Expected from sequence similarity: Human, Rat, Pig



EB11397 (0.3 μ g/ml) staining of Human Lung lysate (35 μ g protein in RIPA buffer). Primary incubation was 1 hour. Detected by chemiluminescence.



EB11397 (0.5 μ g/ml) staining of A549 (A), HepG2 (B) and K562 (C) lysates (35 μ g protein in RIPA buffer). Primary incubation was 1 hour. Detected by chemiluminescence.