

## UK Office

### Everest Biotech Ltd

Cherwell Innovation Centre  
77 Heyford Park  
Upper Heyford  
Oxfordshire  
OX25 5HD  
UK

Enquiries:

[info@everestbiotech.com](mailto:info@everestbiotech.com)

Sales:

[sales@everestbiotech.com](mailto:sales@everestbiotech.com)

Tech support:

[support@everestbiotech.com](mailto:support@everestbiotech.com)

Tel: +44 (0)1869 238326

[www.everestbiotech.com](http://www.everestbiotech.com)

**Research Use Only. Not for  
diagnostic or therapeutic use.**

## EB09379 - Goat Anti-TNFSF13 / APRIL Antibody

Size: 100µg specific antibody in 200µl



### Target Protein

**Principal Names:** TNFSF13, tumor necrosis factor (ligand) superfamily, member 13, APRIL, CD256, TALL2, TRDL-1, UNQ383/PRO715, ligand, OTTHUMP00000174780, TNF- and APOL-related leukocyte expressed ligand 2, a proliferation inducing ligand, tumor necrosis factor (ligand) superfamily member 13 transcript variant delta, tumor necrosis factor ligand superfamily member 13 epsilon, tumor necrosis factor ligand superfamily, member 13, tumor necrosis factor-related death ligand-1

**Official Symbol:** TNFSF13

**Accession Number(s):** NP\_003799.1; NP\_742084.1; NP\_742085.1

**Human GeneID(s):** [8741](#) , [407977](#)

**Non-Human GeneID(s):** 69583 (mouse), 287437 (rat)

**Important Comments:** This antibody is expected to recognize all isoforms (alpha, beta, gamma: NP\_003799.1; NP\_742084.1; NP\_742085.1). This antibody also cross-reacts with human, mouse and dog TNFSF12-TNFSF13 protein (GeneID: 407977, 619441, 479484; 36.6kDa, 45.9kDa, ca. 25.9kDa).

### Immunogen

Peptide with sequence C-PRARAKLNLSPHGT, from the C-Terminus (near) of the protein sequence according to NP\_003799.1; NP\_742084.1; NP\_742085.1.

Please note the [peptide](#) is available for sale.

### Purification and Storage

Purified from goat serum by ammonium sulphate precipitation followed by antigen affinity chromatography using the immunizing peptide.

Supplied at 0.5 mg/ml in Tris saline, 0.02% sodium azide, pH7.3 with 0.5% bovine serum albumin.

Aliquot and store at -20°C. Minimize freezing and thawing.

### Applications Tested

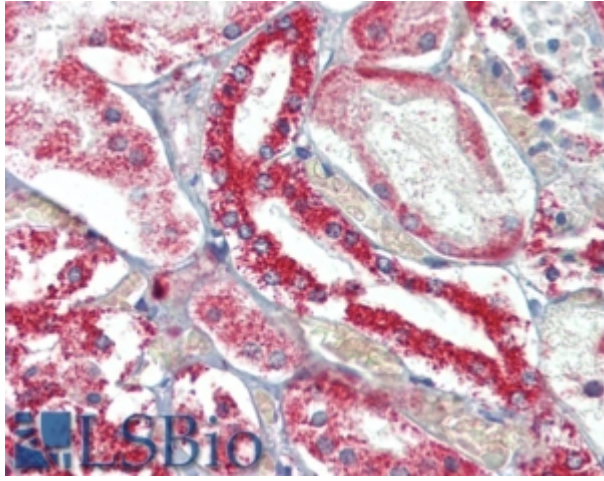
**Peptide ELISA:** antibody detection limit dilution 1:8000.

**IHC:** In paraffin embedded Human Kidney shows heavy cytoplasm staining in the epithelial cells of DCT. Recommended concentration, 5-15µg/ml.

### Species Reactivity

**Tested:** Human

**Expected from sequence similarity:** Human, Mouse, Rat, Dog, Cow



EB09379 (5µg/ml) staining of paraffin embedded Human Kidney. Steamed antigen retrieval with citrate buffer pH 6, AP-staining.