

## UK Office

### Everest Biotech Ltd

Cherwell Innovation Centre  
77 Heyford Park  
Upper Heyford  
Oxfordshire  
OX25 5HD  
UK

Enquiries:

[info@everestbiotech.com](mailto:info@everestbiotech.com)

Sales:

[sales@everestbiotech.com](mailto:sales@everestbiotech.com)

Tech support:

[support@everestbiotech.com](mailto:support@everestbiotech.com)

Tel: +44 (0)1869 238326

[www.everestbiotech.com](http://www.everestbiotech.com)

**Research Use Only. Not for  
diagnostic or therapeutic use.**

## EB12037 - Goat Anti-TNNI2 (aa83-95) Antibody

Size: 100µg specific antibody in 200µl



### Target Protein

**Principal Names:** TNNI2, troponin I type 2 (skeletal, fast), AMCD2B, DA2B, FSSV, fsTnI, fast-twitch skeletal muscle troponin I, troponin I fast twitch 2, troponin I, fast skeletal muscle, troponin I, fast-twitch isoform, troponin I, fast-twitch skeletal muscle isoform, troponin I, skeletal, fast

**Official Symbol:** TNNI2

**Accession Number(s):** NP\_003273.1; NP\_001139313.1

**Human GeneID(s):** [7136](#)

**Important Comments:** This antibody is expected to recognize both reported isoforms (NP\_003273.1; NP\_001139313.1). Reported variants represent identical protein: NP\_001139301.1, NP\_003273.1.

### Immunogen

Peptide with sequence C-EVRVQKTSKELED, from the internal region of the protein sequence according to NP\_003273.1; NP\_001139313.1.

Please note the [peptide](#) is available for sale.

### Purification and Storage

Purified from goat serum by ammonium sulphate precipitation followed by antigen affinity chromatography using the immunizing peptide.

Supplied at 0.5 mg/ml in Tris saline, 0.02% sodium azide, pH7.3 with 0.5% bovine serum albumin.

Aliquot and store at -20°C. Minimize freezing and thawing.

### Applications Tested

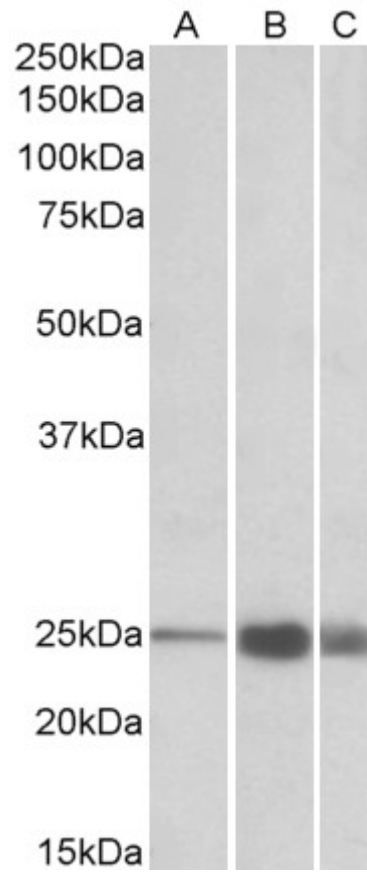
**Peptide ELISA:** antibody detection limit dilution 1:8000.

**Western blot:** Approx 25kDa band observed in Human, Mouse and Rat Skeletal Muscle lysates (calculated MW of 21.3kDa according to NP\_003273.1). Recommended concentration: 1-3µg/ml.

### Species Reactivity

**Tested:** Human, Mouse, Rat

**Expected from sequence similarity:** Human



EB12037 (1 $\mu$ g/ml) staining of Human (A), Mouse(B) and Rat (C) Skeletal Muscle lysate (35 $\mu$ g protein in RIPA buffer). Primary incubation was 1 hour. Detected by chemiluminescence.