



UK Office

Everest Biotech Ltd

Cherwell Innovation Centre
77 Heyford Park
Upper Heyford
Oxfordshire
OX25 5HD
UK

Enquiries:

info@everestbiotech.com

Sales:

sales@everestbiotech.com

Tech support:

support@everestbiotech.com

Tel: +44 (0)1869 238326

www.everestbiotech.com

**Research Use Only. Not for
diagnostic or therapeutic use.**

EB08388 - Goat Anti-TOM1L1 / SRCASM Antibody

Size: 100µg specific antibody in 200µl



Target Protein

Principal Names: TOM1L1, SRCASM, target of myb1 (chicken)-like 1, Src activating and signaling molecule, target of myb 1-like 1, target of myb1-like 1

Official Symbol: TOM1L1

Accession Number(s): NP_005477.2; NP_001308102.1; NP_001308103.1

Human GeneID(s): [10040](#)

Immunogen

Peptide with sequence C-EQNKNQKEATNTTSE, from the internal region of the protein sequence according to NP_005477.2; NP_001308102.1; NP_001308103.1.

Please note the [peptide](#) is available for sale.

Purification and Storage

Purified from goat serum by ammonium sulphate precipitation followed by antigen affinity chromatography using the immunizing peptide.

Supplied at 0.5 mg/ml in Tris saline, 0.02% sodium azide, pH7.3 with 0.5% bovine serum albumin.

Aliquot and store at -20°C. Minimize freezing and thawing.

Applications Tested

Peptide ELISA: antibody detection limit dilution 1:64000.

Western blot: This antibody was observed to recognize variations of bands/isoforms at approx. 37kDa, 45kDa, 50kDa, 55kDa and 60kDa in lysates of cell lines HEK293, A431 and HeLa, and in Human Cerebellum lysates (calculated MW of 38.7kDa according to NP_001308102.1, 44.3kDa according to NP_001308103.1 and 53.0kDa according to NP_005477.2). All bands were blocked by incubation with the immunizing peptide; please refer to WB images for details. Recommended concentration: 1-2µg/ml. Primary incubation 1 hour at room temperature.

Positive Control: A batch specific positive control lysate is available for this product.

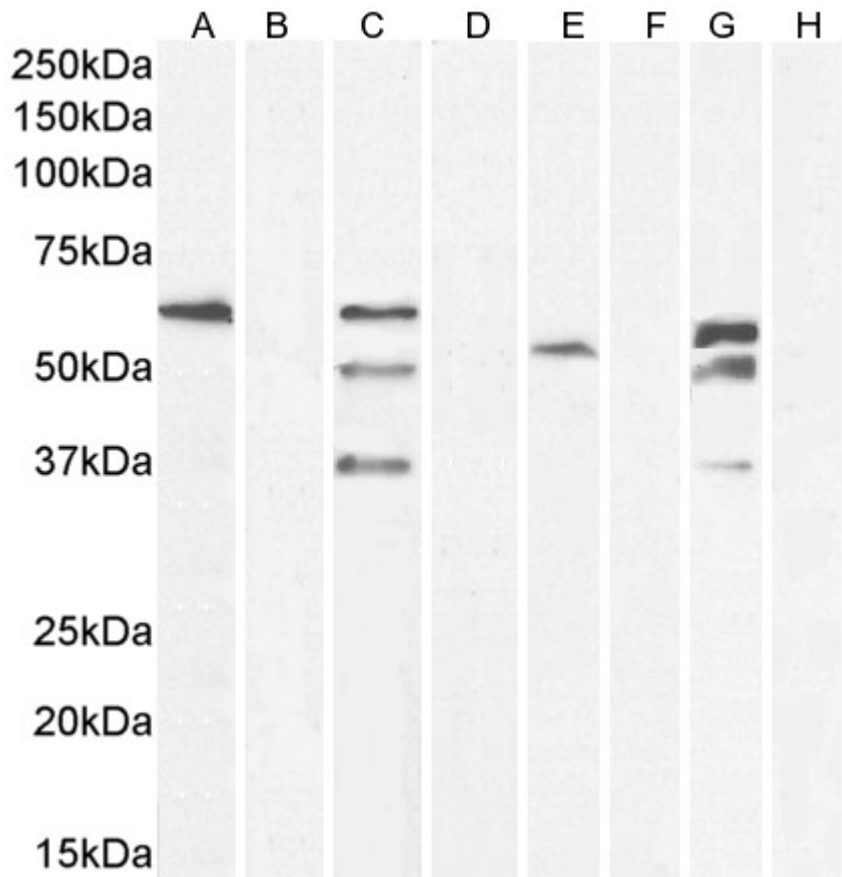
Immunofluorescence: Strong expression of the protein seen in the cytoplasm of HeLa cells. Recommended concentration: 10µg/ml.

Flow Cytometry: Flow cytometric analysis of HeLa cells. Recommended concentration: 10ug/ml.

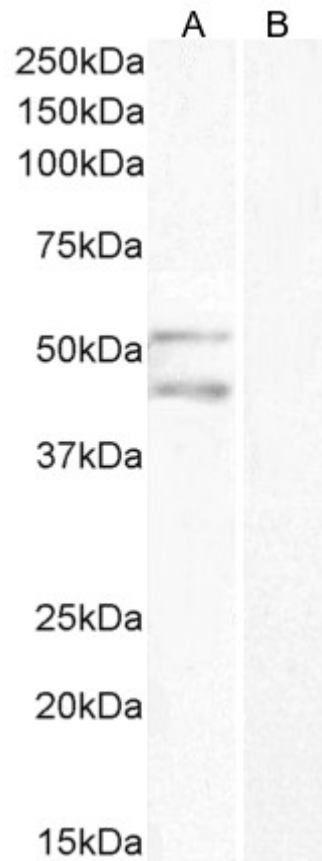
Species Reactivity

Tested: Human

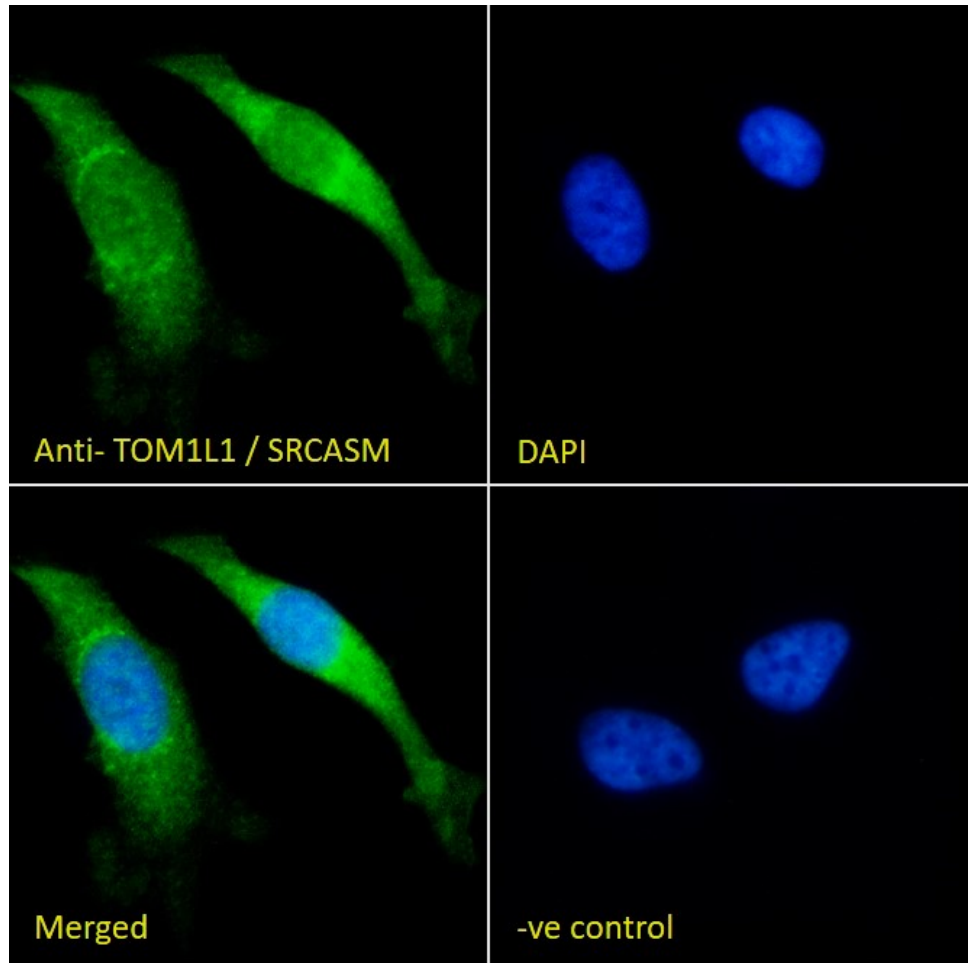
Expected from sequence similarity: Human



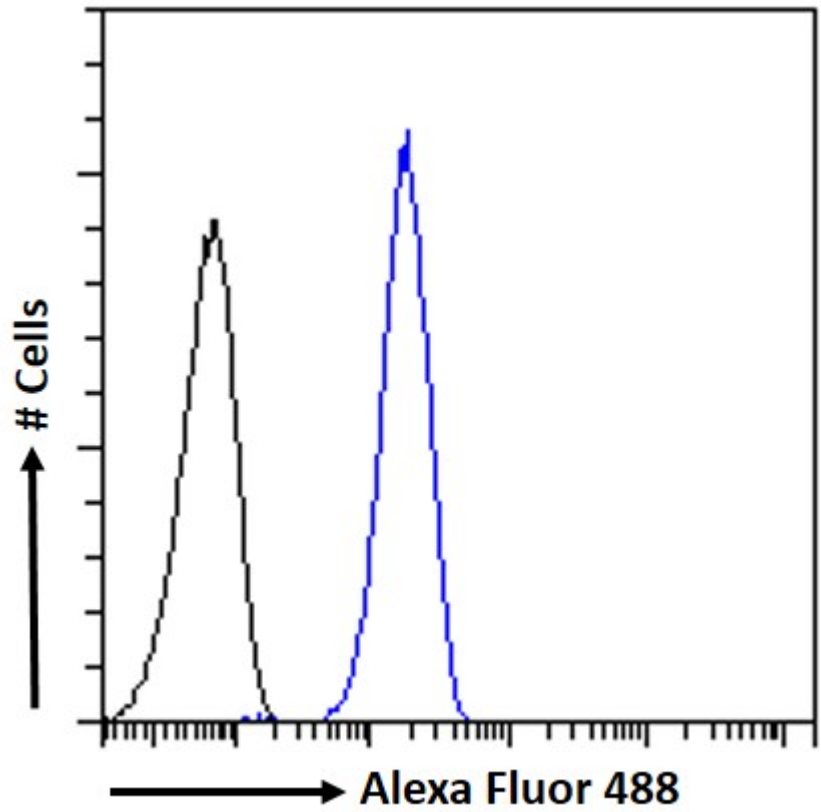
EB08388 (1ug/ml) staining of A431 lysate 1 (A) + peptide (B), A431 lysate 2 (C) + peptide (D), HEK293 (E) + peptide (F), and HEL (G) + peptide (H) cell lysate (35µg protein in RIPA buffer). Detected by chemiluminescence.



EB08388 (1µg/ml) staining of Human Cerebellum lysate (35µg protein in RIPA buffer). Detected by chemiluminescence.



EB08388 Immunofluorescence analysis of paraformaldehyde fixed HeLa cells, permeabilized with 0.15% Triton. Primary incubation 1hr (10ug/ml) followed by Alexa Fluor 488 secondary antibody (2ug/ml), showing cytoplasmic staining. The nuclear stain is DAPI (blue). Negative control: Unimmunized goat IgG (10ug/ml) followed by Alexa Fluor 488 secondary antibody (2ug/ml).



EB08388 Flow cytometric analysis of paraformaldehyde fixed HeLa cells (blue line), permeabilized with 0.5% Triton. Primary incubation 1hr (10ug/ml) followed by Alexa Fluor 488 secondary antibody (1ug/ml). IgG control: Unimmunized goat IgG (black line) followed by Alexa Fluor 488 secondary antibody.