



## UK Office

### Everest Biotech Ltd

Cherwell Innovation Centre  
77 Heyford Park  
Upper Heyford  
Oxfordshire  
OX25 5HD  
UK

Enquiries:

[info@everestbiotech.com](mailto:info@everestbiotech.com)

Sales:

[sales@everestbiotech.com](mailto:sales@everestbiotech.com)

Tech support:

[support@everestbiotech.com](mailto:support@everestbiotech.com)

Tel: +44 (0)1869 238326

Fax: +44 (0)1869 238327

## US Office

### Everest Biotech c/o Abcore

405 Maple Street, Suite A106  
Ramona,  
CA 92065  
USA

Inquiries:

[info@everestbiotech.com](mailto:info@everestbiotech.com)

Sales:

[usasales@everestbiotech.com](mailto:usasales@everestbiotech.com)

Tech support:

[support@everestbiotech.com](mailto:support@everestbiotech.com)

Tel: 888-320-4628 (toll-free)

Fax: 888-841-9041

[www.everestbiotech.com](http://www.everestbiotech.com)

**Research Use Only. Not for  
diagnostic or therapeutic use.**

## EB09805 - Goat Anti-TOMM40 Antibody

Size: 100µg specific antibody in 200µl



### Target Protein

**Principal Names:** C19orf1, D19S1177E, mitochondrial outer membrane protein, PEREC1, PER-EC1, TOM40, translocase of outer mitochondrial membrane 40, translocase of outer mitochondrial membrane 40 homolog (yeast), TOMM40

**Official Symbol:** TOMM40

**Accession Number(s):** NP\_006105.1

**Human GeneID(s):** [10452](#)

**Non-Human GeneID(s):** 53333 (mouse), 308416 (rat)

**Important Comments:** Reported variants represent identical protein: NP\_001122389.1, NP\_001122388.1, NP\_006105.1.

### Immunogen

Peptide with sequence C-HTVALSTIGESNYH, from the internal region of the protein sequence according to NP\_006105.1.

Please note the [peptide](#) is available for sale.

### Purification and Storage

Purified from goat serum by ammonium sulphate precipitation followed by antigen affinity chromatography using the immunizing peptide.

Supplied at 0.5 mg/ml in Tris saline, 0.02% sodium azide, pH7.3 with 0.5% bovine serum albumin.

Aliquot and store at -20°C. Minimize freezing and thawing.

### Applications Tested

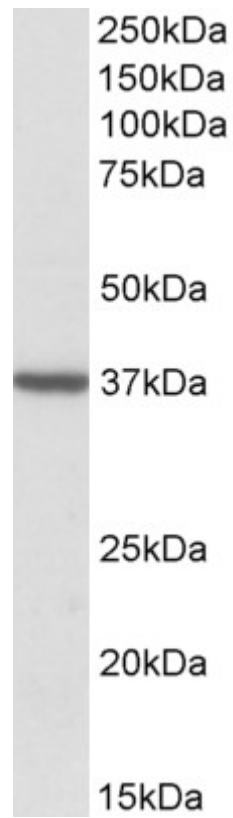
**Peptide ELISA:** antibody detection limit dilution 1:16000.

**Western blot:** Approx 37kDa band observed in Human Brain (Cerebellum and Frontal Cortex) lysates (calculated MW of 37.9kDa according to NP\_006105.1). Recommended concentration: 1-3µg/ml. Primary incubation was 1 hour.

### Species Reactivity

**Tested:** Human

**Expected from sequence similarity:** Human, Mouse, Rat, Dog, Cow



EB09805 (2 $\mu$ g/ml) staining of Human Frontal Cortex lysate (35 $\mu$ g protein in RIPA buffer). Detected by chemiluminescence.