



UK Office

Everest Biotech Ltd

Cherwell Innovation Centre
77 Heyford Park
Upper Heyford
Oxfordshire
OX25 5HD
UK

Enquiries:

info@everestbiotech.com

Sales:

sales@everestbiotech.com

Tech support:

support@everestbiotech.com

Tel: +44 (0)1869 238326

Fax: +44 (0)1869 238327

US Office

Everest Biotech c/o Abcore

405 Maple Street, Suite A106
Ramona,
CA 92065
USA

Inquiries:

info@everestbiotech.com

Sales:

usasales@everestbiotech.com

Tech support:

support@everestbiotech.com

Tel: 888-320-4628 (toll-free)

Fax: 888-841-9041

www.everestbiotech.com

**Research Use Only. Not for
diagnostic or therapeutic use.**

EB08024 - Goat Anti-TPD52 Antibody

Size: 100µg specific antibody in 200µl



Target Protein

Principal Names: TPD52, tumor protein D52, D52, N8L, PC-1, PrLZ, hD52, PC1/MRPS28 fusion protein, prostate and colon associated protein

Official Symbol: TPD52

Accession Number(s): NP_001020423.1 ; NP_001020424.1; NP_005070.1

Human GeneID(s): [7163](#)

Important Comments: This antibody is expected to recognise all three reported isoforms (NP_001020423.1, NP_001020424.1 and NP_005070.1).

Immunogen

Peptide with sequence C-TEPLPEKTQES, from the C Terminus of the protein sequence according to NP_001020423.1 ; NP_001020424.1; NP_005070.1.

Please note the [peptide](#) is available for sale.

Purification and Storage

Purified from goat serum by ammonium sulphate precipitation followed by antigen affinity chromatography using the immunizing peptide.

Supplied at 0.5 mg/ml in Tris saline, 0.02% sodium azide, pH7.3 with 0.5% bovine serum albumin.

Aliquot and store at -20°C. Minimize freezing and thawing.

Applications Tested

Peptide ELISA: antibody detection limit dilution 1:8000.

Western blot: Approx 26-28kDa band observed in Human Lymph Node and Human Kidney lysates (calculated MW of 24.3kDa according to NP_001020423.1). The observed molecular weight corresponds to earlier findings in literature with different antibodies (Tiacchi et al , Blood. 2005 Apr 1;105(7):2812-20.; PMID: 15576473). Recommended concentration: 1-3µg/ml. Primary incubation was 1 hour.

IHC: Paraffin embedded Human Spleen. Recommended concentration: 3.75µg/ml.

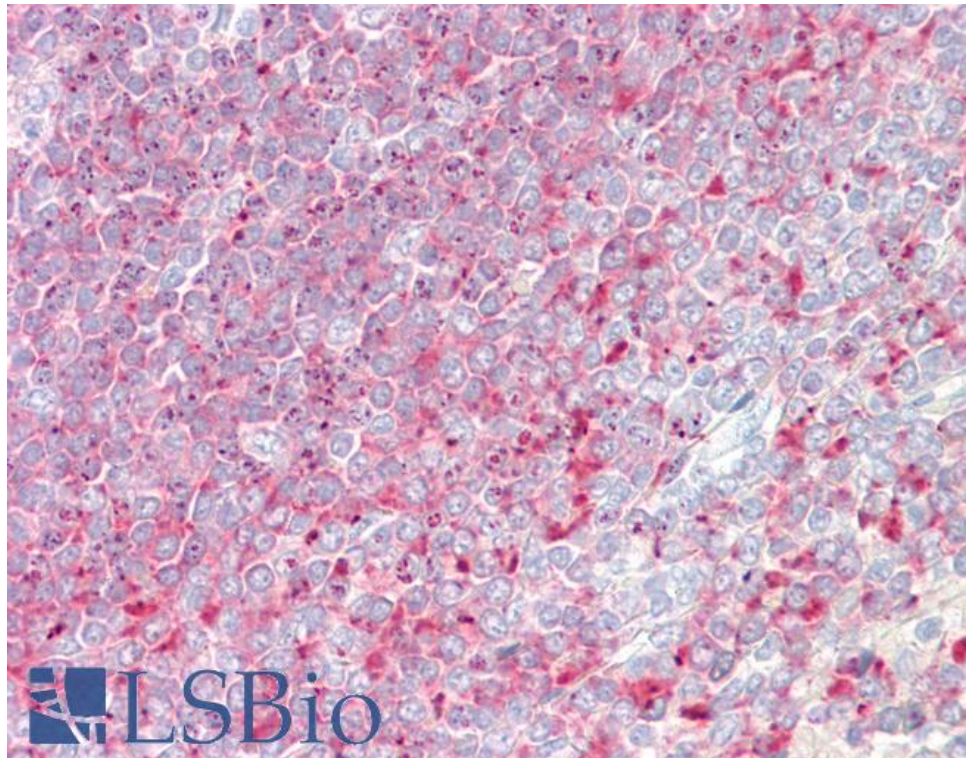
Species Reactivity

Tested: Human

Expected from sequence similarity: Human



EB08024 (1 μ g/ml) staining of Human Lymph Node lysate (35 μ g protein in RIPA buffer). Detected by chemiluminescence.



EB08024 (3.75 μ g/ml) staining of paraffin embedded Human Spleen. Steamed antigen retrieval with citrate buffer pH 6, AP-staining.