



## UK Office

### Everest Biotech Ltd

Cherwell Innovation Centre  
77 Heyford Park  
Upper Heyford  
Oxfordshire  
OX25 5HD  
UK

Enquiries:

[info@everestbiotech.com](mailto:info@everestbiotech.com)

Sales:

[sales@everestbiotech.com](mailto:sales@everestbiotech.com)

Tech support:

[support@everestbiotech.com](mailto:support@everestbiotech.com)

Tel: +44 (0)1869 238326

[www.everestbiotech.com](http://www.everestbiotech.com)

**Research Use Only. Not for  
diagnostic or therapeutic use.**

## EB08026 - Goat Anti-TPD52L1 / D53 Antibody

Size: 100µg specific antibody in 200µl



### Target Protein

**Principal Names:** TPD52L1, hD53, tumor protein D52-like 1, D53, MGC8556, TPD52L2, tumor protein D52-like 2, tumor protein D53

**Official Symbol:** TPD52L1

**Accession Number(s):** NP\_003278.1; NP\_001003395.1 ; NP\_001003396.1; NP\_001003397.1

**Human GeneID(s):** [7164](#)

**Important Comments:** This antibody is expected to recognise isoforms 1, 3 and 4 (NP\_003278.1, NP\_001003396.1 and NP\_001003397.1 resp.).

### Immunogen

Peptide with sequence C-EPLQGTDEDAVASAD, from the internal region of the protein sequence according to NP\_003278.1; NP\_001003395.1 ; NP\_001003396.1; NP\_001003397.1.

Please note the [peptide](#) is available for sale.

### Purification and Storage

Purified from goat serum by ammonium sulphate precipitation followed by antigen affinity chromatography using the immunizing peptide.

Supplied at 0.5 mg/ml in Tris saline, 0.02% sodium azide, pH7.3 with 0.5% bovine serum albumin.

Aliquot and store at -20°C. Minimize freezing and thawing.

### Applications Tested

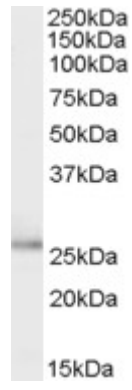
**Peptide ELISA:** antibody detection limit dilution 1:8000.

**Western blot:** Approx 26kDa band observed in Human Breast cancer lysates (calculated MW of 22.5kDa according to NP\_003278.1). Recommended concentration: 0.1-0.3µg/ml. See also our D52 and D54 products.

### Species Reactivity

**Tested:** Human

**Expected from sequence similarity:** Human



EB08026 (0.1 $\mu$ g/ml) staining of Human Breast cancer lysate (35 $\mu$ g protein in RIPA buffer). Primary incubation was 1 hour. Detected by chemiluminescence.