



## UK Office

### Everest Biotech Ltd

Cherwell Innovation Centre  
77 Heyford Park  
Upper Heyford  
Oxfordshire  
OX25 5HD  
UK

Enquiries:

[info@everestbiotech.com](mailto:info@everestbiotech.com)

Sales:

[sales@everestbiotech.com](mailto:sales@everestbiotech.com)

Tech support:

[support@everestbiotech.com](mailto:support@everestbiotech.com)

Tel: +44 (0)1869 238326

Fax: +44 (0)1869 238327

## US Office

### Everest Biotech c/o Abcore

405 Maple Street, Suite A106  
Ramona,  
CA 92065  
USA

Inquiries:

[info@everestbiotech.com](mailto:info@everestbiotech.com)

Sales:

[usasales@everestbiotech.com](mailto:usasales@everestbiotech.com)

Tech support:

[support@everestbiotech.com](mailto:support@everestbiotech.com)

Tel: 888-320-4628 (toll-free)

Fax: 888-841-9041

[www.everestbiotech.com](http://www.everestbiotech.com)

**Research Use Only. Not for  
diagnostic or therapeutic use.**

## EB07380 - Goat Anti-TPTE / PTEN2 Antibody

Size: 100µg specific antibody in 200µl



### Target Protein

**Principal Names:** TPTE, PTEN2, transmembrane phosphatase with tensin homology, tensin, putative protein-tyrosine phosphatase

**Official Symbol:** TPTE

**Accession Number(s):** NP\_954870.2; NP\_954868.1; NP\_954869.1

**Human GeneID(s):** [7179](#)

**Important Comments:** This antibody is expected to recognise all reported isoforms (NP\_954870.2, NP\_954868.1 and NP\_954869.1). It may cross-react with the almost identical TPTE2 (GeneID 93492; NP\_570141.2, NP\_954864.1, NP\_954863.1).

### Immunogen

Peptide with sequence C-ERRTDKTHSEKFQ, from the internal region of the protein sequence according to NP\_954870.2; NP\_954868.1; NP\_954869.1.

Please note the [peptide](#) is available for sale.

### Purification and Storage

Purified from goat serum by ammonium sulphate precipitation followed by antigen affinity chromatography using the immunizing peptide.

Supplied at 0.5 mg/ml in Tris saline, 0.02% sodium azide, pH7.3 with 0.5% bovine serum albumin.

Aliquot and store at -20°C. Minimize freezing and thawing.

### Applications Tested

**Peptide ELISA:** antibody detection limit dilution 1:16000.

**Western blot:** Approx 50-55kDa band observed in Human Testis lysates (calculated MW of 60.2kDa according to NP\_954869.1). Recommended concentration: 1-3µg/ml.

**IHC:** Paraffin embedded Human Adrenal Gland. Recommended concentration: 2.5µg/ml.

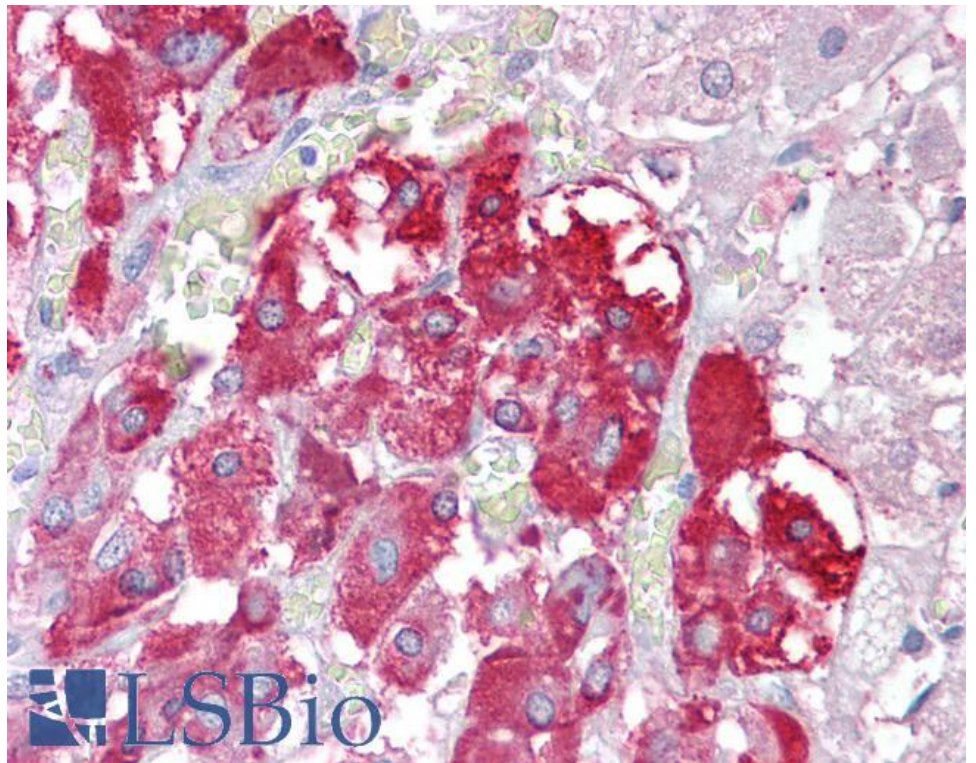
### Species Reactivity

**Tested:** Human

**Expected from sequence similarity:** Human



EB07380 (1 $\mu$ g/ml) staining of Human Testis lysate (35 $\mu$ g protein in RIPA buffer). Primary incubation was 1 hour. Detected by chemiluminescence.



EB07380 (2.5 $\mu$ g/ml) staining of paraffin embedded Human Adrenal Gland. Steamed antigen retrieval with citrate buffer pH 6, AP-staining.