



UK Office

Everest Biotech Ltd

Cherwell Innovation Centre
77 Heyford Park
Upper Heyford
Oxfordshire
OX25 5HD
UK

Enquiries:

info@everestbiotech.com

Sales:

sales@everestbiotech.com

Tech support:

support@everestbiotech.com

Tel: +44 (0)1869 238326

Fax: +44 (0)1869 238327

US Office

Everest Biotech c/o Abcore

405 Maple Street, Suite A106
Ramona,
CA 92065
USA

Inquiries:

info@everestbiotech.com

Sales:

usasales@everestbiotech.com

Tech support:

support@everestbiotech.com

Tel: 888-320-4628 (toll-free)

Fax: 888-841-9041

www.everestbiotech.com

**Research Use Only. Not for
diagnostic or therapeutic use.**

EB08715 - Goat Anti-TRABID / ZRANB1 Antibody

Size: 100µg specific antibody in 200µl



Target Protein

Principal Names: ZRANB1, TRABID, zinc finger, RAN-binding domain containing 1, DKFZp762P2216, TRAF-binding protein domain, zinc finger, RAN-binding domain containing 1 protein

Official Symbol: ZRANB1

Accession Number(s): NP_060050.2

Human GeneID(s): [54764](#)

Non-Human GeneID(s): 360216 (mouse)

Immunogen

Peptide with sequence KWLDRYRQIRPCTS, from the C Terminus of the protein sequence according to NP_060050.2.

Please note the [peptide](#) is available for sale.

Purification and Storage

Purified from goat serum by ammonium sulphate precipitation followed by antigen affinity chromatography using the immunizing peptide.

Supplied at 0.5 mg/ml in Tris saline, 0.02% sodium azide, pH7.3 with 0.5% bovine serum albumin.

Aliquot and store at -20°C. Minimize freezing and thawing.

Applications Tested

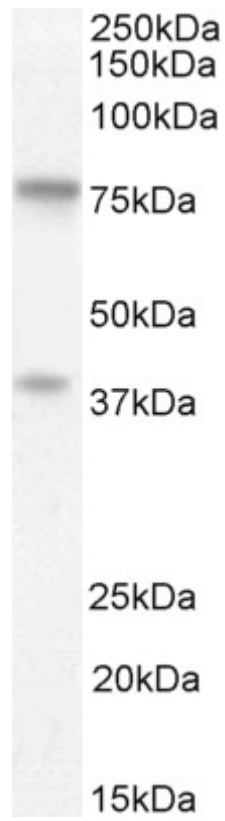
Peptide ELISA: antibody detection limit dilution 1:4000.

Western blot: Approx. 80kDa bands observed in Human Cerebellum lysates (calculated MW of 81.0kDa according to NP_060050.2). An additional band of unknown identity was also consistently observed at 38kDa. Recommended concentration: 0.5-2µg/ml. Primary incubation 1 hour at room temperature.

Species Reactivity

Tested: Human

Expected from sequence similarity: Human, Mouse, Rat, Dog, Pig, Cow



EB08715 (1µg/ml) staining of Human Cerebellum lysate (35µg protein in RIPA buffer). Detected by chemiluminescence