



## UK Office

### Everest Biotech Ltd

Cherwell Innovation Centre  
77 Heyford Park  
Upper Heyford  
Oxfordshire  
OX25 5HD  
UK

Enquiries:

[info@everestbiotech.com](mailto:info@everestbiotech.com)

Sales:

[sales@everestbiotech.com](mailto:sales@everestbiotech.com)

Tech support:

[support@everestbiotech.com](mailto:support@everestbiotech.com)

Tel: +44 (0)1869 238326

[www.everestbiotech.com](http://www.everestbiotech.com)

**Research Use Only. Not for  
diagnostic or therapeutic use.**

## EB07170 - Goat Anti-TRAF1 Antibody

Size: 100µg specific antibody in 200µl



### Target Protein

**Principal Names:** TRAF1, TNF receptor-associated factor 1, EBI6, MGC:10353, Epstein-Bar virus-induced protein 6

**Official Symbol:** TRAF1

**Accession Number(s):** NP\_005649.1

**Human GeneID(s):** [7185](#)

**Non-Human GeneID(s):** 22029 (mouse)

### Immunogen

Peptide with sequence C-KLQSPKHAYVKDD, from the C Terminus of the protein sequence according to NP\_005649.1.

Please note the [peptide](#) is available for sale.

### Purification and Storage

Purified from goat serum by ammonium sulphate precipitation followed by antigen affinity chromatography using the immunizing peptide.

Supplied at 0.5 mg/ml in Tris saline, 0.02% sodium azide, pH7.3 with 0.5% bovine serum albumin.

Aliquot and store at -20°C. Minimize freezing and thawing.

### Applications Tested

**Peptide ELISA:** antibody detection limit dilution 1:16000.

**Western blot:** Approx 50-55kDa band observed in lysates of monocytic leukemia cell line U937 (calculated MW of 46.2kDa according to NP\_005649.1). The observed molecular weight corresponds to earlier findings in literature with different antibodies (Pryhuber et al, Am J Respir Cell Mol Biol. 2000 Feb;22(2):150-6. PMID: 10657935). Recommended concentration: 0.3-1.0µg/ml.

**IHC:** Paraffin embedded Human Thymus and Small Intestine. Recommended concentration: 2.5µg/ml.

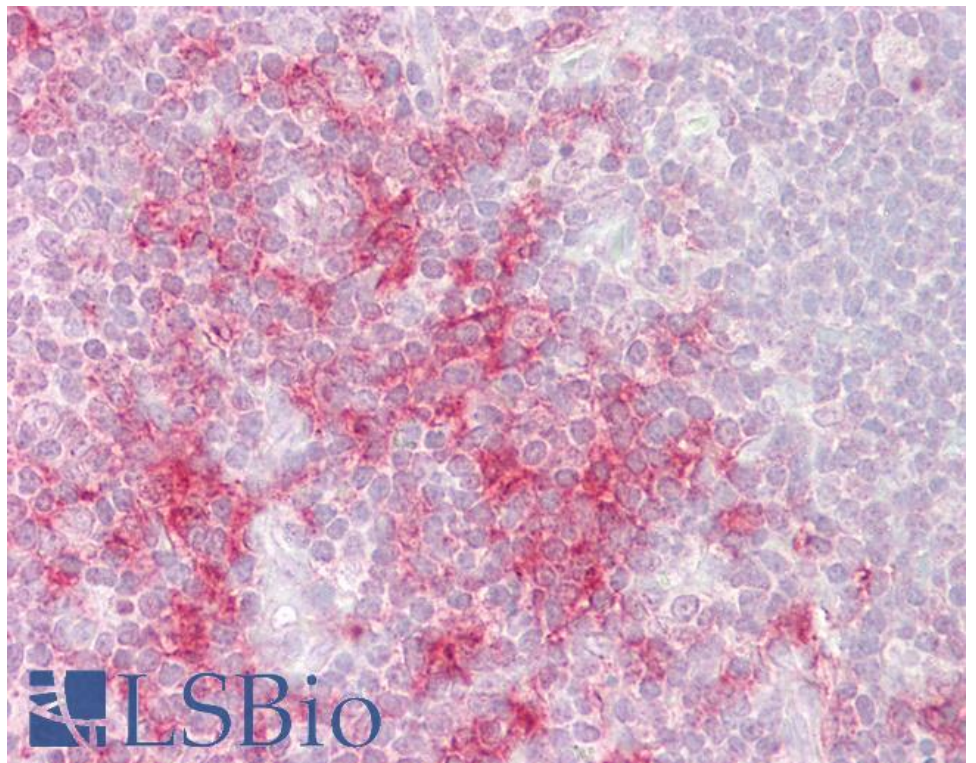
### Species Reactivity

**Tested:** Human

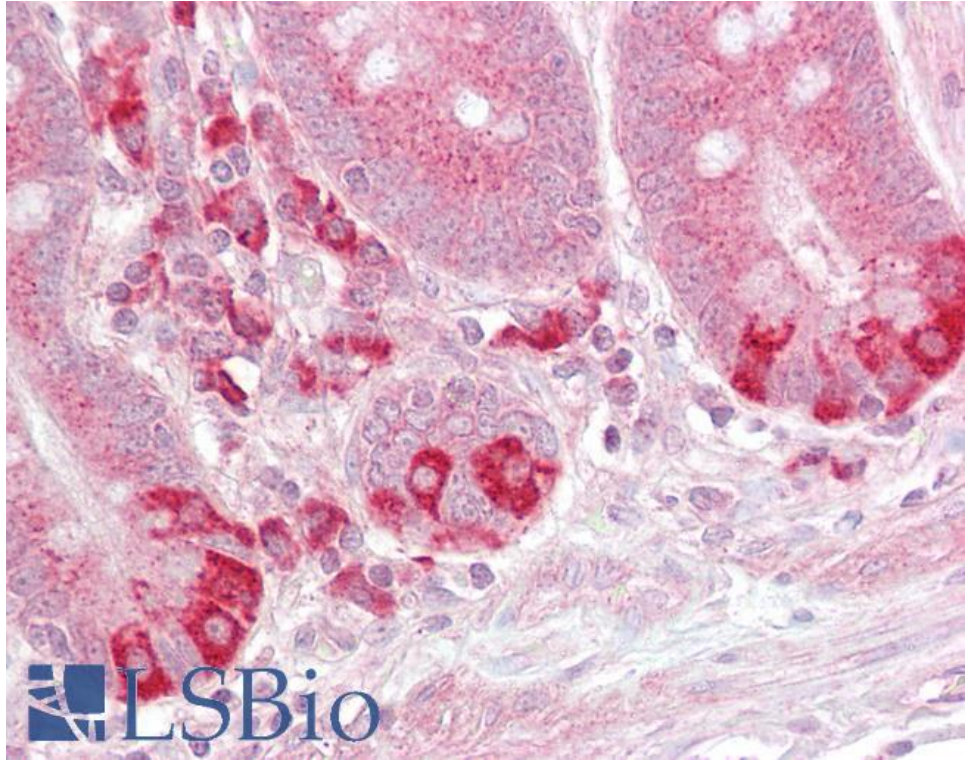
**Expected from sequence similarity:** Human, Mouse

250kDa  
150kDa  
100kDa  
75kDa  
50kDa  
37kDa  
25kDa  
20kDa  
15kDa  
10kDa

EB07170 (0.5µg/ml) staining of U937 cell lysate (35µg protein in RIPA buffer). Primary incubation was 1 hour.  
Detected by chemiluminescence.



EB07170 (2.5µg/ml) staining of paraffin embedded Human Thymus. Steamed antigen retrieval with citrate buffer pH 6, AP-staining.



EB07170 (2.5µg/ml) staining of paraffin embedded Human Small Intestine. Steamed antigen retrieval with citrate buffer pH 6, AP-staining.