



UK Office

Everest Biotech Ltd

Cherwell Innovation Centre
77 Heyford Park
Upper Heyford
Oxfordshire
OX25 5HD
UK

Enquiries:

info@everestbiotech.com

Sales:

sales@everestbiotech.com

Tech support:

support@everestbiotech.com

Tel: +44 (0)1869 238326

Fax: +44 (0)1869 238327

US Office

Everest Biotech c/o Abcore

405 Maple Street, Suite A106
Ramona,
CA 92065
USA

Inquiries:

info@everestbiotech.com

Sales:

usasales@everestbiotech.com

Tech support:

support@everestbiotech.com

Tel: 888-320-4628 (toll-free)

Fax: 888-841-9041

www.everestbiotech.com

**Research Use Only. Not for
diagnostic or therapeutic use.**

EB07170 - Goat Anti-TRAF1 Antibody

Size: 100µg specific antibody in 200µl



Target Protein

Principal Names: TRAF1, TNF receptor-associated factor 1, EBI6, MGC:10353, Epstein-Bar virus-induced protein 6

Official Symbol: TRAF1

Accession Number(s): NP_005649.1

Human GeneID(s): [7185](#)

Non-Human GeneID(s): 22029 (mouse)

Immunogen

Peptide with sequence C-KLQSPKHAYVKDD, from the C Terminus of the protein sequence according to NP_005649.1.

Please note the [peptide](#) is available for sale.

Purification and Storage

Purified from goat serum by ammonium sulphate precipitation followed by antigen affinity chromatography using the immunizing peptide.

Supplied at 0.5 mg/ml in Tris saline, 0.02% sodium azide, pH7.3 with 0.5% bovine serum albumin.

Aliquot and store at -20°C. Minimize freezing and thawing.

Applications Tested

Peptide ELISA: antibody detection limit dilution 1:16000.

Western blot: Approx 50-55kDa band observed in lysates of monocytic leukemia cell line U937 (calculated MW of 46.2kDa according to NP_005649.1). The observed molecular weight corresponds to earlier findings in literature with different antibodies (Pryhuber et al, Am J Respir Cell Mol Biol. 2000 Feb;22(2):150-6. PMID: 10657935). Recommended concentration: 0.3-1.0µg/ml.

IHC: Paraffin embedded Human Thymus and Small Intestine. Recommended concentration: 2.5µg/ml.

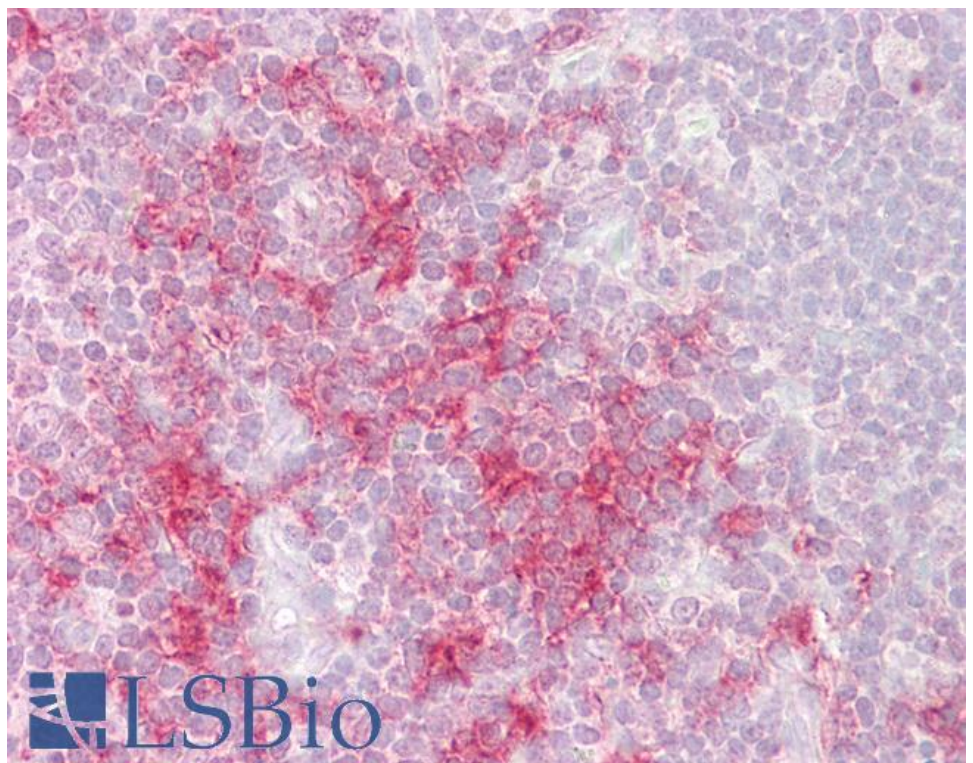
Species Reactivity

Tested: Human

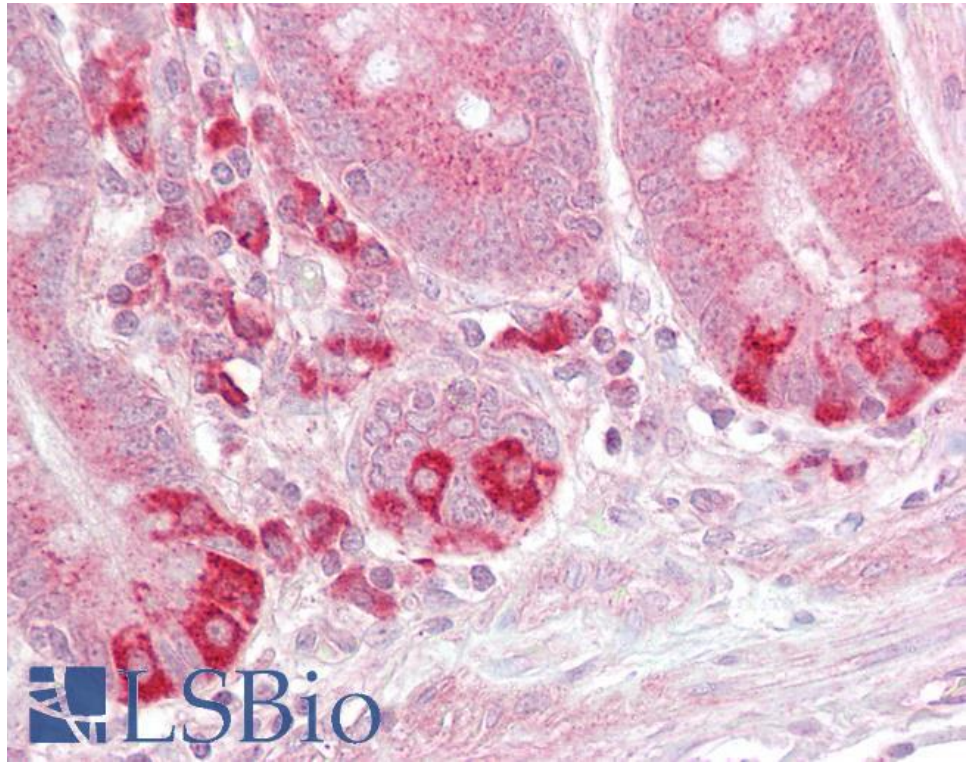
Expected from sequence similarity: Human, Mouse

250kDa
150kDa
100kDa
75kDa
50kDa
37kDa
25kDa
20kDa
15kDa
10kDa

EB07170 (0.5µg/ml) staining of U937 cell lysate (35µg protein in RIPA buffer). Primary incubation was 1 hour.
Detected by chemiluminescence.



EB07170 (2.5µg/ml) staining of paraffin embedded Human Thymus. Steamed antigen retrieval with citrate buffer pH 6, AP-staining.



EB07170 (2.5µg/ml) staining of paraffin embedded Human Small Intestine. Steamed antigen retrieval with citrate buffer pH 6, AP-staining.