



UK Office

Everest Biotech Ltd

Cherwell Innovation Centre
77 Heyford Park
Upper Heyford
Oxfordshire
OX25 5HD
UK

Enquiries:

info@everestbiotech.com

Sales:

sales@everestbiotech.com

Tech support:

support@everestbiotech.com

Tel: +44 (0)1869 238326

Fax: +44 (0)1869 238327

US Office

Everest Biotech c/o Abcore

405 Maple Street, Suite A106
Ramona,
CA 92065
USA

Inquiries:

info@everestbiotech.com

Sales:

usasales@everestbiotech.com

Tech support:

support@everestbiotech.com

Tel: 888-320-4628 (toll-free)

Fax: 888-841-9041

www.everestbiotech.com

**Research Use Only. Not for
diagnostic or therapeutic use.**

EB11952 - Goat Anti-Transferrin receptor 1 Antibody

Size: 100µg specific antibody in 200µl



Target Protein

Principal Names: TFRC, transferrin receptor (p90, CD71), CD71, T9, TFR, TFR1, TR, TRFR, p90, OTTHUMP00000208523, OTTHUMP00000208524, OTTHUMP00000208525, transferrin receptor protein 1

Official Symbol: TFRC

Accession Number(s): NP_003225.2

Human GeneID(s): [7037](#)

Non-Human GeneID(s): 22042 (mouse), 64678 (rat)

Important Comments: Reported variants represent identical protein: NP_003225.2, NP_001121620.1.

Immunogen

Peptide with sequence TRFSLARQVDGDNH-C, from the N Terminus of the protein sequence according to NP_003225.2.

Please note the [peptide](#) is available for sale.

Purification and Storage

Purified from goat serum by ammonium sulphate precipitation followed by antigen affinity chromatography using the immunizing peptide.

Supplied at 0.5 mg/ml in Tris saline, 0.02% sodium azide, pH7.3 with 0.5% bovine serum albumin.

Aliquot and store at -20°C. Minimize freezing and thawing.

Applications Tested

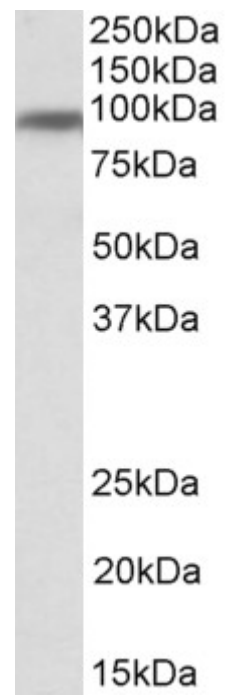
Peptide ELISA: antibody detection limit dilution 1:128000.

Western blot: Approx 90kDa band observed in Human Breast lysates (calculated MW of 84.9kDa according to NP_003225.2). Recommended concentration: 1-3µg/ml.

Species Reactivity

Tested: Human

Expected from sequence similarity: Human, Mouse, Rat, Dog, Pig, Cow



EB11952 (1 μ g/ml) staining of Human Breast lysate (35 μ g protein in RIPA buffer). Primary incubation was 1 hour.
Detected by chemiluminescence.