

## UK Office

### Everest Biotech Ltd

Cherwell Innovation Centre  
77 Heyford Park  
Upper Heyford  
Oxfordshire  
OX25 5HD  
UK

Enquiries:

[info@everestbiotech.com](mailto:info@everestbiotech.com)

Sales:

[sales@everestbiotech.com](mailto:sales@everestbiotech.com)

Tech support:

[support@everestbiotech.com](mailto:support@everestbiotech.com)

Tel: +44 (0)1869 238326

[www.everestbiotech.com](http://www.everestbiotech.com)

**Research Use Only. Not for  
diagnostic or therapeutic use.**

## EB11080 - Goat Anti-Transglutaminase 2 (aa17-29) Antibody

Size: 100µg specific antibody in 200µl



### Target Protein

**Principal Names:** C polypeptide, G-ALPHA-h, GNAH, protein-glutamine gamma-glutamyltransferase 2, protein-glutamine-gamma-glutamyltransferase, TG(C), TG2, TGase C, TGase H, TGase-2, TGase-H, TGC, tissue transglutaminase, transglutaminase 2 (C polypeptide, protein-glutamine-gamma-glutamyltransferase), transglutaminase C, transglutaminase H, transglutaminase-2, TGM2

**Official Symbol:** TGM2

**Accession Number(s):** NP\_004604.2; NP\_945189.1

**Human GeneID(s):** [7052](#)

**Non-Human GeneID(s):** 21817 (mouse), 56083 (rat)

**Important Comments:** This antibody is expected to recognize both reported isoforms (NP\_004604.2; NP\_945189.1)..

### Immunogen

Peptide with sequence NGRDHHTADLCRE, from the N Terminus of the protein sequence according to NP\_004604.2; NP\_945189.1.

Please note the [peptide](#) is available for sale.

### Purification and Storage

Purified from goat serum by ammonium sulphate precipitation followed by antigen affinity chromatography using the immunizing peptide.

Supplied at 0.5 mg/ml in Tris saline, 0.02% sodium azide, pH7.3 with 0.5% bovine serum albumin.

Aliquot and store at -20°C. Minimize freezing and thawing.

### Applications Tested

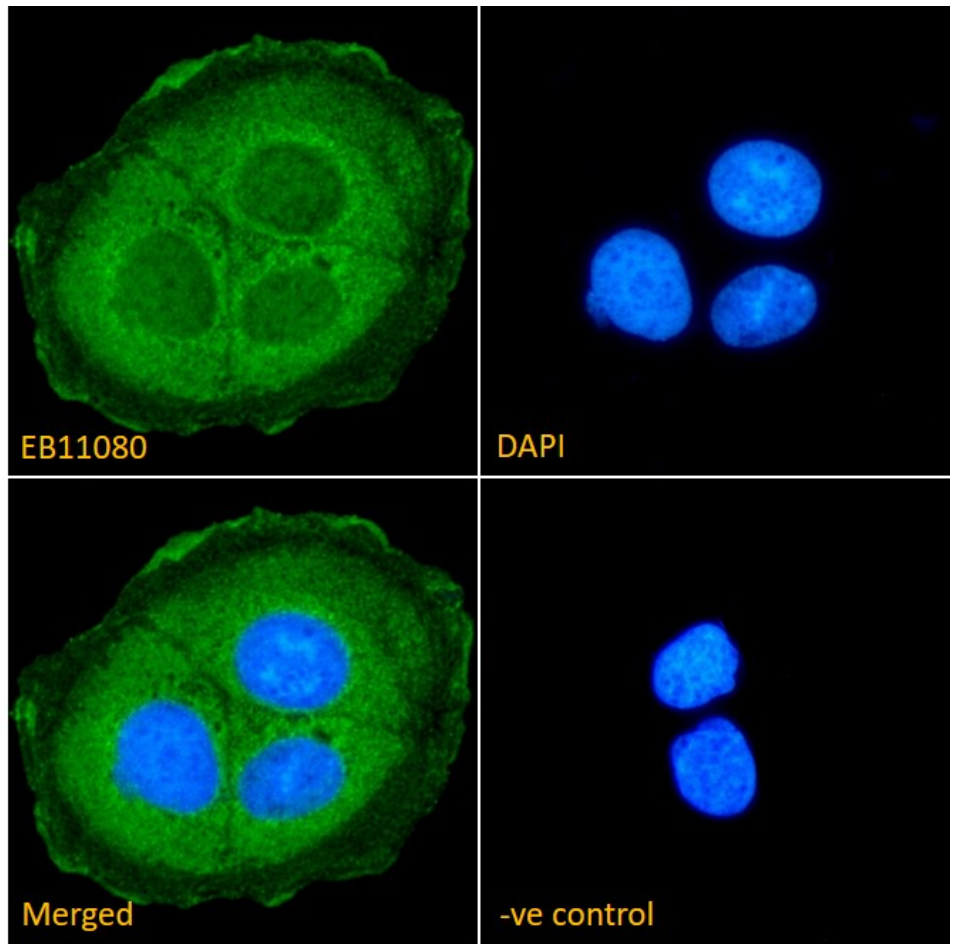
**Peptide ELISA:** antibody detection limit dilution 1:16000.

**Immunofluorescence:** Strong expression of the protein seen in the cytoplasm and membranes of Caco-2 cells. Recommended concentration: 10µg/ml.

### Species Reactivity

**Tested:** Human

**Expected from sequence similarity:** Human, Mouse, Rat, Pig, Cow



EB11080 Immunofluorescence analysis of paraformaldehyde fixed Caco-2. Primary incubation 1hr (1:50 dilution) followed by Alexa Fluor® 488 secondary antibody (1:2000 dilution), showing cytoplasmic, and membrane staining. The nuclear stain is DAPI (blue). Negative control: Anti-Goat IgG followed by Alexa Fluor® 488 secondary antibody.