



## International Office

### Everest Biotech Ltd

Vector Laboratories, Inc.  
6737 Mowry Ave  
Newark, CA 94560  
United States

Customer Service:

[customerservice@vectorlabs.com](mailto:customerservice@vectorlabs.com)

Technical Service:

[technical@vectorlabs.com](mailto:technical@vectorlabs.com)

Tel: +1 (800) 227-6666

[www.everestbiotech.com](http://www.everestbiotech.com)

**Research Use Only. Not for  
diagnostic or therapeutic use.**

## EB11085 - Goat Anti-transglutaminase 4 (aa49-63) Antibody

Size: 100µg specific antibody in 200µl



### Target Protein

**Principal Names:** fibrinolytic, FLJ26776, hTGP, prostate transglutaminase, prostate-specific transglutaminase, protein-glutamine gamma-glutamyltransferase 4, TG(P), TGase P, TGase-4, TGP, transglutaminase 4 (prostate), transglutaminase P, transglutaminase-4, TGM4

**Official Symbol:** TGM4

**Accession Number(s):** NP\_003232.2

**Human GeneID(s):** [7047](#)

### Immunogen

Peptide with sequence C-NQPLQSYHQLKLEFS, from the internal region (near N Terminus) of the protein sequence according to NP\_003232.2.

Please note the [peptide](#) is available for sale.

### Purification and Storage

Purified from goat serum by ammonium sulphate precipitation followed by antigen affinity chromatography using the immunizing peptide.

Supplied at 0.5 mg/ml in Tris saline, 0.02% sodium azide, pH7.3 with 0.5% bovine serum albumin.

Aliquot and store at -20°C. Minimize freezing and thawing.

### Applications Tested

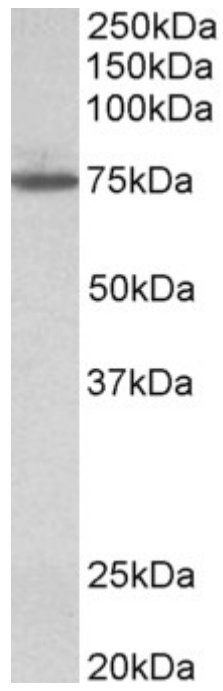
**Peptide ELISA:** antibody detection limit dilution 1:16000.

**Western blot:** Approx 75kDa band observed in lysates of cell line HeLa (calculated MW of 77.1kDa according to NP\_003232.2). Recommended concentration: 1-3µg/ml.

### Species Reactivity

**Tested:** Human

**Expected from sequence similarity:** Human



EB11085 (1 $\mu$ g/ml) staining of HeLa lysate (35 $\mu$ g protein in RIPA buffer). Primary incubation was 1 hour.  
Detected by chemiluminescence.