



## UK Office

### Everest Biotech Ltd

Cherwell Innovation Centre  
77 Heyford Park  
Upper Heyford  
Oxfordshire  
OX25 5HD  
UK

Enquiries:

[info@everestbiotech.com](mailto:info@everestbiotech.com)

Sales:

[sales@everestbiotech.com](mailto:sales@everestbiotech.com)

Tech support:

[support@everestbiotech.com](mailto:support@everestbiotech.com)

Tel: +44 (0)1869 238326

[www.everestbiotech.com](http://www.everestbiotech.com)

**Research Use Only. Not for  
diagnostic or therapeutic use.**

## EB07921 - Goat Anti-TREM2 Antibody

Size: 100µg specific antibody in 200µl



### Target Protein

**Principal Names:** TREM2, triggering receptor expressed on myeloid cells 2, TREM-2, Trem2a, Trem2b, Trem2c, OTTHUMP00000039771, triggering receptor expressed on myeloid cells 2a

**Official Symbol:** TREM2

**Accession Number(s):** NP\_061838.1

**Human GeneID(s):** [54209](#)

### Immunogen

Peptide with sequence C-HGQKPGTHPPSELD, from the C Terminus of the protein sequence according to NP\_061838.1.

Please note the [peptide](#) is available for sale.

### Purification and Storage

Purified from goat serum by ammonium sulphate precipitation followed by antigen affinity chromatography using the immunizing peptide.

Supplied at 0.5 mg/ml in Tris saline, 0.02% sodium azide, pH7.3 with 0.5% bovine serum albumin.

Aliquot and store at -20°C. Minimize freezing and thawing.

### Applications Tested

**Peptide ELISA:** antibody detection limit dilution 1:128000.

**IHC:** In paraffin embedded Human Lung shows staining of alveolar macrophages.

Recommended concentration: 2-4µg/ml.

**Immunofluorescence:** Strong expression of the protein seen in U937 and HepG2 cells.

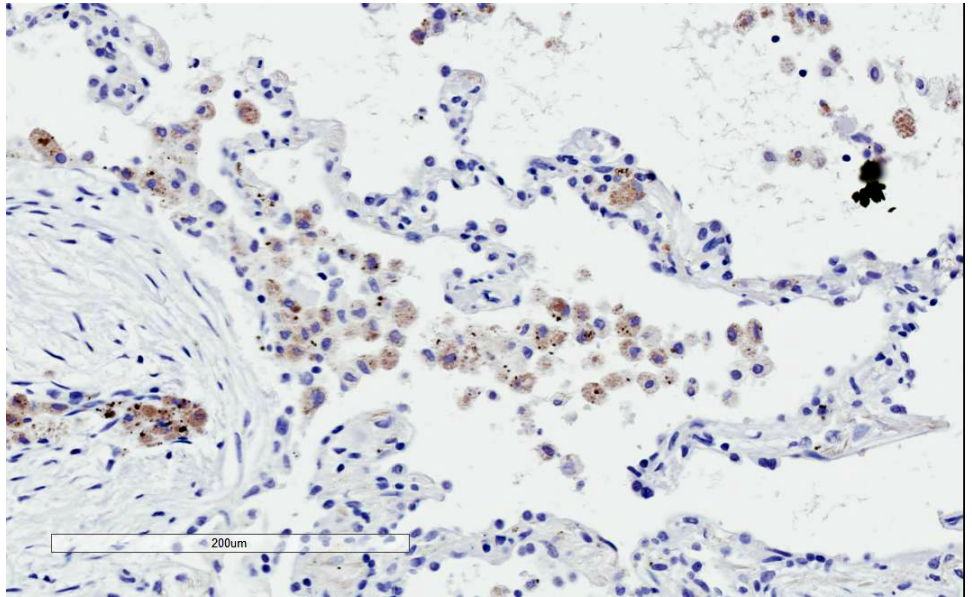
Recommended concentration: 10µg/ml.

**Flow Cytometry:** Flow cytometric analysis of U937 cells. Recommended concentration: 10ug/ml.

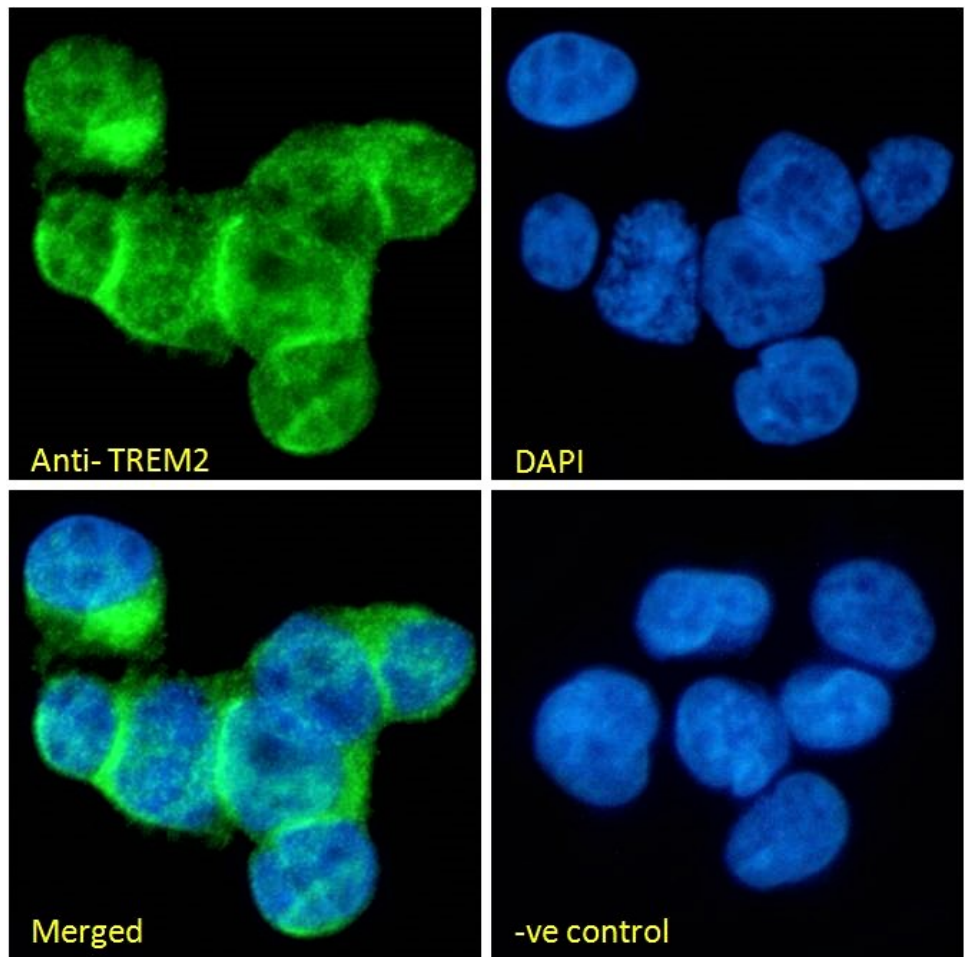
### Species Reactivity

**Tested:** Human

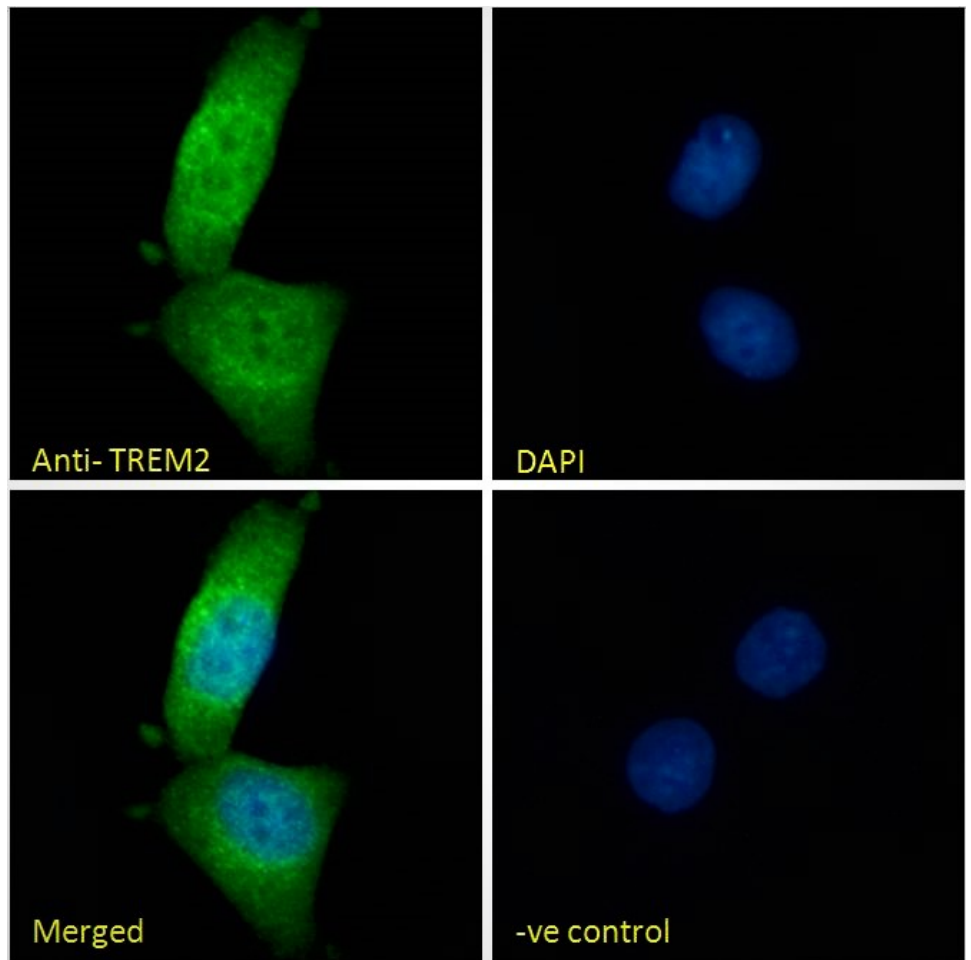
**Expected from sequence similarity:** Human



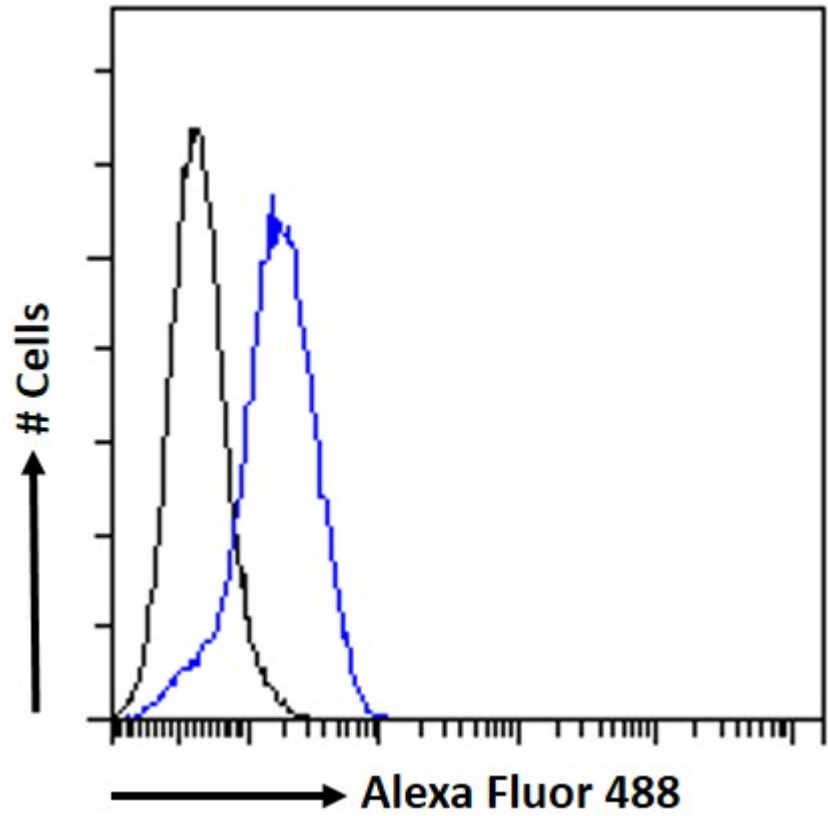
EB07921 (2 $\mu$ g/ml) staining of paraffin embedded Human Lung. Microwaved antigen retrieval with citrate buffer pH 6, HRP-staining.



EB07921 Immunofluorescence analysis of paraformaldehyde fixed U937 cells immobilized on Shifix<sup>TM</sup> coverslip, permeabilized with 0.15% Triton. Primary incubation 1hr (10 $\mu$ g/ml) followed by Alexa Fluor 488 secondary antibody (2 $\mu$ g/ml), showing cytoplasmic and plasma membrane staining. The nuclear stain is DAPI (blue). Negative control: Unimmunized goat IgG (10 $\mu$ g/ml) followed by Alexa Fluor 488 secondary antibody (2 $\mu$ g/ml).



EB07921 Immunofluorescence analysis of paraformaldehyde fixed HepG2 cells, permeabilized with 0.15% Triton. Primary incubation 1hr (10ug/ml) followed by Alexa Fluor 488 secondary antibody (2ug/ml), showing cytoplasmic and some nuclear staining. The nuclear stain is DAPI (blue). Negative control: Unimmunized goat IgG (10ug/ml) followed by Alexa Fluor 488 secondary antibody (2ug/ml).



EB07921 Flow cytometric analysis of paraformaldehyde fixed U937 cells (blue line), permeabilized with 0.5% Triton. Primary incubation 1hr (10ug/ml) followed by Alexa Fluor 488 secondary antibody (1ug/ml). IgG control: Unimmunized goat IgG (black line) followed by Alexa Fluor 488 secondary antibody.