



International Office

Everest Biotech Ltd

Vector Laboratories, Inc.
6737 Mowry Ave
Newark, CA 94560
United States

Customer Service:

customerservice@vectorlabs.com

Technical Service:

technical@vectorlabs.com

Tel: +1 (800) 227-6666

www.everestbiotech.com

**Research Use Only. Not for
diagnostic or therapeutic use.**

EB08483 - Goat Anti-TRIB1 Antibody

Size: 100µg specific antibody in 200µl



Target Protein

Principal Names: TRIB1, tribbles homolog 1 (Drosophila), C8FW, GIG2N: SKIP1, G-protein-coupled receptor induced protein, phosphoprotein regulated by mitogenic pathways

Official Symbol: TRIB1

Accession Number(s): NP_079471.1

Human GeneID(s): [10221](#)

Immunogen

Peptide with sequence C-TSDQIVPEYQEDSD, from the C Terminus of the protein sequence according to NP_079471.1 .

Please note the [peptide](#) is available for sale.

Purification and Storage

Purified from goat serum by ammonium sulphate precipitation followed by antigen affinity chromatography using the immunizing peptide.

Supplied at 0.5 mg/ml in Tris saline, 0.02% sodium azide, pH7.3 with 0.5% bovine serum albumin.

Aliquot and store at -20°C. Minimize freezing and thawing.

Applications Tested

Peptide ELISA: antibody detection limit dilution 1:8000.

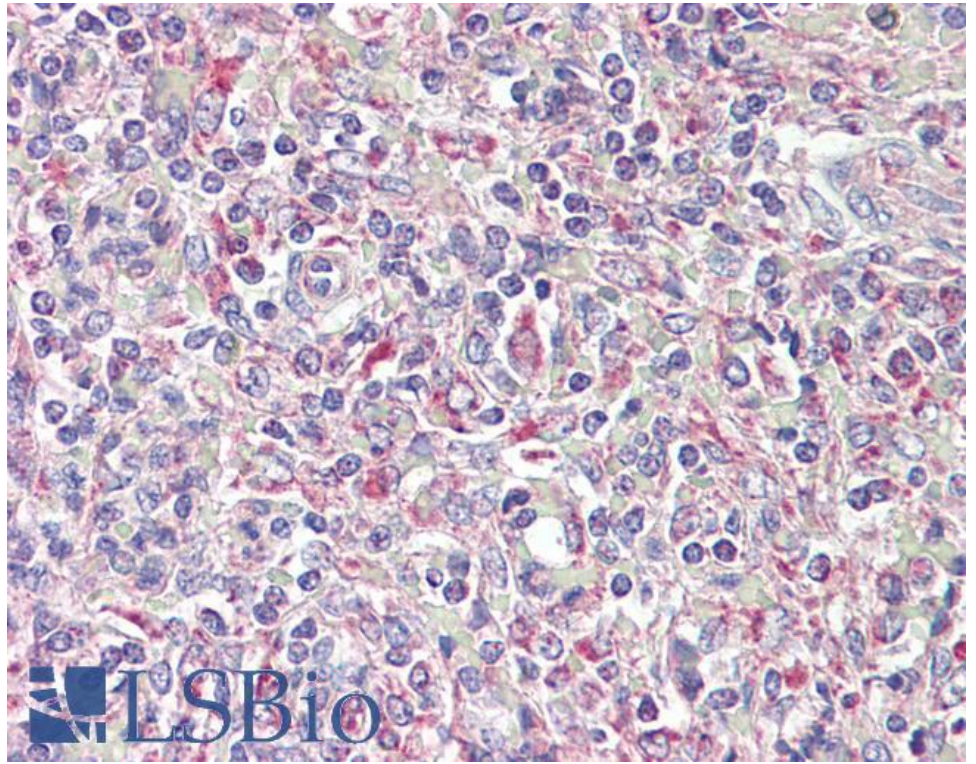
Western blot: Preliminary experiments gave an approx 35kDa band in Human Lymph Node and Peripheral Blood Mononucleocyte lysates after 0.3µg/ml antibody staining. Please note that currently we cannot find an explanation in the literature for the band we observe given the calculated size of 41.0kDa according to NP_079471.1. The 35kDa band was successfully blocked by incubation with the immunizing peptide.

IHC: Paraffin embedded Human Spleen. Recommended concentration: 3.75µg/ml.

Species Reactivity

Tested: Human

Expected from sequence similarity: Human, Mouse, Cow



EB08483 (3.75µg/ml) staining of paraffin embedded Human Spleen. Steamed antigen retrieval with citrate buffer pH 6, AP-staining.