



## UK Office

### Everest Biotech Ltd

Cherwell Innovation Centre  
77 Heyford Park  
Upper Heyford  
Oxfordshire  
OX25 5HD  
UK

Enquiries:

[info@everestbiotech.com](mailto:info@everestbiotech.com)

Sales:

[sales@everestbiotech.com](mailto:sales@everestbiotech.com)

Tech support:

[support@everestbiotech.com](mailto:support@everestbiotech.com)

Tel: +44 (0)1869 238326

[www.everestbiotech.com](http://www.everestbiotech.com)

**Research Use Only. Not for  
diagnostic or therapeutic use.**

## EB11105-T - Goat Anti-Trib1 (mouse) (aa304-317) Antibody - Trial

Size: 20µg specific antibody in 40µl



### Target Protein

**Principal Names:** A530090O15Rik, Trb1, TRB-1, tribbles homolog 1, tribbles homolog 1 (Drosophila), Trib1

**Official Symbol:** Trib1

**Accession Number(s):** NP\_653132.1

**Human GeneID(s):** [10221](#)

**Non-Human GeneID(s):** 211770 (mouse), 78969 (rat)

### Immunogen

Peptide with sequence PEHVSPKARCLIRS, from the internal region of the protein sequence according to NP\_653132.1.

Please note the [peptide](#) is available for sale.

### Purification and Storage

Purified from goat serum by ammonium sulphate precipitation followed by antigen affinity chromatography using the immunizing peptide.

Supplied at 0.5 mg/ml in Tris saline, 0.02% sodium azide, pH7.3 with 0.5% bovine serum albumin.

Aliquot and store at -20°C. Minimize freezing and thawing.

### Applications Tested

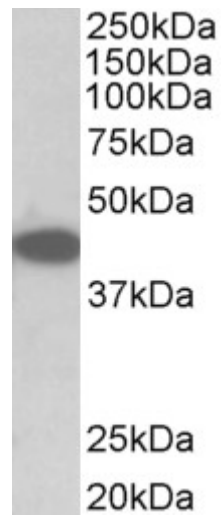
**Peptide ELISA:** antibody detection limit dilution 1:8000.

**Western blot:** Approx 42kDa band observed in lysates of cell line NIH3T3 (calculated MW of 41.3kDa according to NP\_653132.1). Recommended concentration: 0.1-0.3µg/ml.

### Species Reactivity

**Tested:** Mouse

**Expected from sequence similarity:** Human, Mouse, Rat, Dog, Cow



EB11105 (0.1 $\mu$ g/ml) staining of NIH3T3 lysate (35 $\mu$ g protein in RIPA buffer). Primary incubation was 1 hour.  
Detected by chemiluminescence.