



UK Office

Everest Biotech Ltd

Cherwell Innovation Centre
77 Heyford Park
Upper Heyford
Oxfordshire
OX25 5HD
UK

Enquiries:

info@everestbiotech.com

Sales:

sales@everestbiotech.com

Tech support:

support@everestbiotech.com

Tel: +44 (0)1869 238326

www.everestbiotech.com

**Research Use Only. Not for
diagnostic or therapeutic use.**

EB09630-T - Goat Anti-TRIB1 / SKIP1 Antibody - Trial

Size: 20µg specific antibody in 40µl



Target Protein

Principal Names: TRIB1, tribbles homolog 1 (Drosophila), C8FW, GIG2, SKIP1, G-protein-coupled receptor induced protein, phosphoprotein regulated by mitogenic pathways

Official Symbol: TRIB1

Accession Number(s): NP_079471.1

Human GeneID(s): [10221](#)

Immunogen

Peptide with sequence C-KHYQDKIRPYIQLPS, from the internal region of the protein sequence according to NP_079471.1.

Please note the [peptide](#) is available for sale.

Purification and Storage

Purified from goat serum by ammonium sulphate precipitation followed by antigen affinity chromatography using the immunizing peptide.

Supplied at 0.5 mg/ml in Tris saline, 0.02% sodium azide, pH7.3 with 0.5% bovine serum albumin.

Aliquot and store at -20°C. Minimize freezing and thawing.

Applications Tested

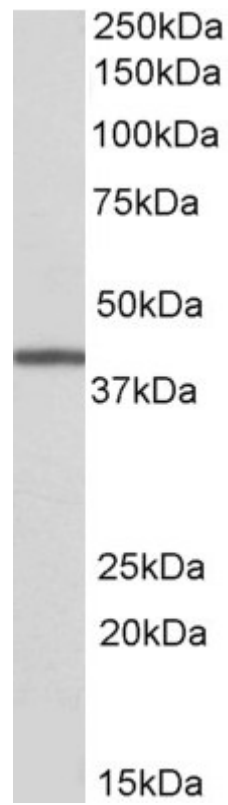
Peptide ELISA: antibody detection limit dilution 1:64000.

Western blot: Approx 40kDa band observed in Human Bone Marrow lysates (calculated MW of 41.0kDa according to NP_079471.1). Recommended concentration: 0.3-1µg/ml.

Species Reactivity

Tested: Human

Expected from sequence similarity: Human, Mouse, Rat, Dog, Cow, Pig



EB9630 (0.3 μ g/ml) staining of Human Bone Marrow lysate (35 μ g protein in RIPA buffer). Primary incubation was 1 hour. Detected by chemiluminescence.