



## UK Office

### Everest Biotech Ltd

Cherwell Innovation Centre  
77 Heyford Park  
Upper Heyford  
Oxfordshire  
OX25 5HD  
UK

Enquiries:

[info@everestbiotech.com](mailto:info@everestbiotech.com)

Sales:

[sales@everestbiotech.com](mailto:sales@everestbiotech.com)

Tech support:

[support@everestbiotech.com](mailto:support@everestbiotech.com)

Tel: +44 (0)1869 238326

Fax: +44 (0)1869 238327

## US Office

### Everest Biotech c/o Abcore

405 Maple Street, Suite A106  
Ramona,  
CA 92065  
USA

Inquiries:

[info@everestbiotech.com](mailto:info@everestbiotech.com)

Sales:

[usasales@everestbiotech.com](mailto:usasales@everestbiotech.com)

Tech support:

[support@everestbiotech.com](mailto:support@everestbiotech.com)

Tel: 888-320-4628 (toll-free)

Fax: 888-841-9041

[www.everestbiotech.com](http://www.everestbiotech.com)

**Research Use Only. Not for  
diagnostic or therapeutic use.**

## EB10871 - Goat Anti-TRIM2 (aa233-247) Antibody

Size: 100µg specific antibody in 200µl



### Target Protein

**Principal Names:** TRIM2, tripartite motif-containing 2, KIAA0517, RNF86, RING finger protein 86, tripartite motif protein 2, tripartite motif protein TRIM2, tripartite motif-containing protein 2

**Official Symbol:** TRIM2

**Accession Number(s):** NP\_056086.2; NP\_001123539.1

**Human GeneID(s):** [23321](#)

**Non-Human GeneID(s):** 80890 (mouse), 361970 (rat)

**Important Comments:** This antibody is expected to recognize both reported isoforms (NP\_056086.2; NP\_001123539.1).

### Immunogen

Peptide with sequence C-STFDELQKTLNVRKS, from the internal region of the protein sequence according to NP\_056086.2; NP\_001123539.1.

Please note the [peptide](#) is available for sale.

### Purification and Storage

Purified from goat serum by ammonium sulphate precipitation followed by antigen affinity chromatography using the immunizing peptide.

Supplied at 0.5 mg/ml in Tris saline, 0.02% sodium azide, pH7.3 with 0.5% bovine serum albumin.

Aliquot and store at -20°C. Minimize freezing and thawing.

### Applications Tested

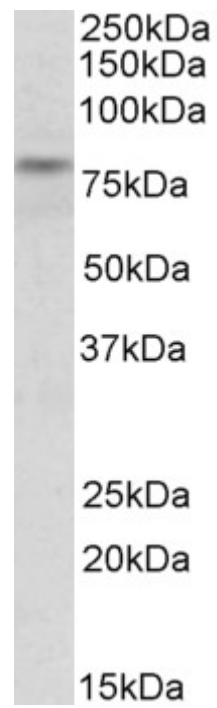
**Peptide ELISA:** antibody detection limit dilution 1:16000.

**Western blot:** Approx 80kDa band observed in Mouse Brain lysates (calculated MW of 81.4kDa according to Mouse NP\_109631.1). Recommended concentration: 0.1-0.3µg/ml.

### Species Reactivity

**Tested:** Mouse

**Expected from sequence similarity:** Human, Mouse, Rat, Dog, Cow



EB10871 (0.1µg/ml) staining of Mouse Brain lysate (35µg protein in RIPA buffer). Primary incubation was 1 hour.  
Detected by chemiluminescence.