



UK Office

Everest Biotech Ltd

Cherwell Innovation Centre
77 Heyford Park
Upper Heyford
Oxfordshire
OX25 5HD
UK

Enquiries:

info@everestbiotech.com

Sales:

sales@everestbiotech.com

Tech support:

support@everestbiotech.com

Tel: +44 (0)1869 238326

Fax: +44 (0)1869 238327

US Office

Everest Biotech c/o Abcore

405 Maple Street, Suite A106
Ramona,
CA 92065
USA

Inquiries:

info@everestbiotech.com

Sales:

usasales@everestbiotech.com

Tech support:

support@everestbiotech.com

Tel: 888-320-4628 (toll-free)

Fax: 888-841-9041

www.everestbiotech.com

**Research Use Only. Not for
diagnostic or therapeutic use.**

EB05914 - Goat Anti-TRIM2 Antibody

Size: 100µg specific antibody in 200µl



Target Protein

Principal Names: TRIM2, tripartite motif-containing 2, KIAA0517, tripartite motif protein 2, tripartite motif protein TRIM2, RNF86, tripartite motif protein TRIM2

Official Symbol: TRIM2

Accession Number(s): NP_056086.2; NP_001123539.1; NP_001337983.1;
NP_001337984.1; NP_001337985.1; NP_001337986.1

Human GeneID(s): [23321](#)

Non-Human GeneID(s): 80890 (mouse)

Important Comments: Cross-reactivity with TRIM3 has been demonstrated in Mouse.

Immunogen

Peptide with sequence DSGNHCFKVVRYLQ, from the C Terminus of the protein sequence according to NP_056086.2; NP_001123539.1; NP_001337983.1; NP_001337984.1; NP_001337985.1; NP_001337986.1.

Please note the [peptide](#) is available for sale.

Purification and Storage

Purified from goat serum by ammonium sulphate precipitation followed by antigen affinity chromatography using the immunizing peptide.

Supplied at 0.5 mg/ml in Tris saline, 0.02% sodium azide, pH7.3 with 0.5% bovine serum albumin.

Aliquot and store at -20°C. Minimize freezing and thawing.

Applications Tested

Peptide ELISA: antibody detection limit dilution 1:16000.

Western blot: Approx 75-85kDa band observed in Rat Brain lysates (calculated MW of 83.3 according to Rat NP_001102022.1). An additional band of unknown identity was also consistently observed at 30kDa. This band was successfully blocked by incubation with the immunizing peptide. Recommended concentration: 0.5-1µg/ml. Primary incubation 1 hour at room temperature.

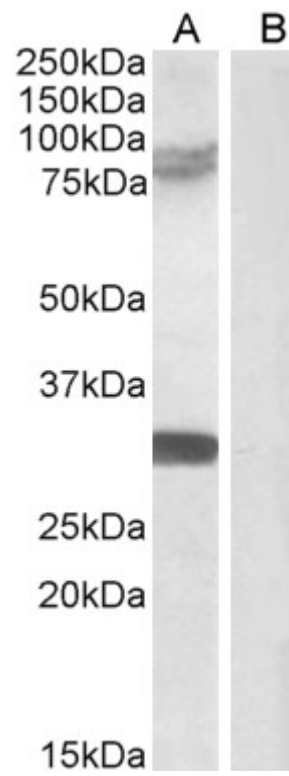
IHC: In paraffin embedded Human Brain (Cortex) shows cytoplasm staining in neuronal cell bodies. Recommended concentration: 6-12µg/ml.

Flow Cytometry: Flow cytometric analysis of Jurkat cells. Recommended concentration: 10ug/ml.

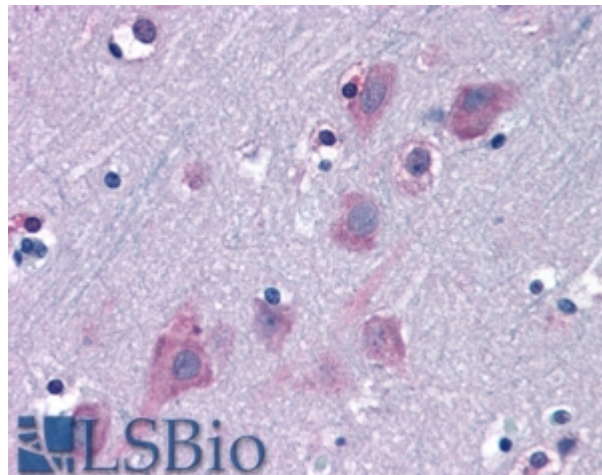
Species Reactivity

Tested: Human, Rat

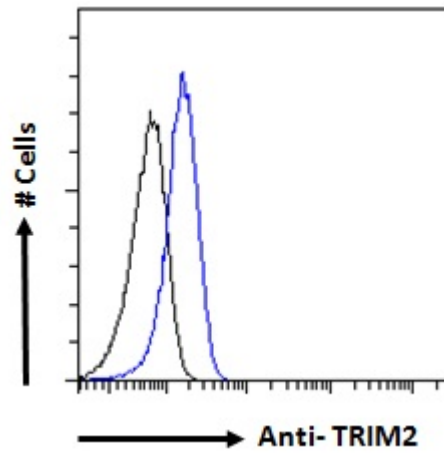
Expected from sequence similarity: Human, Mouse, Rat, Dog, Cow



EB05914 (0.5 μ g/ml) staining of Rat Brain (A) + Peptide (B) lysate (35 μ g protein in RIPA buffer). Detected by chemiluminescence.



EB05914 (6.3 μ g/ml) staining of paraffin embedded Human Cortex. Steamed antigen retrieval with citrate buffer pH 6, AP-staining.



EB05914 Flow cytometric analysis of paraformaldehyde fixed Jurkat cells (blue line), permeabilized with 0.5% Triton. Primary incubation overnight (10ug/ml) followed by Alexa Fluor 488 secondary antibody (1ug/ml). IgG control: Unimmunized goat IgG (black line) followed by Alexa Fluor 488 secondary antibody.