



UK Office

Everest Biotech Ltd

Cherwell Innovation Centre
77 Heyford Park
Upper Heyford
Oxfordshire
OX25 5HD
UK

Enquiries:

info@everestbiotech.com

Sales:

sales@everestbiotech.com

Tech support:

support@everestbiotech.com

Tel: +44 (0)1869 238326

Fax: +44 (0)1869 238327

US Office

Everest Biotech c/o Abcore

405 Maple Street, Suite A106
Ramona,
CA 92065
USA

Inquiries:

info@everestbiotech.com

Sales:

usasales@everestbiotech.com

Tech support:

support@everestbiotech.com

Tel: 888-320-4628 (toll-free)

Fax: 888-841-9041

www.everestbiotech.com

**Research Use Only. Not for
diagnostic or therapeutic use.**

EB07084 - Goat Anti-TRIM5 / RNF88 (alpha isoform) Antibody

Size: 100µg specific antibody in 200µl



Target Protein

Principal Names: TRIM5, tripartite motif-containing 5, HGNC:16276, RNF88, tripartite motif protein 5, tripartite motif protein TRIM5, TRIM5alpha, OTTHUMP00000069812, tripartite motif protein TRIM, tripartite motif-containing protein 5 alpha

Official Symbol: TRIM5

Accession Number(s): NP_149023.1

Human GeneID(s): [85363](#)

Important Comments: This antibody is expected to recognise isoform alpha (NP_149023.1) only.

Immunogen

Peptide with sequence CNIKKNENYQPK, from the internal region of the protein sequence according to NP_149023.1.

Please note the [peptide](#) is available for sale.

Purification and Storage

Purified from goat serum by ammonium sulphate precipitation followed by antigen affinity chromatography using the immunizing peptide.

Supplied at 0.5 mg/ml in Tris saline, 0.02% sodium azide, pH7.3 with 0.5% bovine serum albumin.

Aliquot and store at -20°C. Minimize freezing and thawing.

Applications Tested

Peptide ELISA: antibody detection limit dilution 1:32000.

Western blot: Preliminary experiments gave an approx 37kDa band in Lysates of Human cell lines Daudi, Jurkat and MOLT4 after 0.3 µg/ml antibody staining. Please note that currently we cannot find an explanation in the literature for the band we observe given the calculated size of 56.3kDa according to NP_149023.1. The 37kDa band was successfully blocked by incubation with the immunizing peptide. We would appreciate any feedback from people in the field - have any results been reported with other antibodies/lysates?

Have any further splice variants/modified forms been reported?

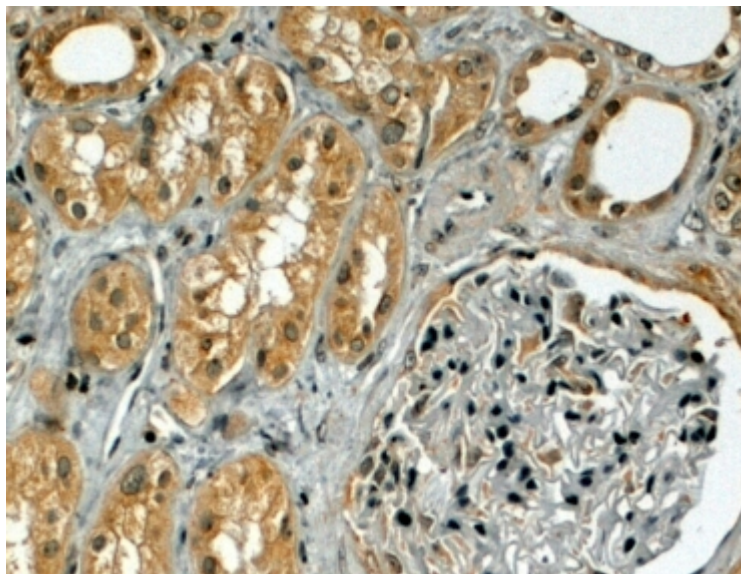
IHC: In paraffin embedded Human Kidney shows cytoplasm staining in PCT.

Recommended concentration, 3-6µg/ml.

Species Reactivity

Tested:

Expected from sequence similarity: Human



EB07084 (4µg/ml) staining of paraffin embedded Human Kidney. Steamed antigen retrieval with citrate buffer pH 6, HRP-staining.