



## International Office

### Everest Biotech Ltd

Vector Laboratories, Inc.  
6737 Mowry Ave  
Newark, CA 94560  
United States

Customer Service:

[customerservice@vectorlabs.com](mailto:customerservice@vectorlabs.com)

Technical Service:

[technical@vectorlabs.com](mailto:technical@vectorlabs.com)

Tel: +1 (800) 227-6666

[www.everestbiotech.com](http://www.everestbiotech.com)

**Research Use Only. Not for  
diagnostic or therapeutic use.**

## EB10443-B - Goat Anti-TRIM72, Biotinylated Antibody

Size: 100µg specific antibody in 200µl



### Target Protein

**Principal Names:** tripartite motif-containing 72, TRIM72

**Official Symbol:** TRIM72

**Accession Number(s):** NP\_001008275.1

**Human GeneID(s):** [493829](#)

**Non-Human GeneID(s):** 434246 (mouse), 365377 (rat)

### Immunogen

Peptide with sequence C-RPQALSTNLQ., from the internal region of the protein sequence according to NP\_001008275.1.

Please note the [peptide](#) is available for sale.

### Purification and Storage

Purified from goat serum by ammonium sulphate precipitation followed by antigen affinity chromatography using the immunizing peptide.

Supplied at 0.5 mg/ml in Tris saline, 0.02% sodium azide, pH7.3 with 0.5% bovine serum albumin.

Aliquot and store at -20°C. Minimize freezing and thawing.

### Applications Tested

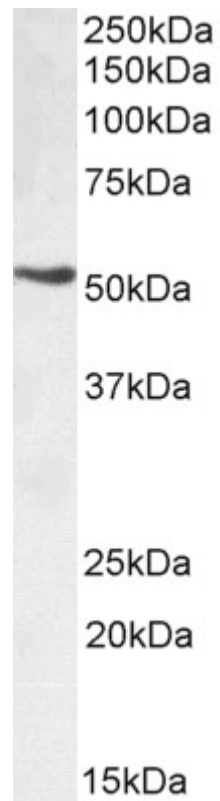
**Peptide ELISA:** antibody detection limit dilution 1:16000.

**Western blot:** Approx 52kDa band observed in Mouse Heart lysates (calculated MW of 52.8kDa according to Mouse NP\_001073401.1). Recommended concentration: 0.01-0.03µg/ml.

### Species Reactivity

**Tested:** Mouse

**Expected from sequence similarity:** Human, Mouse, Rat, Dog, Cow



Biotinylated EB10443 (0.01ug/ml) staining of Mouse Heart lysate (35µg protein in RIPA buffer). Primary incubation was 1 hour. Detected by chemiluminescence, using streptavidin-HRP and using NAP blocker as a substitute for skimmed milk.