



## UK Office

### Everest Biotech Ltd

Cherwell Innovation Centre  
77 Heyford Park  
Upper Heyford  
Oxfordshire  
OX25 5HD  
UK

Enquiries:

[info@everestbiotech.com](mailto:info@everestbiotech.com)

Sales:

[sales@everestbiotech.com](mailto:sales@everestbiotech.com)

Tech support:

[support@everestbiotech.com](mailto:support@everestbiotech.com)

Tel: +44 (0)1869 238326

Fax: +44 (0)1869 238327

## US Office

### Everest Biotech c/o Abcore

405 Maple Street, Suite A106  
Ramona,  
CA 92065  
USA

Inquiries:

[info@everestbiotech.com](mailto:info@everestbiotech.com)

Sales:

[usasales@everestbiotech.com](mailto:usasales@everestbiotech.com)

Tech support:

[support@everestbiotech.com](mailto:support@everestbiotech.com)

Tel: 888-320-4628 (toll-free)

Fax: 888-841-9041

[www.everestbiotech.com](http://www.everestbiotech.com)

**Research Use Only. Not for  
diagnostic or therapeutic use.**

## EB06643 - Goat Anti-Triosephosphate isomerase Antibody

Size: 100µg specific antibody in 200µl



### Target Protein

**Principal Names:** triosephosphate isomerase 1, TPI1, TPI, MGC88108, epididymis secretory protein Li 49, HEL-S-49, TIM, TPID, triose-phosphate isomerase

**Official Symbol:** TPI1

**Accession Number(s):** NP\_000356.1; NP\_001152759.1; NP\_001244955.1

**Human GeneID(s):** [7167](#)

**Non-Human GeneID(s):** 21991 (mouse), 24849 (rat)

**Important Comments:** This antibody is expected to recognise reported isoforms 1, 2 and 3 (NP\_000356.1; NP\_001152759.1, NP\_001244955.1).

### Immunogen

Peptide with sequence C-LKPEFVDIINAKQ, from the C Terminus of the protein sequence according to NP\_000356.1; NP\_001152759.1; NP\_001244955.1.

Please note the [peptide](#) is available for sale.

### Purification and Storage

Purified from goat serum by ammonium sulphate precipitation followed by antigen affinity chromatography using the immunizing peptide.

Supplied at 0.5 mg/ml in Tris saline, 0.02% sodium azide, pH7.3 with 0.5% bovine serum albumin.

Aliquot and store at -20°C. Minimize freezing and thawing.

### Applications Tested

**Peptide ELISA:** antibody detection limit dilution 1:16000.

**Western blot:** Approx 26kDa band observed in lysates of cell lines HEK293, HeLa, HepG2, Jurkat, Raw264.7. KNRK and MDCK (calculated MW of 26.7kDa according to Human NP\_000356.1). Recommended concentration: 0.001-0.01µg/ml. Primary incubation 1 hour at room temperature. This antibody has been successfully used in WB on Mouse in PMID: 18544163. This antibody has been successfully used in WB on Human in PMID: 17326818.

**IHC:** In paraffin embedded Human Liver shows staining of the sinusoids. Recommended concentration: 2-4µg/ml. Paraffin embedded Human Pancreas. Recommended concentration: 5µg/ml.

**Flow Cytometry:** Flow cytometric analysis of HepG2 cells. Recommended concentration: 10ug/ml.

### Species Reactivity

**Tested:** Human, Mouse, Rat, Dog

**Expected from sequence similarity:** Human, Mouse, Rat, Dog, Cow

### Specific References

**This antibody has been successfully used in Western blot on Mouse:**

Honoré B, Buus S, Claesson MH.

Identification of differentially expressed proteins in spontaneous thymic lymphomas from knockout mice with deletion of p53.

Proteome Sci. 2008 Jun 10;6:18.

PMID: 18544163

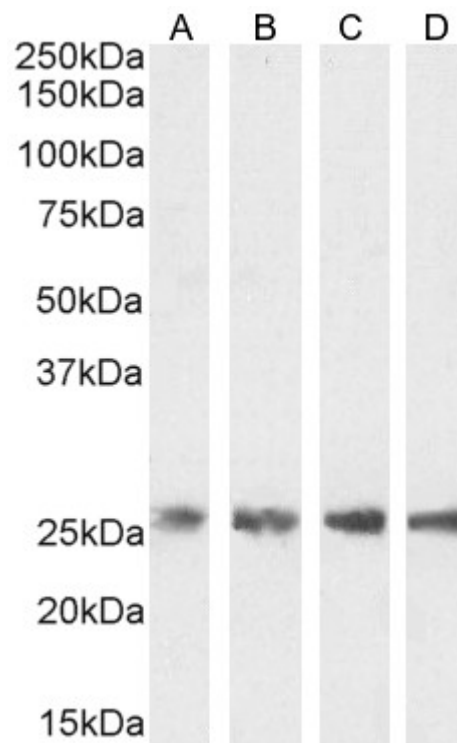
**This antibody has been successfully used in Western blot on Human:**

Vorum H, Østergaard M, Rice GE, Honoré B, Bek T.

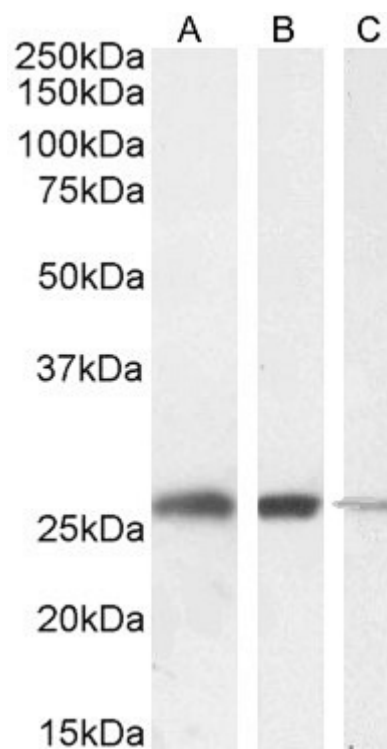
Identification of differentially regulated proteins in a patient with Leber's Congenital Amaurosis--a proteomic study.

Proteome Sci. 2007 Feb 27;5:5.

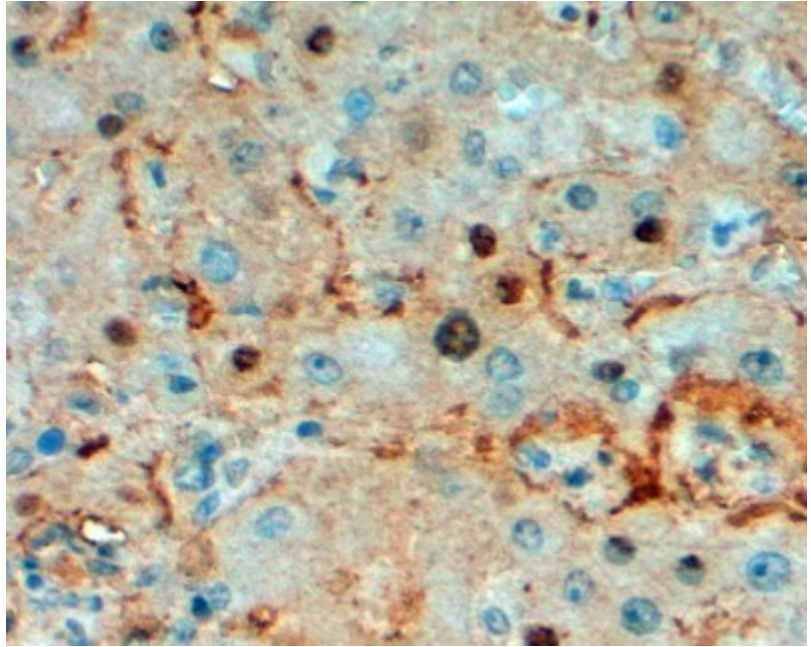
PMID: 17326818



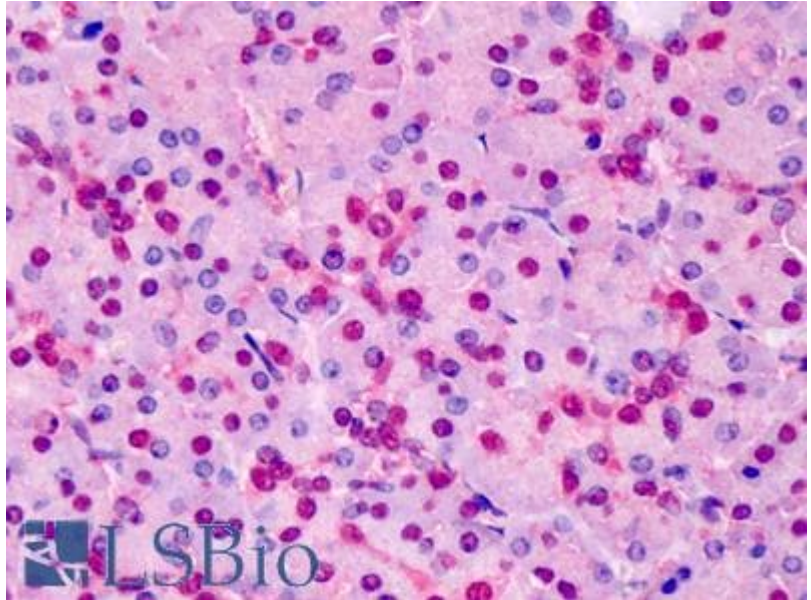
EB06643 (0.001 µg/ml) staining of HepG2 (A), HEK293 (B), HeLa (C) and Jurkat (D) cell lysate (35 µg protein in RIPA buffer). Detected by chemiluminescence.



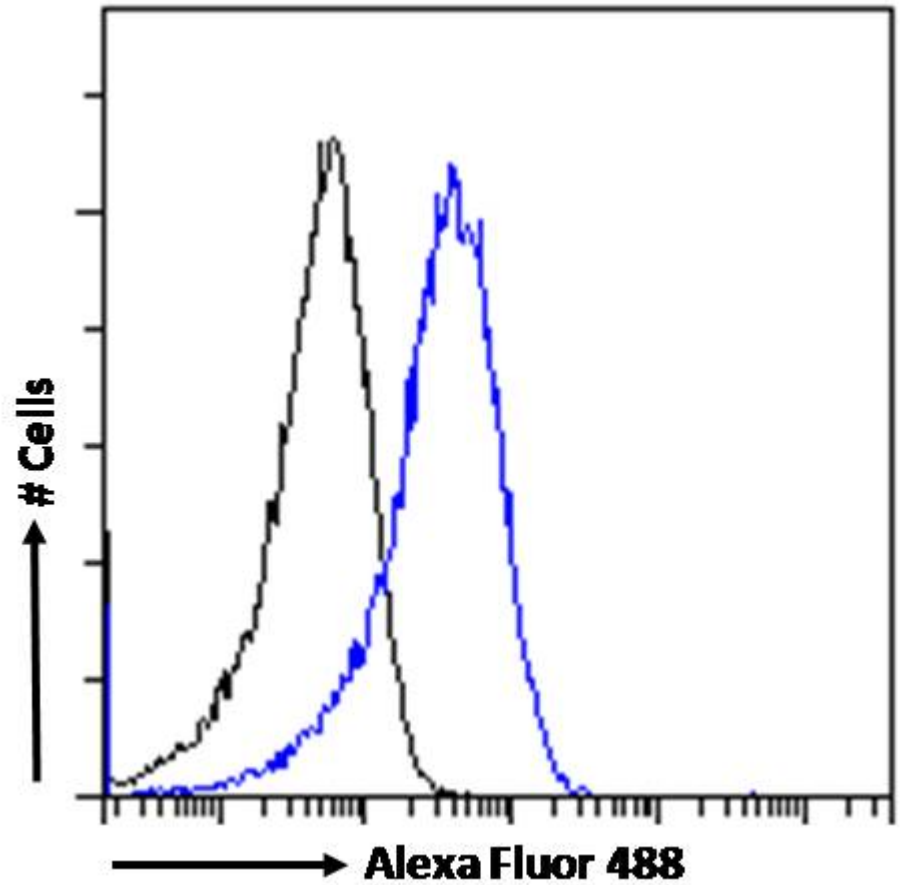
EB06643 (0.001 µg/ml) staining of RAW264.7 (A), KNRK (B) and MDCK (C) cell lysate (35 µg protein in RIPA buffer). Detected by chemiluminescence.



EB06643 (2µg/ml) staining of paraffin embedded Human Liver. Steamed antigen retrieval with Tris/EDTA buffer pH 9, HRP-staining.



EB06643 (5µg/ml) staining of paraffin embedded Human Pancreas. Steamed antigen retrieval with Tris/EDTA buffer pH 9, AP-staining.



EB06643 Flow cytometric analysis of paraformaldehyde fixed HeLa cells (blue line), permeabilized with 0.5% Triton. Primary incubation 1hr (10ug/ml) followed by Alexa Fluor 488 secondary antibody (1ug/ml). IgG control: Unimmunized goat IgG (black line) followed by Alexa Fluor 488 secondary antibody.