



International Office

Everest Biotech Ltd

Vector Laboratories, Inc.
6737 Mowry Ave
Newark, CA 94560
United States

Customer Service:

customerservice@vectorlabs.com

Technical Service:

technical@vectorlabs.com

Tel: +1 (800) 227-6666

www.everestbiotech.com

**Research Use Only. Not for
diagnostic or therapeutic use.**

EB08839 - Goat Anti-TROP2 Antibody

Size: 100µg specific antibody in 200µl



Target Protein

Principal Names: TROP2, TACSTD2, tumor-associated calcium signal transducer 2, EGP-1, GA733, GA733-1, M1S1, epithelial glycoprotein-1, membrane component, chromosome 1, surface marker 1 (40kD glycoprotein, identified by monoclonal antibody GA733)

Official Symbol: TACSTD2

Accession Number(s): NP_002344.2

Human GeneID(s): [4070](#)

Non-Human GeneID(s): 56753 (mouse)

Immunogen

Peptide with sequence C-HYEQPTIQIELRQN , from the internal region of the protein sequence according to NP_002344.2.

Please note the [peptide](#) is available for sale.

Purification and Storage

Purified from goat serum by ammonium sulphate precipitation followed by antigen affinity chromatography using the immunizing peptide.

Supplied at 0.5 mg/ml in Tris saline, 0.02% sodium azide, pH7.3 with 0.5% bovine serum albumin.

Aliquot and store at -20°C. Minimize freezing and thawing.

Applications Tested

Peptide ELISA: antibody detection limit dilution 1:4000.

Western blot: Approx. 37kDa band observed in Human Prostate lysates (calculated MW of 35.7kDa according to NP_002344.2). Recommended concentration: 0.2-0.5µg/ml.

Primary incubation was 1 hour.

IHC: Paraffin embedded Human Tonsil. Recommended concentration: 2.5µg/ml.

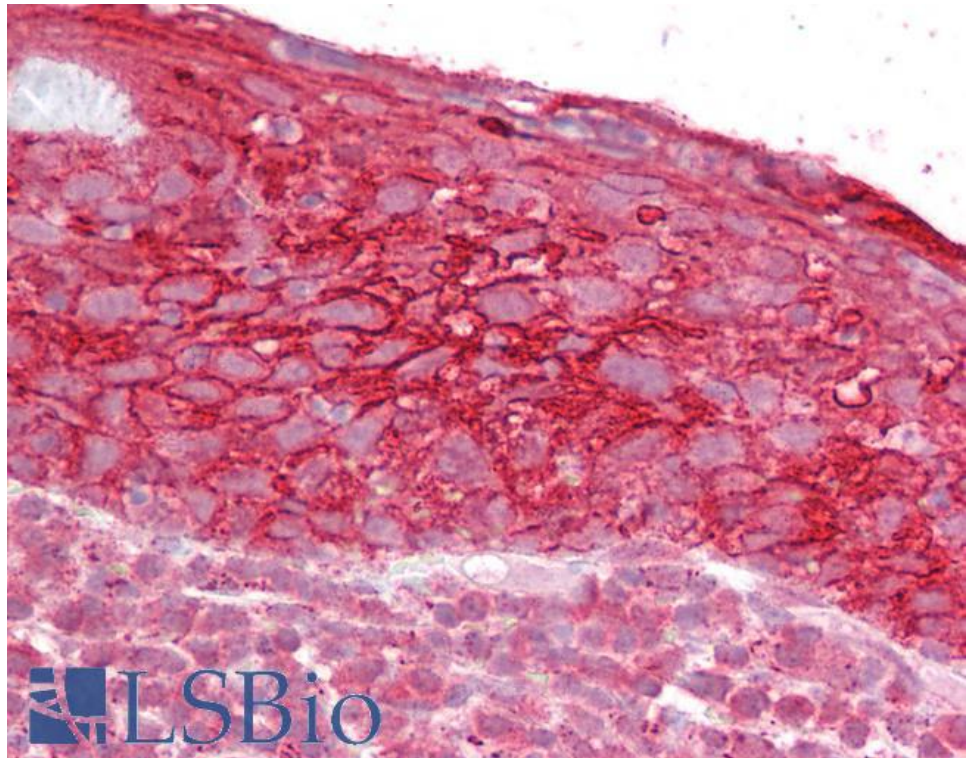
Species Reactivity

Tested: Human

Expected from sequence similarity: Human, Mouse, Rat, Dog, Pig, Cow



EB08839 (0.2µg/ml) staining of Human Prostate lysate (35µg protein in RIPA buffer). Detected by chemiluminescence.



EB08839 (2.5µg/ml) staining of paraffin embedded Human Tonsil. Steamed antigen retrieval with citrate buffer pH 6, AP-staining.