



UK Office

Everest Biotech Ltd

Cherwell Innovation Centre
77 Heyford Park
Upper Heyford
Oxfordshire
OX25 5HD
UK

Enquiries:

info@everestbiotech.com

Sales:

sales@everestbiotech.com

Tech support:

support@everestbiotech.com

Tel: +44 (0)1869 238326

Fax: +44 (0)1869 238327

US Office

Everest Biotech c/o Abcore

405 Maple Street, Suite A106
Ramona,
CA 92065
USA

Inquiries:

info@everestbiotech.com

Sales:

usasales@everestbiotech.com

Tech support:

support@everestbiotech.com

Tel: 888-320-4628 (toll-free)

Fax: 888-841-9041

www.everestbiotech.com

**Research Use Only. Not for
diagnostic or therapeutic use.**

EB06901 - Goat Anti-TRPC6 Antibody

Size: 100µg specific antibody in 200µl



Target Protein

Principal Names: TRPC6, transient receptor potential cation channel, subfamily C, member 6, HGNC:12338, TRP6, transient receptor potential channel 6, FLJ11098, FLJ14863, FSGS2, TRP6

Official Symbol: TRPC6

Accession Number(s): NP_004612.2

Human GeneID(s): [7225](#)

Immunogen

Peptide with sequence C-EKLSMEPNQEETN, from the C Terminus of the protein sequence according to NP_004612.2.

Please note the [peptide](#) is available for sale.

Purification and Storage

Purified from goat serum by ammonium sulphate precipitation followed by antigen affinity chromatography using the immunizing peptide.

Supplied at 0.5 mg/ml in Tris saline, 0.02% sodium azide, pH7.3 with 0.5% bovine serum albumin.

Aliquot and store at -20°C. Minimize freezing and thawing.

Applications Tested

Peptide ELISA: antibody detection limit dilution 1:2000.

Western blot: Approx 100kDa band observed in lysates of cell line A549 (calculated MW of 106kDa according to NP_004612.2). Preliminary experiments also showed 100kDa in Human Lung lysates and in lysates of cell line HEK293. This molecular weight is routinely observed by other sources. Recommended concentration: 0.3-1µg/ml. Primary incubation 1 hour at room temperature. This antibody has been successfully used in WB on Mouse PMID: 32882106.

Flow Cytometry: Flow cytometric analysis of A549 cells. Recommended concentration: 10ug/ml.

Species Reactivity

Tested: Human

Expected from sequence similarity: Human, Dog, Pig, Cow

Specific Reference

This antibody has been successfully used in WB on Mouse:

Babar Murtaza, Aziz Hichami, Amira S Khan, Jiri Plesnik, Omar Sery, Alexander Dietrich, Lutz Birnbaumer, Naim A Khan

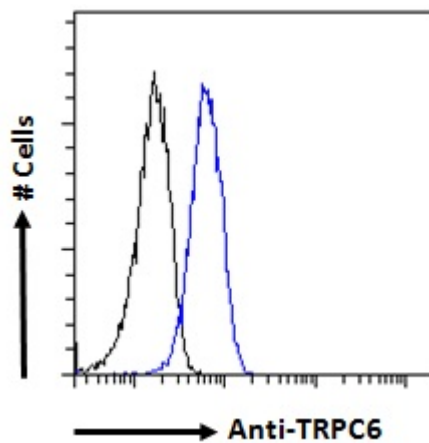
Implication of TRPC3 channel in gustatory perception of dietary lipids

Acta Physiol (Oxf). 2020 Sep 3;e13554. doi: 10.1111/apha.13554.

PMID: 32882106



EB06901 (1 μ g/ml) staining of A549 cell lysate (35 μ g protein in RIPA buffer). Detected by chemiluminescence.



EB06901 Flow cytometric analysis of paraformaldehyde fixed A549 cells (blue line), permeabilized with 0.5% Triton. Primary incubation 1hr (10 μ g/ml) followed by Alexa Fluor 488 secondary antibody (1 μ g/ml). IgG control: Unimmunized goat IgG (black line) followed by Alexa Fluor 488 secondary antibody.