

International Office

Everest Biotech Ltd

Vector Laboratories, Inc.
6737 Mowry Ave
Newark, CA 94560
United States

Customer Service:

customerservice@vectorlabs.com

Technical Service:

technical@vectorlabs.com

Tel: +1 (800) 227-6666

www.everestbiotech.com

**Research Use Only. Not for
diagnostic or therapeutic use.**

EB11508 - Goat Anti-Trpc6 (mouse) Antibody

Size: 100µg specific antibody in 200µl



Target Protein

Principal Names: AV025995, calcium entry channel, LLHWJM002, LLHWJM003, LLHWJM004, mtrp6, short transient receptor potential channel 6, transient receptor potential cation channel, subfamily C, member 6, transient receptor protein 6, TRP-6, Trpc6, Trrp6

Official Symbol: Trpc6

Accession Number(s): NP_038866.2

Non-Human GeneID(s): 22068 (mouse), 89823 (rat)

Immunogen

Peptide with sequence C-KQSSTRSSEDYHLNS, from the internal region of the protein sequence according to NP_038866.2.

Please note the [peptide](#) is available for sale.

Purification and Storage

Purified from goat serum by ammonium sulphate precipitation followed by antigen affinity chromatography using the immunizing peptide.

Supplied at 0.5 mg/ml in Tris saline, 0.02% sodium azide, pH7.3 with 0.5% bovine serum albumin.

Aliquot and store at -20°C. Minimize freezing and thawing.

Applications Tested

Peptide ELISA: antibody detection limit dilution 1:64000.

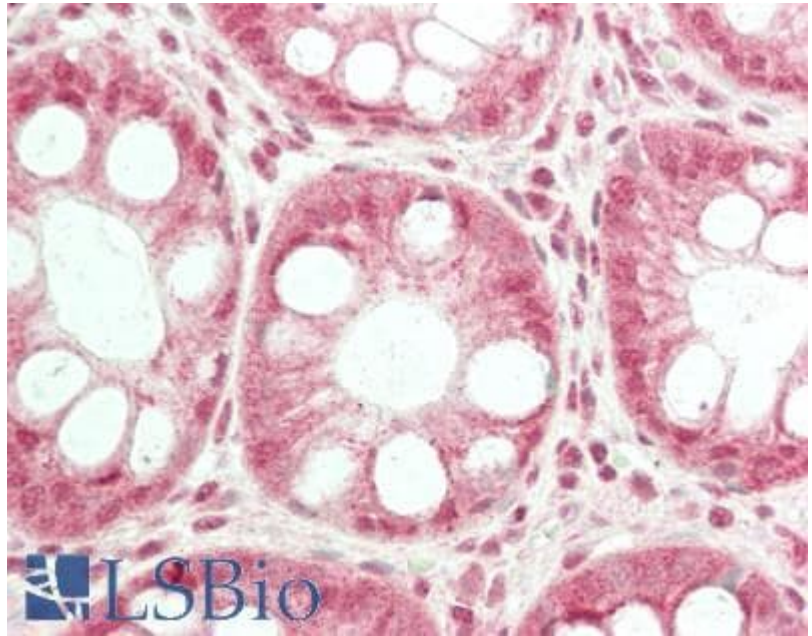
Western blot: Preliminary experiments gave an approx 75kDa band in Mouse and Rat Brain and Spinal Cord lysates after 0.3µg/ml antibody staining. Please note that currently we cannot find an explanation in the literature for the band we observe given the calculated size of 107kDa according to NP_038866.2. The 75kDa band was successfully blocked by incubation with the immunizing peptide.

IHC: Paraffin embedded Human Colon. Recommended concentration: 5µg/ml.

Species Reactivity

Tested: Human

Expected from sequence similarity: Mouse, Rat



EB11508 (5µg/ml) staining of paraffin embedded Human Colon. Steamed antigen retrieval with citrate buffer pH 6, AP-staining.