



## UK Office

### Everest Biotech Ltd

Cherwell Innovation Centre  
77 Heyford Park  
Upper Heyford  
Oxfordshire  
OX25 5HD  
UK

Enquiries:

[info@everestbiotech.com](mailto:info@everestbiotech.com)

Sales:

[sales@everestbiotech.com](mailto:sales@everestbiotech.com)

Tech support:

[support@everestbiotech.com](mailto:support@everestbiotech.com)

Tel: +44 (0)1869 238326

[www.everestbiotech.com](http://www.everestbiotech.com)

**Research Use Only. Not for  
diagnostic or therapeutic use.**

## EB08515-B - Goat Anti-TRPV5, Biotinylated Antibody

Size: 100µg specific antibody in 200µl



### Target Protein

**Principal Names:** TRPV5, transient receptor potential cation channel subfamily V member 5, CAT2, ECAC1, OTRPC3, calcium transport protein 2, calcium transporter 2, epithelial calcium channel 1, osm-9-like TRP channel 3, transient receptor potential cation channel, subfamily V, member 5

**Official Symbol:** TRPV5

**Accession Number(s):** NP\_062815.3

**Human GeneID(s):** [56302](#)

**Non-Human GeneID(s):** 194352 (mouse), 116469 (rat)

### Immunogen

Peptide with sequence C-SHRGWELRQNT., from the internal region of the protein sequence according to NP\_062815.3.

Please note the [peptide](#) is available for sale.

### Purification and Storage

Purified from goat serum by ammonium sulphate precipitation followed by antigen affinity chromatography using the immunizing peptide.

Supplied at 0.5 mg/ml in Tris saline, 0.02% sodium azide, pH7.3 with 0.5% bovine serum albumin.

Aliquot and store at -20°C. Minimize freezing and thawing.

### Applications Tested

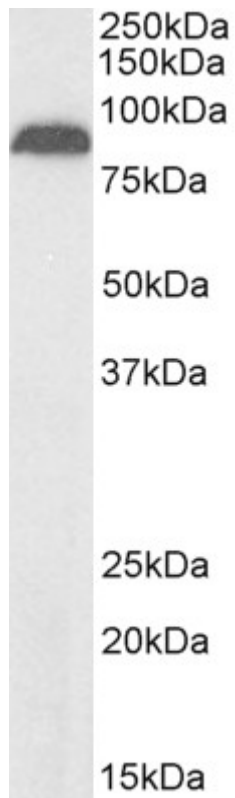
**Peptide ELISA:** antibody detection limit dilution 1:16000.

**Western blot:** Approx 82kDa band observed in Human Pancreas lysates (calculated MW of 82.6kDa according to NP\_062815.2). See non-biotinylated parental product's datasheet for further QC data. Recommended concentration: 1-3µg/ml.

### Species Reactivity

**Tested:** Human

**Expected from sequence similarity:** Human, Mouse, Rat, Dog, Pig, Cow



Biotinylated EB08515 (2 $\mu$ g/ml) staining of Human Pancreas lysate (35 $\mu$ g protein in RIPA buffer), exactly mirroring its parental non-biotinylated product. Primary incubation was 1 hour. Detected by chemiluminescence, using streptavidin-HRP and using NAP blocker as a substitute for skimmed milk.