

UK Office

Everest Biotech Ltd

Cherwell Innovation Centre
77 Heyford Park
Upper Heyford
Oxfordshire
OX25 5HD
UK

Enquiries:

info@everestbiotech.com

Sales:

sales@everestbiotech.com

Tech support:

support@everestbiotech.com

Tel: +44 (0)1869 238326

www.everestbiotech.com

**Research Use Only. Not for
diagnostic or therapeutic use.**

EB11281 - Goat Anti-TSPYL2 (aa441-454) Antibody

Size: 100µg specific antibody in 200µl

Target Protein

Principal Names: CASK-interacting nucleosome assembly protein, CDA1, cell division autoantigen 1, CINAP, CTCL, CTCL tumor antigen se20-4, CTCL-associated antigen se20-4, cutaneous T-cell lymphoma-associated antigen se20-4, cutaneous T-cell lymphoma-associated tumor antigen se20-4, DENTT, differentially expressed nucleolar TGF-beta1 target, differentially-expressed nucleolar TGF-beta1 target protein, HRIHFB2216, NP79, nuclear protein of 79 kDa, SE204, testis-specific protein Y encoded-like 2, testis-specific Y-encoded-like protein 2, TSPX, TSPY-like 2, TSPY-like protein 2, TSPYL2

Official Symbol: TSPYL2

Accession Number(s): NP_071400.1

Human GeneID(s): [64061](#)

Immunogen

Peptide with sequence C-SDIDETIHDIKISD, from the internal region of the protein sequence according to NP_071400.1.

Please note the [peptide](#) is available for sale.

Purification and Storage

Purified from goat serum by ammonium sulphate precipitation followed by antigen affinity chromatography using the immunizing peptide.

Supplied at 0.5 mg/ml in Tris saline, 0.02% sodium azide, pH7.3 with 0.5% bovine serum albumin.

Aliquot and store at -20°C. Minimize freezing and thawing.

Applications Tested

Peptide ELISA: antibody detection limit dilution 1:64000.

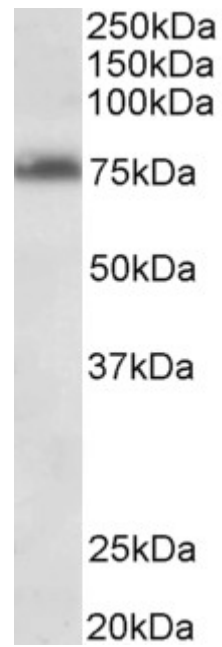
Western blot: Approx 75kDa band observed in lysates of cell lines Jurkat and MOLT4 (calculated MW of 79.4kDa according to NP_071400.1). Recommended concentration: 0.3-1µg/ml. Primary incubation was 1 hour.

IHC: Paraffin embedded Human Pancreas. Recommended concentration: 5µg/ml.

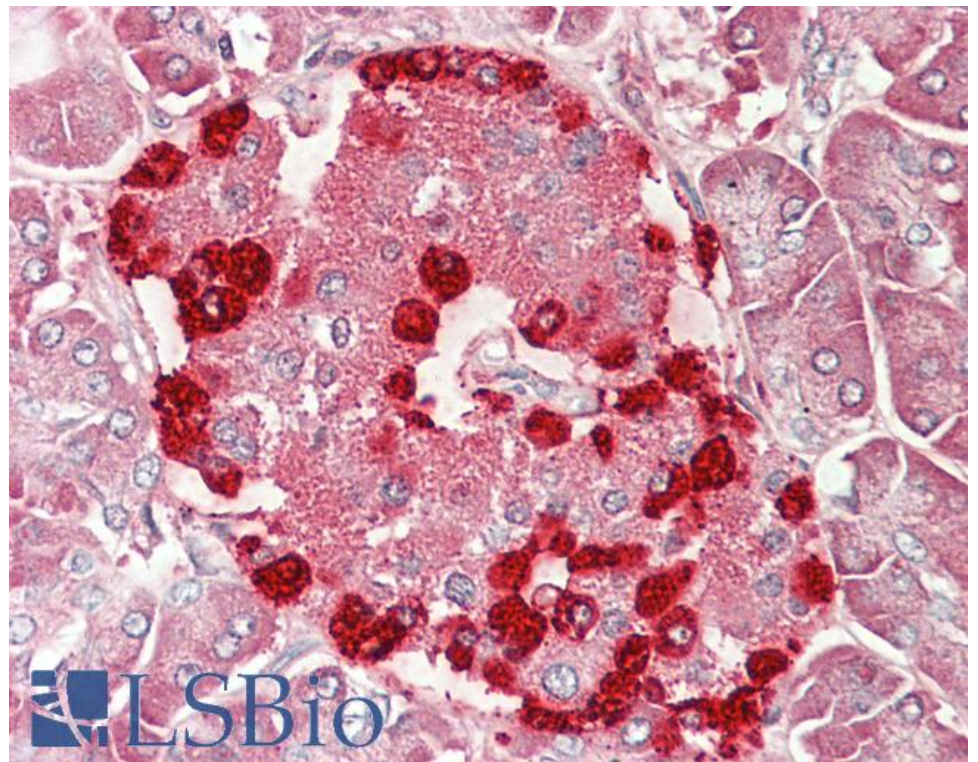
Species Reactivity

Tested: Human

Expected from sequence similarity: Human



EB11281 (0.3 μ g/ml) staining of Jurkat lysate (35 μ g protein in RIPA buffer). Detected by chemiluminescence.



EB11281 (5 μ g/ml) staining of paraffin embedded Human Pancreas. Steamed antigen retrieval with citrate buffer pH 6, AP-staining.