



## UK Office

### Everest Biotech Ltd

Cherwell Innovation Centre  
77 Heyford Park  
Upper Heyford  
Oxfordshire  
OX25 5HD  
UK

Enquiries:

[info@everestbiotech.com](mailto:info@everestbiotech.com)

Sales:

[sales@everestbiotech.com](mailto:sales@everestbiotech.com)

Tech support:

[support@everestbiotech.com](mailto:support@everestbiotech.com)

Tel: +44 (0)1869 238326

Fax: +44 (0)1869 238327

## US Office

### Everest Biotech c/o Abcore

405 Maple Street, Suite A106  
Ramona,  
CA 92065  
USA

Inquiries:

[info@everestbiotech.com](mailto:info@everestbiotech.com)

Sales:

[usasales@everestbiotech.com](mailto:usasales@everestbiotech.com)

Tech support:

[support@everestbiotech.com](mailto:support@everestbiotech.com)

Tel: 888-320-4628 (toll-free)

Fax: 888-841-9041

[www.everestbiotech.com](http://www.everestbiotech.com)

**Research Use Only. Not for  
diagnostic or therapeutic use.**

## EB11685 - Goat Anti-TUBB3 Antibody

Size: 100µg specific antibody in 200µl



### Target Protein

**Principal Names:** beta-4, CDCBM, CFEOM3A, class III beta-tubulin, OTTHUMP00000176846, TUBB3, TUBB4, tubulin beta-3 chain, tubulin beta-4 chain, tubulin beta-III, tubulin, beta 3

**Official Symbol:** TUBB3

**Accession Number(s):** NP\_006077.2

**Human GeneID(s):** [10381](#)

**Non-Human GeneID(s):** 22152 (mouse), 246118 (rat)

**Important Comments:** This antibody is expected to recognize isoform 1 (NP\_006077.2) only.

### Immunogen

Peptide with sequence C-DPSGNYVGDS, from the internal region (near N terminus) of the protein sequence according to NP\_006077.2.

Please note the [peptide](#) is available for sale.

### Purification and Storage

Purified from goat serum by ammonium sulphate precipitation followed by antigen affinity chromatography using the immunizing peptide.

Supplied at 0.5 mg/ml in Tris saline, 0.02% sodium azide, pH7.3 with 0.5% bovine serum albumin.

Aliquot and store at -20°C. Minimize freezing and thawing.

### Applications Tested

**Peptide ELISA:** antibody detection limit dilution 1:1000.

**Western blot:** Approx 52kDa band observed in lysates of cell line HepG2 (calculated MW of 50.4kDa according to NP\_006077.2). Recommended concentration: 1-3µg/ml.

### Species Reactivity

**Tested:** Human

**Expected from sequence similarity:** Human, Mouse, Rat, Pig, Cow

### Specific Reference

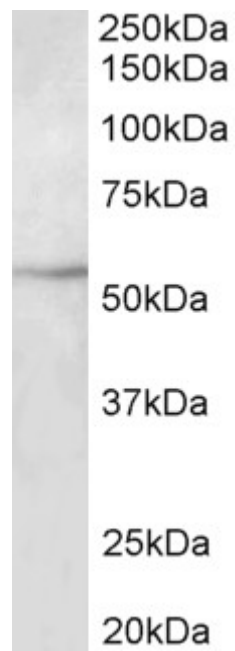
**This antibody has been successfully used in the following paper:**

Bismark Appiah et al.

DOT1L activity affects neural stem cell division mode and reduces differentiation and ASNS expression.

EMBO Rep. 2023 Aug; 24(8): e56233.

PMID: 37382163



EB11685 (2 $\mu$ g/ml) staining of HepG2 lysate (35 $\mu$ g protein in RIPA buffer). Primary incubation was 1 hour.  
Detected by chemiluminescence.