

## UK Office

### Everest Biotech Ltd

Cherwell Innovation Centre  
77 Heyford Park  
Upper Heyford  
Oxfordshire  
OX25 5HD  
UK

Enquiries:

[info@everestbiotech.com](mailto:info@everestbiotech.com)

Sales:

[sales@everestbiotech.com](mailto:sales@everestbiotech.com)

Tech support:

[support@everestbiotech.com](mailto:support@everestbiotech.com)

Tel: +44 (0)1869 238326

[www.everestbiotech.com](http://www.everestbiotech.com)

**Research Use Only. Not for  
diagnostic or therapeutic use.**

## EB08380 - Goat Anti-TUSC3 / N33 Antibody

Size: 100µg specific antibody in 200µl



### Target Protein

**Principal Names:** TUSC3, tumor suppressor candidate 3, D8S1992, MGC13453, N33, OST3A, Putative prostate cancer tumor suppressor

**Official Symbol:** TUSC3

**Accession Number(s):** NP\_006756.2; NP\_839952.1

**Human GeneID(s):** [7991](#)

**Non-Human GeneID(s):** 80286 (mouse), 290783 (rat)

**Important Comments:** This antibody is expected to recognise both reported isoforms (NP\_006756.2; NP\_839952.1).

### Immunogen

Peptide with sequence PQRQCSVCRQAN, from the internal region of the protein sequence according to NP\_006756.2; NP\_839952.1.

Please note the [peptide](#) is available for sale.

### Purification and Storage

Purified from goat serum by ammonium sulphate precipitation followed by antigen affinity chromatography using the immunizing peptide.

Supplied at 0.5 mg/ml in Tris saline, 0.02% sodium azide, pH7.3 with 0.5% bovine serum albumin.

Aliquot and store at -20°C. Minimize freezing and thawing.

### Applications Tested

**Peptide ELISA:** antibody detection limit dilution 1:1000.

**Western blot:** Approx 37kDa band observed in Human Liver and Lung lysates (calculated MW of 39.7kDa according to NP\_006756.2 and of 39.6 according to NP\_839952.1). An additional band of unknown identity was also consistently observed at 22kDa, which was successfully blocked by incubation with the immunising peptide. Recommended concentration: 1-3µg/ml. Primary incubation 1 hour at room temperature.

**IHC:** Paraffin embedded Human Prostate. Recommended concentration: 4-8µg/ml.

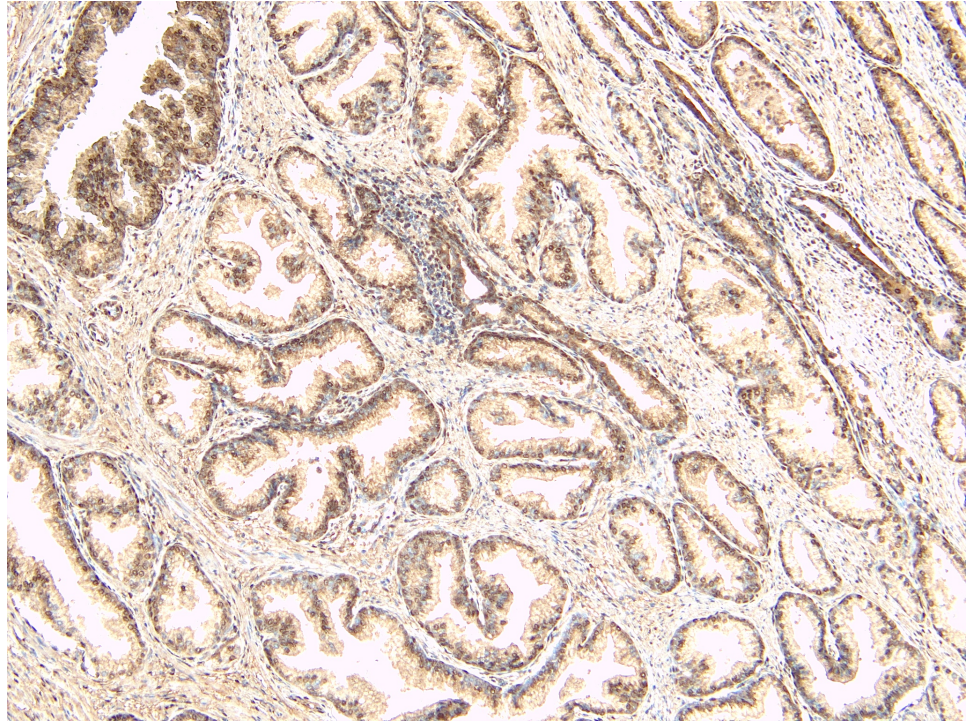
### Species Reactivity

**Tested:** Human

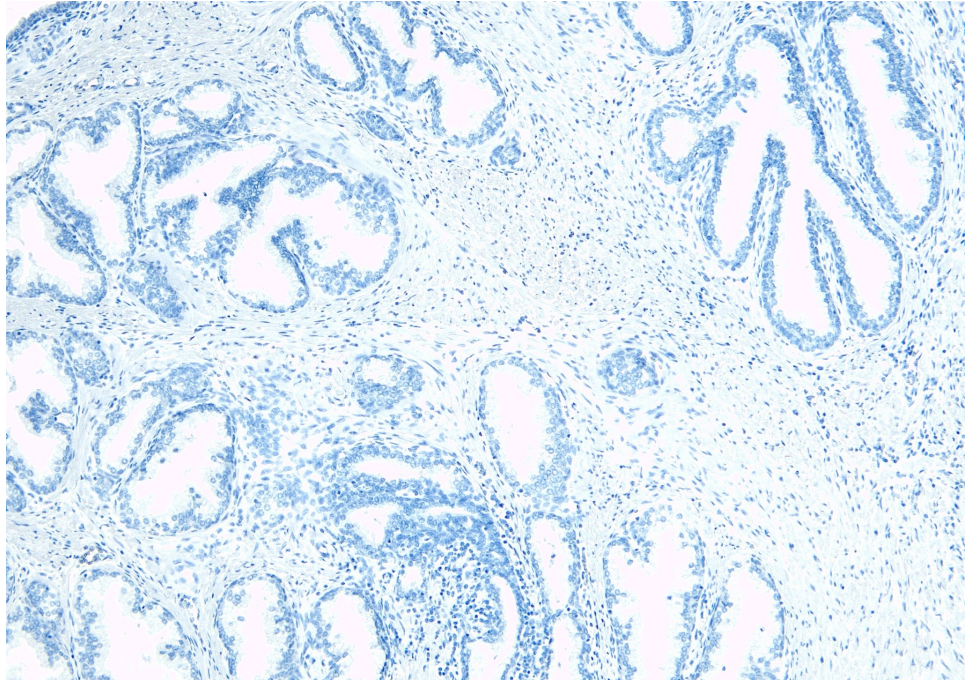
**Expected from sequence similarity:** Human, Mouse, Rat, Cow



EB08380 (1 $\mu$ g/ml) staining of Human Liver lysate (35 $\mu$ g protein in RIPA buffer). Detected by chemiluminescence.



EB08380 (8 $\mu$ g/ml) staining of paraffin embedded Human Prostate. Heat induced antigen retrieval with citrate buffer pH 6, HRP-staining.



EB08380 Negative Control showing staining of paraffin embedded Human Prostate, with no primary antibody.