



UK Office

Everest Biotech Ltd

Cherwell Innovation Centre
77 Heyford Park
Upper Heyford
Oxfordshire
OX25 5HD
UK

Enquiries:

info@everestbiotech.com

Sales:

sales@everestbiotech.com

Tech support:

support@everestbiotech.com

Tel: +44 (0)1869 238326

www.everestbiotech.com

**Research Use Only. Not for
diagnostic or therapeutic use.**

EB08275 - Goat Anti-TUSC4 / NPRL2 (aa 140 to 151) Antibody

Size: 100µg specific antibody in 200µl



Target Protein

Principal Names: TUSC4, NPRL2, tumor suppressor candidate 4, NPR2L, 2810446G01Rik, homologous to yeast nitrogen permease (candidate tumor suppressor)

Official Symbol: NPRL2

Accession Number(s): NP_006536.3

Human GeneID(s): [10641](#)

Immunogen

Peptide with sequence QYSNVYCPTPKV, from the internal region of the protein sequence according to NP_006536.3.

Please note the [peptide](#) is available for sale.

Purification and Storage

Purified from goat serum by ammonium sulphate precipitation followed by antigen affinity chromatography using the immunizing peptide.

Supplied at 0.5 mg/ml in Tris saline, 0.02% sodium azide, pH7.3 with 0.5% bovine serum albumin.

Aliquot and store at -20°C. Minimize freezing and thawing.

Applications Tested

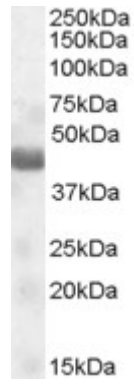
Peptide ELISA: antibody detection limit dilution 1:32000.

Western blot: Approx 45kDa band observed in Human Skeletal Muscle lysates (calculated MW of 43.7kDa according to NP_006536.3). Recommended concentration :0.1-0.3µg/ml.

Species Reactivity

Tested: Human

Expected from sequence similarity: Human, Mouse



EB08275 (0.1 μ g/ml) staining of Human Muscle lysate (35 μ g protein in RIPA buffer). Primary incubation was 1 hour. Detected by chemiluminescence.