



UK Office

Everest Biotech Ltd

Cherwell Innovation Centre
77 Heyford Park
Upper Heyford
Oxfordshire
OX25 5HD
UK

Enquiries:

info@everestbiotech.com

Sales:

sales@everestbiotech.com

Tech support:

support@everestbiotech.com

Tel: +44 (0)1869 238326

Fax: +44 (0)1869 238327

US Office

Everest Biotech c/o Abcore

405 Maple Street, Suite A106
Ramona,
CA 92065
USA

Inquiries:

info@everestbiotech.com

Sales:

usasales@everestbiotech.com

Tech support:

support@everestbiotech.com

Tel: 888-320-4628 (toll-free)

Fax: 888-841-9041

www.everestbiotech.com

**Research Use Only. Not for
diagnostic or therapeutic use.**

EB08161 - Goat Anti-U2AF1L4 Antibody

Size: 100µg specific antibody in 200µl



Target Protein

Principal Names: U2AF1L4, U2 small nuclear RNA auxiliary factor 1-like 4, FLJ35525, MGC33901, U2AF1-RS3, U2AF1L3, U2AF1L3V1, U2AF1RS3, U2af26, U2 small nuclear RNA auxiliary factor 1-like 3, U2(RNU2) small nuclear RNA auxiliary factor 1-like 3

Official Symbol: U2AF1L4

Accession Number(s): NP_001035515.1 ; NP_659424.2

Human GeneID(s): [199746](#)

Non-Human GeneID(s): 233073 (mouse), 361542 (rat)

Important Comments: This antibody is expected to recognise both reported isoforms (NP_001035515.1 and NP_659424.2). No cross-reactivity with U2AF1 expected.

Immunogen

Peptide with sequence C-EDGERAVAELSNR, from the internal region of the protein sequence according to NP_001035515.1 ; NP_659424.2.

Please note the [peptide](#) is available for sale.

Purification and Storage

Purified from goat serum by ammonium sulphate precipitation followed by antigen affinity chromatography using the immunizing peptide.

Supplied at 0.5 mg/ml in Tris saline, 0.02% sodium azide, pH7.3 with 0.5% bovine serum albumin.

Aliquot and store at -20°C. Minimize freezing and thawing.

Applications Tested

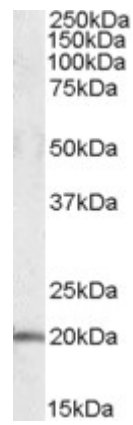
Peptide ELISA: antibody detection limit dilution 1:32000.

Western blot: Approx. 20kDa band observed in Human Brain (Cerebellum) and Lung lysates (calculated MW of 21.3kDa according to NP_001035515.1). Recommended concentration: 0.1-0.3µg/ml.

Species Reactivity

Tested: Human

Expected from sequence similarity: Human, Mouse, Rat, Dog



EB08161 (0.1µg/ml) staining of Human Cerebellum lysate (35µg protein in RIPA buffer). Primary incubation was 1 hour. Detected by chemiluminescence.