



## UK Office

### Everest Biotech Ltd

Cherwell Innovation Centre  
77 Heyford Park  
Upper Heyford  
Oxfordshire  
OX25 5HD  
UK

Enquiries:

[info@everestbiotech.com](mailto:info@everestbiotech.com)

Sales:

[sales@everestbiotech.com](mailto:sales@everestbiotech.com)

Tech support:

[support@everestbiotech.com](mailto:support@everestbiotech.com)

Tel: +44 (0)1869 238326

Fax: +44 (0)1869 238327

## US Office

### Everest Biotech c/o Abcore

405 Maple Street, Suite A106  
Ramona,  
CA 92065  
USA

Inquiries:

[info@everestbiotech.com](mailto:info@everestbiotech.com)

Sales:

[usasales@everestbiotech.com](mailto:usasales@everestbiotech.com)

Tech support:

[support@everestbiotech.com](mailto:support@everestbiotech.com)

Tel: 888-320-4628 (toll-free)

Fax: 888-841-9041

[www.everestbiotech.com](http://www.everestbiotech.com)

**Research Use Only. Not for  
diagnostic or therapeutic use.**

## EB05770 - Goat Anti-UBE2L3 Antibody

Size: 100µg specific antibody in 200µl



## Target Protein

**Principal Names:** UBE2L3, ubiquitin-conjugating enzyme E2L 3, UBCH7, E2-F1, L-UBC, UbcM4, ubiquitin carrier protein, ubiquitin-conjugating enzyme UBCH7, ubiquitin-protein ligase

**Official Symbol:** UBE2L3

**Accession Number(s):** NP\_003338.1

**Human GeneID(s):** [7332](#)

**Non-Human GeneID(s):** 22195 (mouse)

## Immunogen

Peptide with sequence C-EFTKKYGEKRPVD, from the C Terminus of the protein sequence according to NP\_003338.1.

Please note the [peptide](#) is available for sale.

## Purification and Storage

Purified from goat serum by ammonium sulphate precipitation followed by antigen affinity chromatography using the immunizing peptide.

Supplied at 0.5 mg/ml in Tris saline, 0.02% sodium azide, pH7.3 with 0.5% bovine serum albumin.

Aliquot and store at -20°C. Minimize freezing and thawing.

## Applications Tested

**Peptide ELISA:** antibody detection limit dilution 1:128000.

**Western blot:** Approx 18kDa band observed in lysates of cell lines HeLa HEK293, HepG2 and Jurkat and also in lysates of Human, Mouse and Rat Heart, Skeletal Muscle and Testis and of Pig Heart (calculated MW of 17.9kDa according to Human NP\_003338.1 and Mouse NP\_033482.1). Recommended concentration: 1-3µg/ml.

**Immunofluorescence:** Strong expression of the protein seen in the cytoplasm. Dividing cells appear to show enhanced expression. Recommended concentration: 5µg/ml.

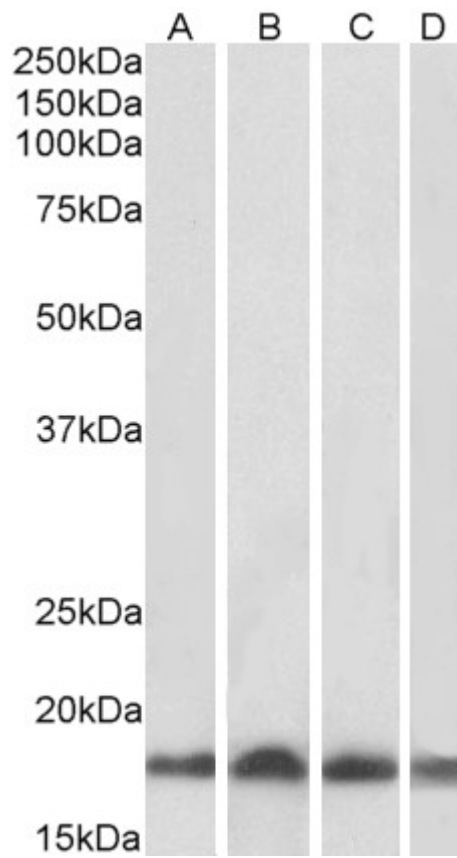
## Species Reactivity

**Tested:** Human, Mouse, Rat, Pig

**Expected from sequence similarity:** Human, Mouse, Rat, Pig, Cow



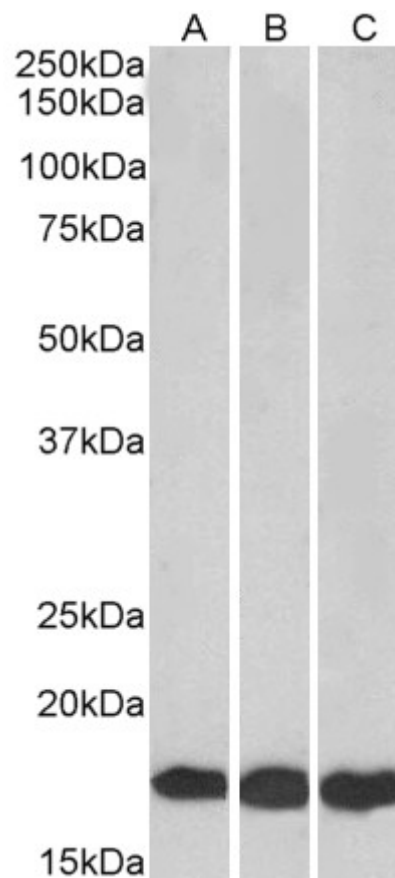
EB05770 staining (0.5 $\mu$ g/ml) of HeLa lysate (RIPA buffer, 35 $\mu$ g total protein per lane). Primary incubated for 1 hour. Detected by western blot using chemiluminescence.



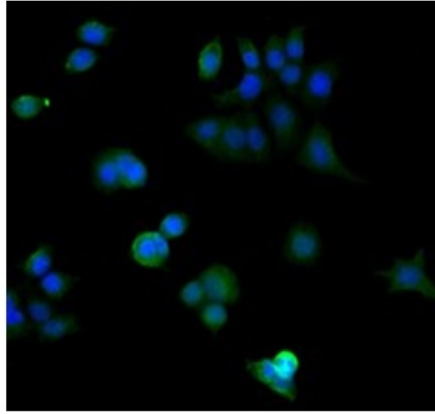
EB05770 (0.01 $\mu$ g/ml) staining of Human (A), Mouse (B), Rat (C) and Pig (D) Heart lysate (35 $\mu$ g protein in RIPA buffer). Primary incubation was 1 hour. Detected by chemiluminescence.



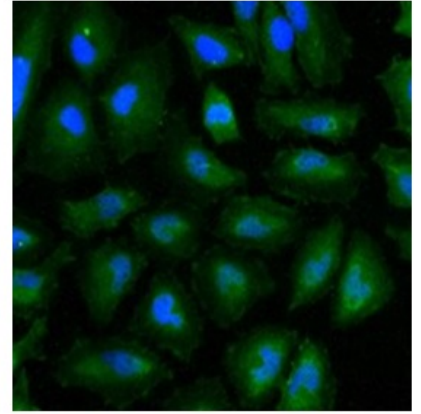
EB05770 (0.03 $\mu$ g/ml) staining of Human (A), Mouse (B) and Rat (C) Skeletal Muscle lysates (35 $\mu$ g protein in RIPA buffer). Primary incubation was 1 hour. Detected by chemiluminescence.



EB05770 (0.01 $\mu$ g/ml) staining of HEK293 (A), HepG2 (B) and Jurkat (C) lysates (35 $\mu$ g protein in RIPA buffer). Primary incubation was 1 hour. Detected by chemiluminescence.



A



B

Immunofluorescence staining of MCF7 (A) and HeLa (B) cells with 5ug/ml EB05770 antibody. Detected with Rabbit anti-goat IgG-Alexafluor488 antibody at 1:1000. Nuclei Counterstained with DAPI.