



International Office

Everest Biotech Ltd

Vector Laboratories, Inc.
6737 Mowry Ave
Newark, CA 94560
United States

Customer Service:

customerservice@vectorlabs.com

Technical Service:

technical@vectorlabs.com

Tel: +1 (800) 227-6666

www.everestbiotech.com

**Research Use Only. Not for
diagnostic or therapeutic use.**

EB11600 - Goat Anti-Ubinuclein 1 / ubinuclein 2 Antibody

Size: 100µg specific antibody in 200µl



Target Protein

Principal Names: HIRA-binding protein, OTTHUMP00000159925, OTTHUMP00000159926, ubinuclein 1, ubinuclein-1, ubiquitously expressed nuclear protein, UBN1, VT, VT4

Official Symbol: UBN1

Accession Number(s): NP_058632.2

Human GeneID(s): [29855](#)

Non-Human GeneID(s): 170644 (mouse), 302935 (rat)

Important Comments: Reported variants represent identical protein: NP_058632.2, NP_001072982.1.

Immunogen

Peptide with sequence C-DNSEAYDELVPASLT, from the internal region of the protein sequence according to NP_058632.2.

Please note the [peptide](#) is available for sale.

Purification and Storage

Purified from goat serum by ammonium sulphate precipitation followed by antigen affinity chromatography using the immunizing peptide.

Supplied at 0.5 mg/ml in Tris saline, 0.02% sodium azide, pH7.3 with 0.5% bovine serum albumin.

Aliquot and store at -20°C. Minimize freezing and thawing.

Applications Tested

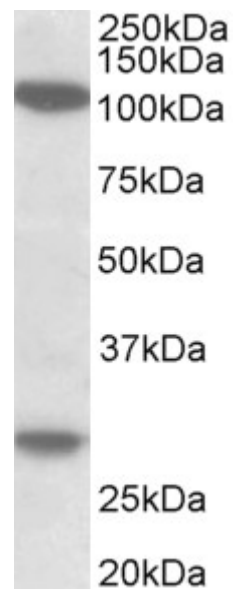
Peptide ELISA: antibody detection limit dilution 1:128000.

Western blot: Approx 120kDa band observed in lysates of cell line MOLT4 (calculated MW of 122kDa according to NP_058632.2). Recommended concentration: 1-3µg/ml. An additional band of unknown identity was also consistently observed at 28kDa. This band was successfully blocked by incubation with the immunizing peptide. We would appreciate any feedback from people in the field - have any such results been reported with other antibodies/lysates? Have any further splice variants/modified forms been reported?

Species Reactivity

Tested: Human

Expected from sequence similarity: Human, Mouse, Rat, Dog, Pig, Cow, Zebrafish



EB11600 (1 μ g/ml) staining of MOLT4 lysate (35 μ g protein in RIPA buffer). Primary incubation was 1 hour.
Detected by chemiluminescence.