



International Office

Everest Biotech Ltd

Vector Laboratories, Inc.
6737 Mowry Ave
Newark, CA 94560
United States

Customer Service:

customerservice@vectorlabs.com

Technical Service:

technical@vectorlabs.com

Tel: +1 (800) 227-6666

www.everestbiotech.com

**Research Use Only. Not for
diagnostic or therapeutic use.**

EB09790 - Goat Anti-UBP1 Antibody

Size: 100µg specific antibody in 200µl



Target Protein

Principal Names: DKFZp686L1745, LBP1A, LBP-1a, LBP1B, LBP-1B, transcription factor LBP-1, upstream binding protein 1 (LBP-1a), UBP1

Official Symbol: UBP1

Accession Number(s): NP_055332.3; NP_001121632.1

Human GeneID(s): [7342](#)

Non-Human GeneID(s): 22221 (mouse), 301038 (rat)

Important Comments: Reported variants represent identical protein: NP_001121633.1, NP_055332.3.

Immunogen

Peptide with sequence C-PNHQGDGASQTSGE, from the internal region of the protein sequence according to NP_055332.3; NP_001121632.1.

Please note the [peptide](#) is available for sale.

Purification and Storage

Purified from goat serum by ammonium sulphate precipitation followed by antigen affinity chromatography using the immunizing peptide.

Supplied at 0.5 mg/ml in Tris saline, 0.02% sodium azide, pH7.3 with 0.5% bovine serum albumin.

Aliquot and store at -20°C. Minimize freezing and thawing.

Applications Tested

Peptide ELISA: antibody detection limit dilution 1:2000.

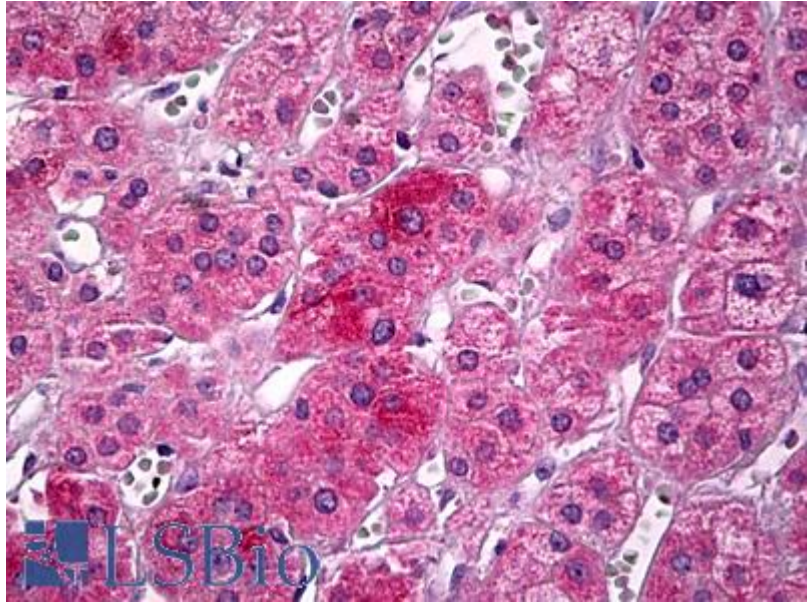
Western blot: Preliminary experiments in Human Kidney, Human Adrenal gland, HeLa and HepG2 lysates gave no specific signal but low background (at antibody concentration up to 2µg/ml).

IHC: Paraffin embedded Human Adrenal Medulla. Recommended concentration: 10µg/ml.

Species Reactivity

Tested: Human

Expected from sequence similarity: Human, Mouse, Rat, Dog



EB09790 (10µg/ml) staining of paraffin embedded Human Adrenal Medulla. Steamed antigen retrieval with citrate buffer Ph 6, AP-staining.